

## ***MONEY IN MOTION***

May 22, 2023

### **Semiconductors**

- While there are many Semiconductor and Semiconductor Equipment stocks, just a handful of names dominate, as all will know. The market capitalization of the top 2 constituents in the Russell 3000 Semiconductor Index represent 47% of the total value of all publicly traded Semis, while the top 5 represent 62%, and the top 10 stocks represent 82%.
- Given that the biggest Semi of all, NVIDIA, reports earnings this week, and given that NVIDIA represents 32% of the \$2.42 trillion total value of all publicly traded Semiconductors, we thought we'd focus on Semiconductors as a group.
- Interestingly, while just last week the S&P 500 Information Technology Sector recouped all its relative losses to the S&P 500 Index associated with the Dot-com peak and bust, Semis, as a group, as measured by the Philadelphia Semiconductor Index, have a long way to also get back to even with the S&P 500 Index.
- Our hunch here is to be overweight Semiconductors (versus the Technology Sector).
- As for NVIDIA itself – we haven't a clue. It's steep and uncorrected, yes, but everyone knows this. And everyone also knows that while stocks in steep, uncorrected uptrends eventually succumb to profit taking and/or shorting and the selling pressure associated therewith, they often get much steeper and persist much longer than anyone can foresee.
- We ourselves own Puts going into NVIDIA's Wednesday earnings release, but that really has more to do with "placing a bet" for a trade, than anything else. For those not wanting to be directional into the print, but wanting to be involved for a trade, buying a straddle, of course, is the way to go.

Trade well,

-Carter

Carter Braxton Worth

Kimberly Simon



## Russell 3000 Semiconductor Index

	<u>Russell 3000 Index</u>
Total Number of Semiconductor & Semiconductor Equipment Stocks	60
Total Market Captilization:	\$2.42 Trillion
Average Market Cap of the 60 stocks	\$40.40 Billion
Median Market Cap of the 60 stocks	\$4.92 Billion

## Russell 3000 Semiconductor Index

	<u>Russell 3000 Index</u>
Total Number of Semiconductor & Semiconductor Equipment Stocks	60
Total Market Captilization:	\$2.42 Trillion
Average Market Cap of the 60 stocks	\$40.40 Billion
Median Market Cap of the 60 stocks	\$4.92 Billion

## Top 10 Constituents

Top 10 Stocks	Market Cap (billions)	Weight in Russell 3000 Semiconductor Index	Weight	
1 NVIDIA	772.22	31.9%		
2 Broadcom	284.45	11.7%	<b>43.6%</b>	Top 2
3 Advanced Micro Devices	170.41	7.0%		
4 Texas Instruments	154.40	6.4%		
5 Intel	124.84	5.2%	<b>62.2%</b>	Top 5
6 QUALCOMM	117.93	4.9%		
7 Applied Materials	107.29	4.4%		
8 Analog Devices	96.38	4.0%		
9 Lam Research	79.11	3.3%		
10 Micron	74.61	<u>3.1%</u>	<b>81.8%</b>	Top 10
	\$1.98 Trillion	81.8%		

## Comparative 2-Year Percent Change Chart

Philadelphia Stock Exchange Semiconductor Index

Russell 3000 Index Semiconductors Index

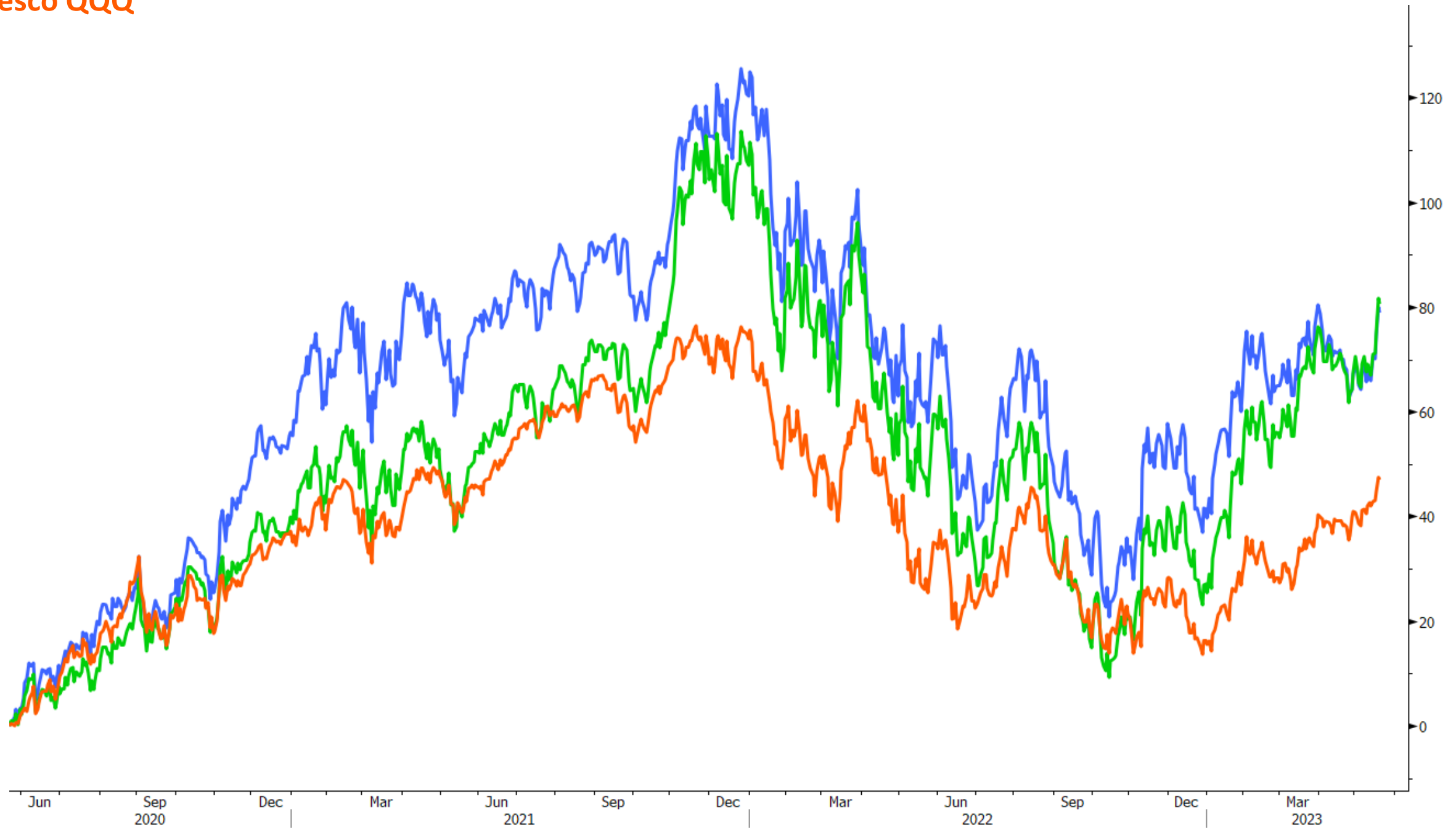


## Comparative 2-Year Percent Change Chart

Philadelphia Stock Exchange Semiconductor Index

Russell 3000 Index Semiconductors Index

Invesco QQQ



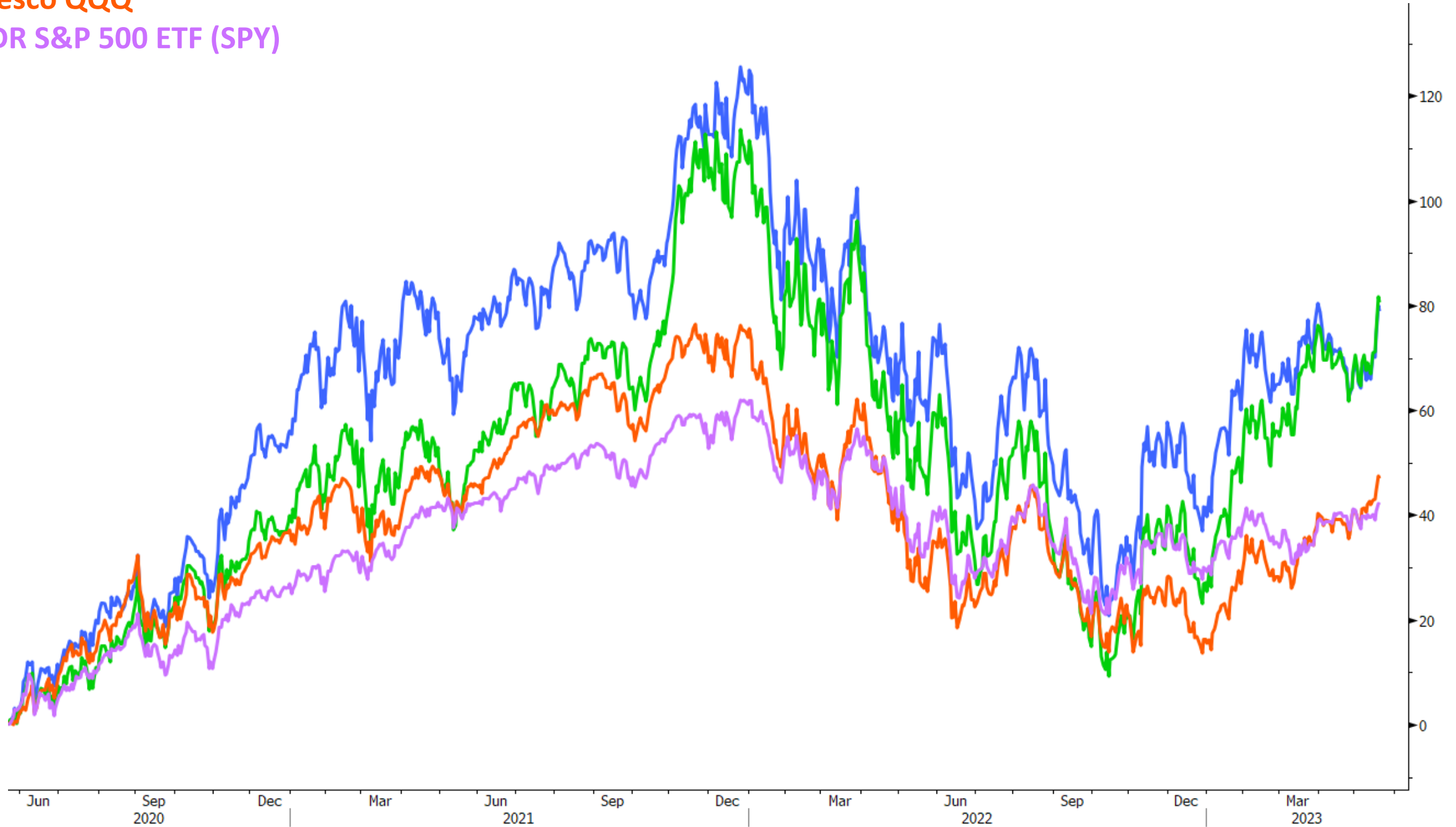
## Comparative 2-Year Percent Change Chart

Philadelphia Stock Exchange Semiconductor Index

Russell 3000 Index Semiconductors Index

Invesco QQQ

SPDR S&P 500 ETF (SPY)



## Comparative 2-Year Percent Change Chart

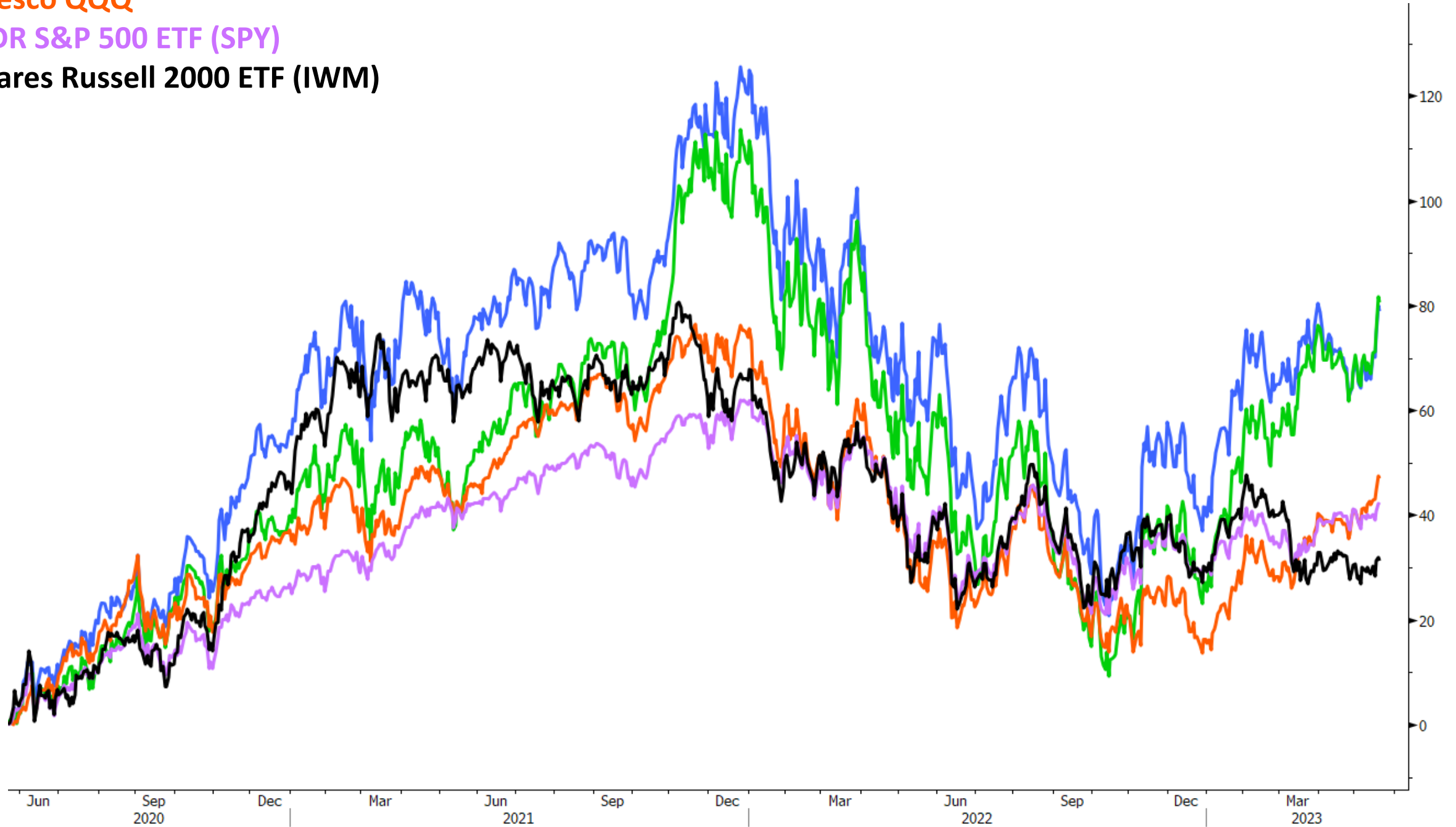
Philadelphia Stock Exchange Semiconductor Index

Russell 3000 Index Semiconductors Index

Invesco QQQ

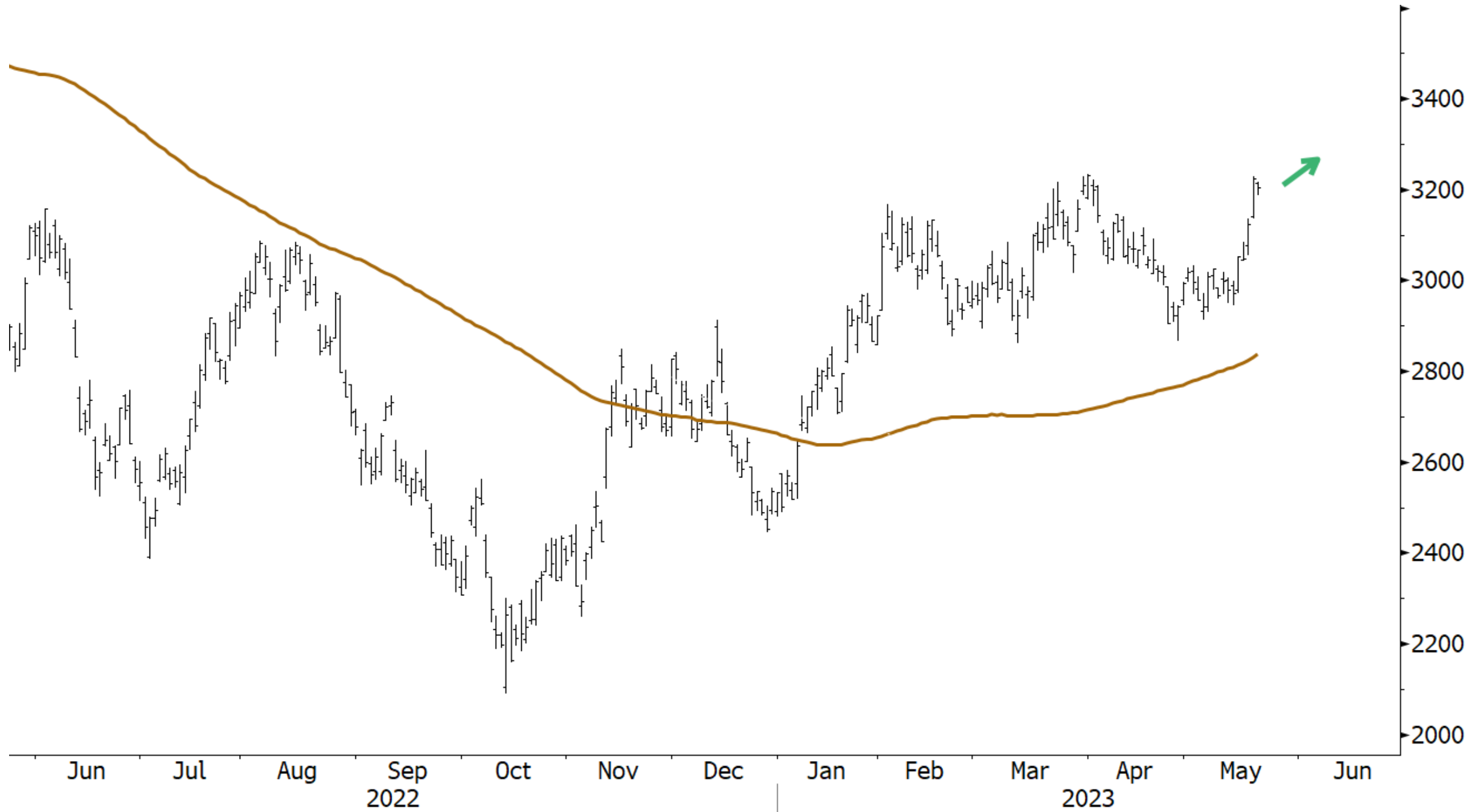
SPDR S&P 500 ETF (SPY)

iShares Russell 2000 ETF (IWM)





## Philadelphia Stock Exchange Semiconductor Index (SOX) with 150-day moving average





## Philadelphia Stock Exchange Semiconductor Index (SOX) with trend line



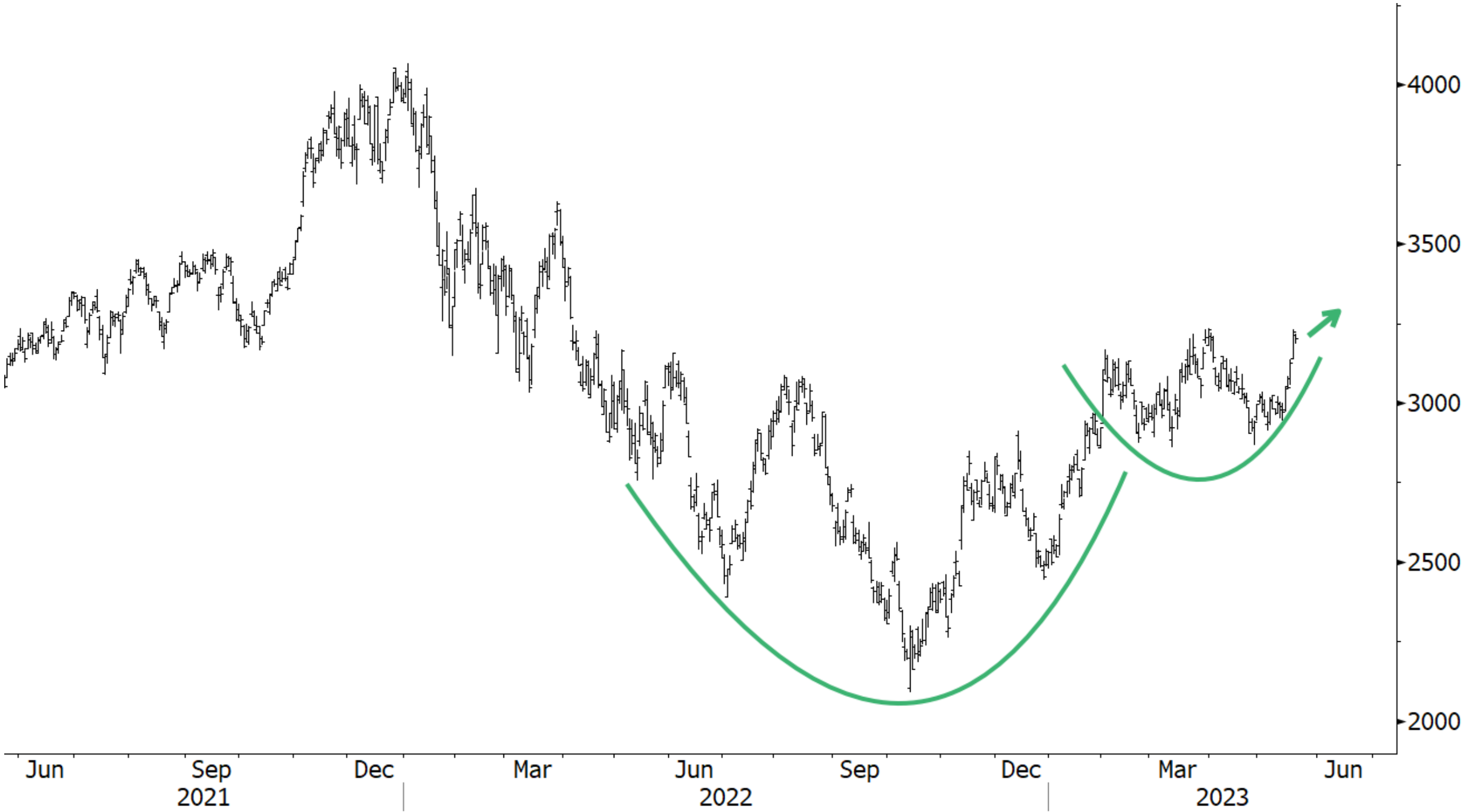
## Philadelphia Stock Exchange Semiconductor Index (SOX) with trend line



## Philadelphia Stock Exchange Semiconductor Index (SOX) with trend lines



## Philadelphia Stock Exchange Semiconductor Index (SOX) another way to “draw the lines”



## Philadelphia Stock Exchange Semiconductor Index (SOX)

still another way to “draw the lines”

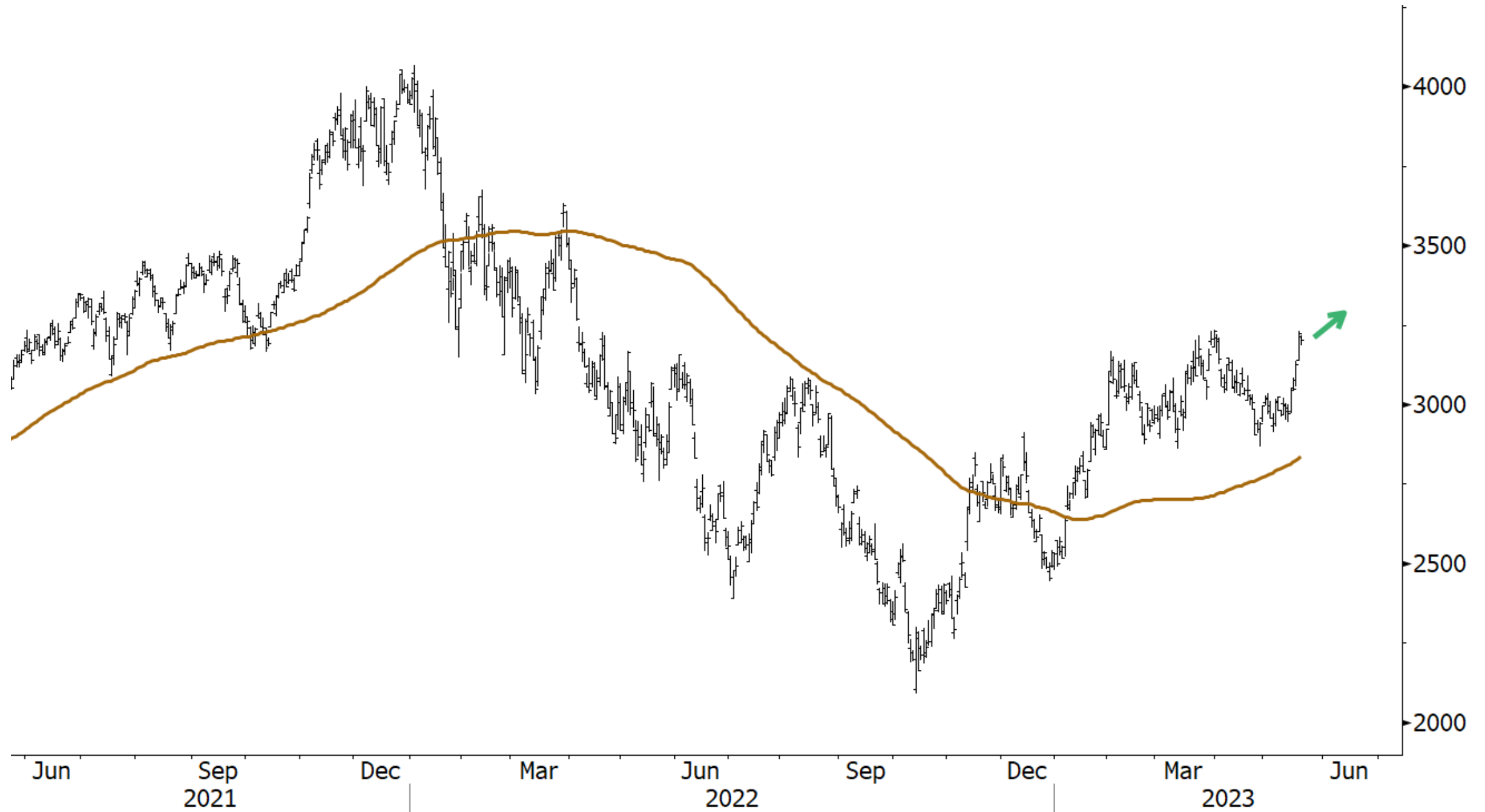


## Philadelphia Stock Exchange Semiconductor Index (SOX)

all the lines and the 150-day moving average

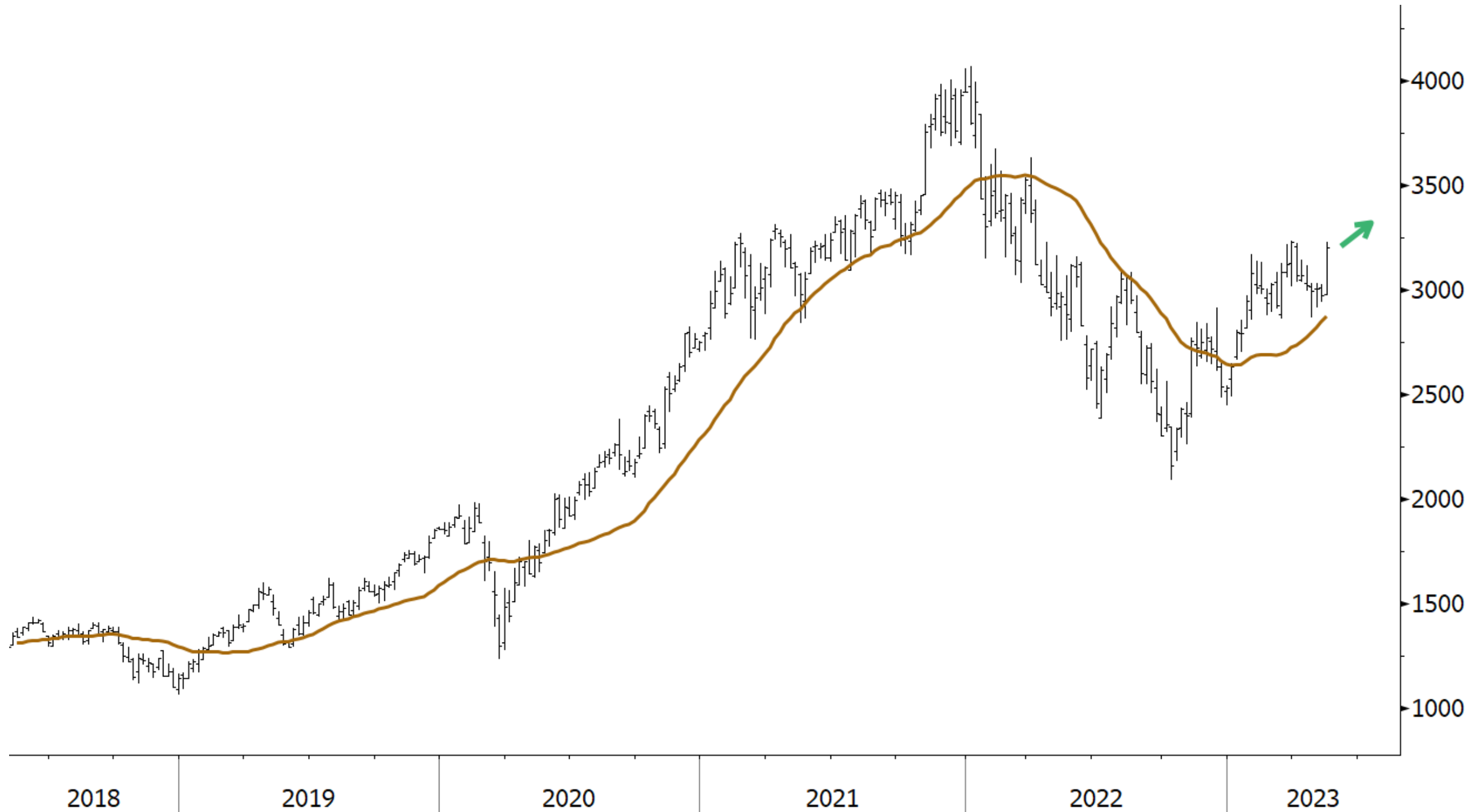


## Philadelphia Stock Exchange Semiconductor Index (SOX) with 150-day moving average

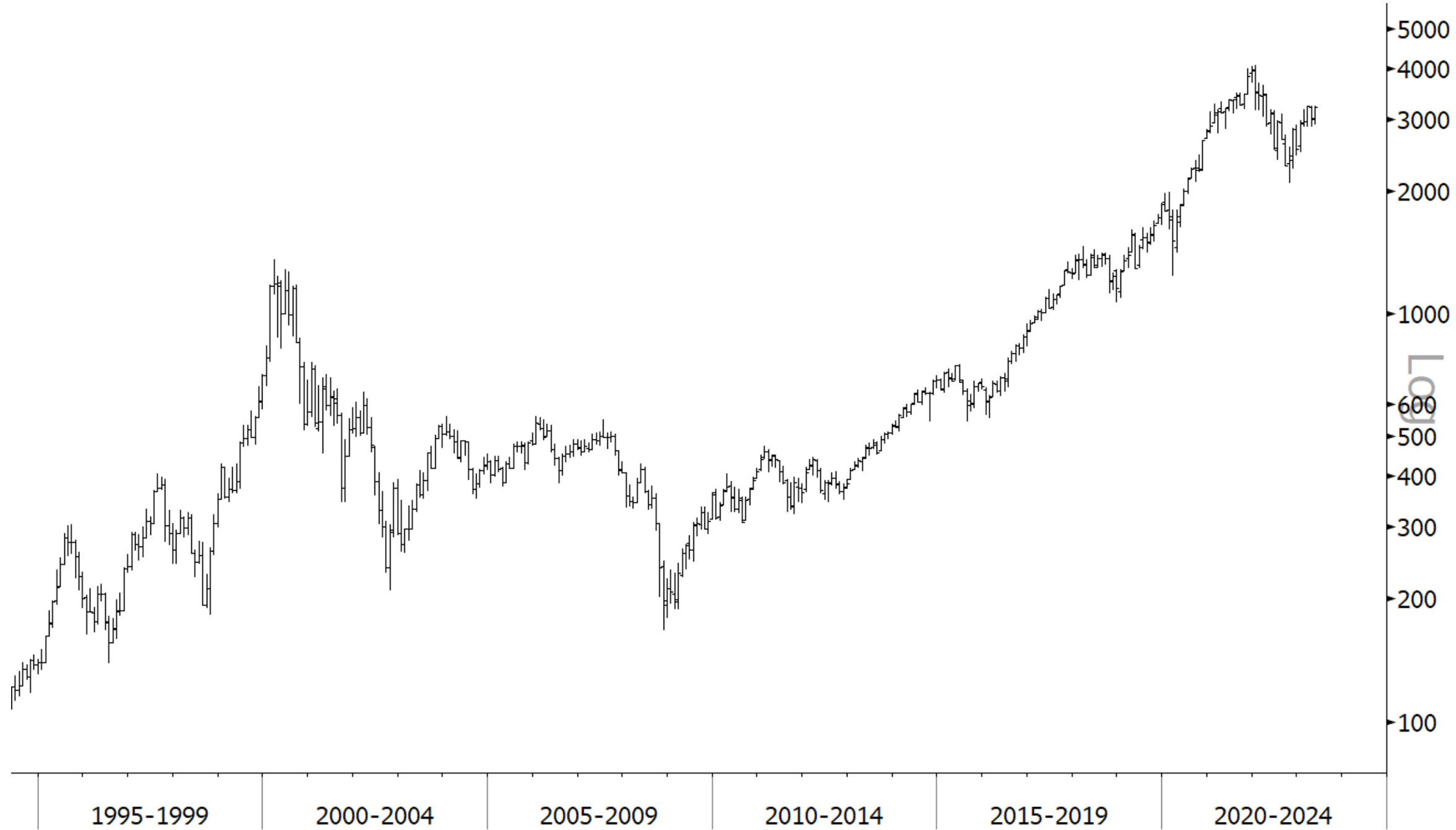




## Philadelphia Stock Exchange Semiconductor Index (SOX) with 150-day moving average



## Philadelphia Stock Exchange Semiconductor Index (SOX) ALL-DATA CHART 1 of 3



## Philadelphia Stock Exchange Semiconductor Index (SOX) ALL-DATA CHART 2 of 3



## Philadelphia Stock Exchange Semiconductor Index (SOX)

ALL-DATA CHART 3 of 3



## Ratio Chart: SOX/SPX

Depicting the SOX's relative performance to the S&P 500 Index



## Ratio Chart: SOX/SPX

Depicting the SOX's relative performance to the S&P 500 Index  
**still lagging behind the SPX since the Dot-com peak**



## Ratio Chart: SOX/S&P 500 Technology Sector

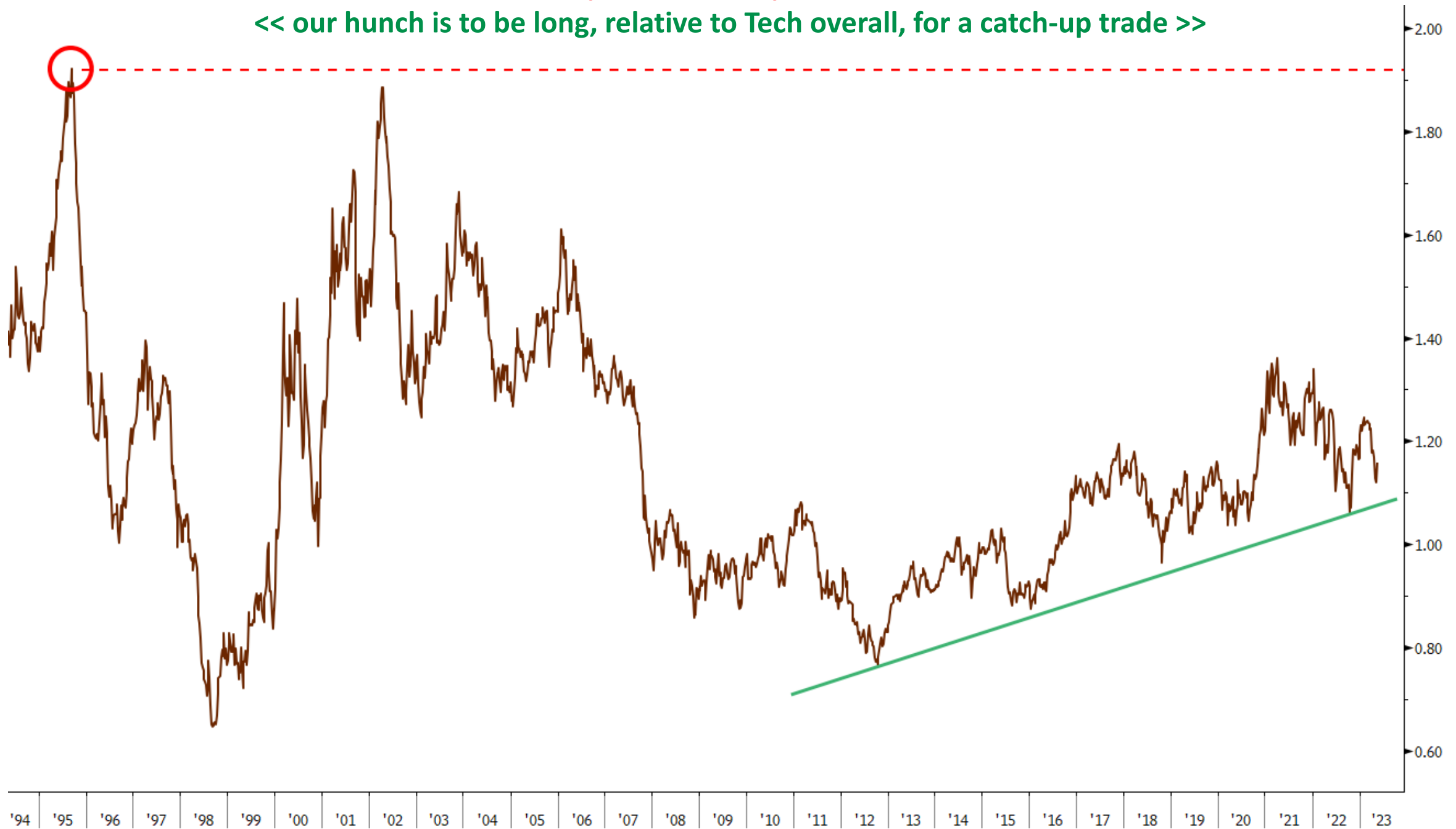
Depicting the SOX's relative performance to Technology stocks overall  
**relative performance peaked in 1995**





## Ratio Chart: SOX/S&P 500 Technology Sector

Depicting the SOX's relative performance to Technology stocks overall  
**relative performance peaked in 1995**  
<< our hunch is to be long, relative to Tech overall, for a catch-up trade >>



## Russell 3000 Semiconductors Index

<u>Ticker</u>	<u>Company</u>	<u>Price</u>	<u>Mkt Cap</u> (billions)	<u>Ticker</u>	<u>Company</u>	<u>Price</u>	<u>Mkt Cap</u> (billions)
NVDA	NVIDIA Corporation	312.64	772.22	ONTO	Onto Innovation, Inc.	100.42	4.92
AVGO	Broadcom Inc.	682.25	284.45	ACLS	Axcelis Technologies, Inc.	141.59	4.63
AMD	Advanced Micro Devices, Inc.	105.82	170.41	SLAB	Silicon Laboratories Inc.	139.91	4.48
TXN	Texas Instruments Incorporated	170.11	154.40	DIOD	Diodes Incorporated	95.31	4.36
INTC	Intel Corporation	29.93	124.84	CRUS	Cirrus Logic, Inc.	78.11	4.32
QCOM	QUALCOMM Incorporated	105.86	117.93	MTSI	MACOM Technology Solutions	59.18	4.20
AMAT	Applied Materials, Inc.	126.95	107.29	SYNA	Synaptics Incorporated	82.04	3.24
ADI	Analog Devices, Inc.	190.53	96.38	AMBA	Ambarella, Inc.	72.38	2.87
LRCX	Lam Research Corporation	588.86	79.11	KLIC	Kulicke & Soffa Industries, Inc.	50.63	2.87
MU	Micron Technology, Inc.	68.17	74.61	PI	Impinj, Inc.	96.81	2.58
KLAC	KLA Corporation	423.64	58.12	FORM	FormFactor, Inc.	30.56	2.36
MCHP	Microchip Technology Incorporated	77.87	42.66	MXL	MaxLinear, Inc.	28.56	2.28
MRVL	Marvell Technology, Inc.	45.46	38.96	SITM	SiTime Corporation	94.94	2.08
ON	ON Semiconductor Corporation	84.36	36.43	COHU	Cohu, Inc.	37.04	1.76
GFS	GlobalFoundries Inc.	56.97	31.21	CRDO	Credo Technology Group Holding	10.2	1.52
ENPH	Enphase Energy, Inc.	162.37	22.25	PDFS	PDF Solutions, Inc.	39.69	1.50
FSLR	First Solar, Inc.	203.53	21.74	INDI	indie Semiconductor, Inc. Class A	8.86	1.44
MPWR	Monolithic Power Systems, Inc.	432.02	20.49	SMTC	Semtech Corporation	21.21	1.36
SWKS	Skyworks Solutions, Inc.	101.66	16.18	UCTT	Ultra Clean Holdings, Inc.	29.9	1.34
TER	Teradyne, Inc.	97.1	15.05	VECO	Veeco Instruments Inc.	22.82	1.18
ENTG	Entegris, Inc.	96.78	14.49	PLAB	Photronics, Inc.	17.37	1.09
LSCC	Lattice Semiconductor Corporation	83.37	11.48	SGH	SMART Global Holdings, Inc.	19.93	0.98
QRVO	Qorvo, Inc.	95.04	9.49	ICHR	Ichor Holdings, Ltd.	30.85	0.90
ALGM	Allegro MicroSystems, Inc.	38.96	7.46	AOSL	Alpha and Omega Semiconductor	27.15	0.75
OLED	Universal Display Corporation	150.49	7.12	ACMR	ACM Research, Inc. Class A	9.73	0.58
RMBS	Rambus Inc.	59.47	6.47	CEVA	CEVA, Inc.	21.79	0.51
MKSI	MKS Instruments, Inc.	87.6	5.85	SKYT	SkyWater Technology Inc	10.26	0.46
AMKR	Amkor Technology, Inc.	22.82	5.61	TGAN	Transphorm Inc	3.84	0.23
WOLF	Wolfspeed Inc	44.03	5.48	ATOM	Atomera Incorporated	8.91	0.22
POWI	Power Integrations, Inc.	85.94	4.93	AXTI	AXT, Inc.	3.4	0.15





Worth Charting LLC (“Worth”) is a provider of financial publications of general circulation offering impersonal advice, not tailored to individual needs of a specific client or group. Reports are distributed for general informational and educational purposes only and is not intended to constitute legal, tax, accounting or investment advice. Worth is an independent research company and is not a registered investment adviser and is not acting as a broker dealer under any federal or state securities laws. Worth does not act as a fiduciary or an investment adviser. Comments or statements made herein do not constitute investment advice. Views, opinions and judgments expressed are of Worth.

The analyses and observations contained in this report (the “Report”) are statements of opinion as of the date they are expressed and not statements of fact or recommendations to purchase, hold, or sell any securities or make any investment decisions. Recipients of the Report should not rely on any of it in making any investment decision. You should obtain independent investment advice before buying or selling any security discussed in the Report. [Worth and/or its employees may hold positions in or purchase or sell such securities contrary to views expressed in the Report.] Worth does not guarantee the accuracy, adequacy, completeness or availability of any information contained herein and is not responsible for any errors or omissions or for results obtained from the use of such information. The Report does not take into account the investment objectives, financial situation, restrictions, particular needs or financial, legal, or tax situation of any particular person and should not be viewed as addressing the recipients’ particular investment needs. Opinions and analyses offered in the Report does not address the suitability of any security. The Report is not an offer or solicitation for the purchase or sale of any security, investment, or other product and should not be construed as such. Investing in securities and other financial products entails certain risks, including the possible loss of the entire principal amount invested. You should obtain advice from your tax, financial, legal, and other advisors and only make investment decisions on the basis of your own objectives, experience, and resources.

Information contained herein is current as of the date appearing herein and has been obtained from sources believed to be reliable, but accuracy and completeness are not guaranteed and should not be relied upon as such. Worth does not perform an audit and undertakes no duty of due diligence or independent verification of any information it receives. Worth has no duty to update the information contained herein, and the opinions, estimates, projections, assessments and other views expressed in the Report may change without notice due to many factors including but not limited to: fluctuating market conditions and economic factors. The Report is based on a number of assumptions. Worth makes no representations as to the reasonableness of such assumptions or the likelihood that such assumptions will coincide with actual events and this information should not be relied upon for that purpose. Changes in such assumptions could produce materially different results. Past performance is not a guarantee or indication of future results, and no representation or warranty, express or implied, is made regarding future performance of any security mentioned in this publication. Worth accepts no liability for any loss (whether direct, indirect or consequential) occasioned to any person acting or refraining from action as a result of any material contained in or derived from this publication, except to the extent (but only to the extent) that such liability may not be waived, modified or limited under applicable law.

All materials are disseminated and available to all subscribers simultaneously through electronic publication via email and to our internal client website. The Report is licensed for use by authorized subscribers, and may not be reproduced, distributed, forwarded, posted, published, transmitted, uploaded or otherwise made available to others for commercial purposes without written authorization from Worth.