

## ***MONEY IN MOTION***

September 19, 2022

### **Stocks With Immediate Breakdown Risk (opportunity)**

- The stock market doesn't go up or down, as all will know; individual stocks move, and the market moves concomitantly. Said differently, risk capital pursues perceived opportunity in the shares of individual companies, buying and selling, minute to minute, day to day, adding to longs, reducing longs, shorting and covering shorts, and the effect on "aggregates" (on indices) is straight forward and immediate.
- By definition, therefore, the best method for determining whether an index is likely to advance or decline is to try and figure out the prospective movement of individual stocks composing the index in question.
- "The parts compose the whole" (the 20 swimmers compose the swim team).  
"The whole comprises the parts" (the swim team comprises 20 swimmers).
- This report singles out stocks judged most likely to break lower in the day/days ahead: stock hovering ominously at or just above well-defined intermediate lows and 52-week lows, exhibiting bearish price-volume correlation and poor relative strength.
- Because there are so very many stocks in this position (so many parts), the inference can be made – and we are making it – that the market (whole) is headed immediately lower. Indeed, a real plunge – a crash of sorts – is likely, we believe.

Trade well,

-Carter

Carter Braxton Worth

Kimberly Simon

## MONEY IN MOTION

# Part 1 of 3:

A stock hovering ominously at or just above well-defined intermediate lows (and 52-week lows), exhibiting bearish price-volume correlation and poor relative strength is characterized in these pages as being at a *“Vulnerable-Weak”* Sell Juncture.

As long-time readers will know, a stock in this position represents an excellent short-sale candidate.

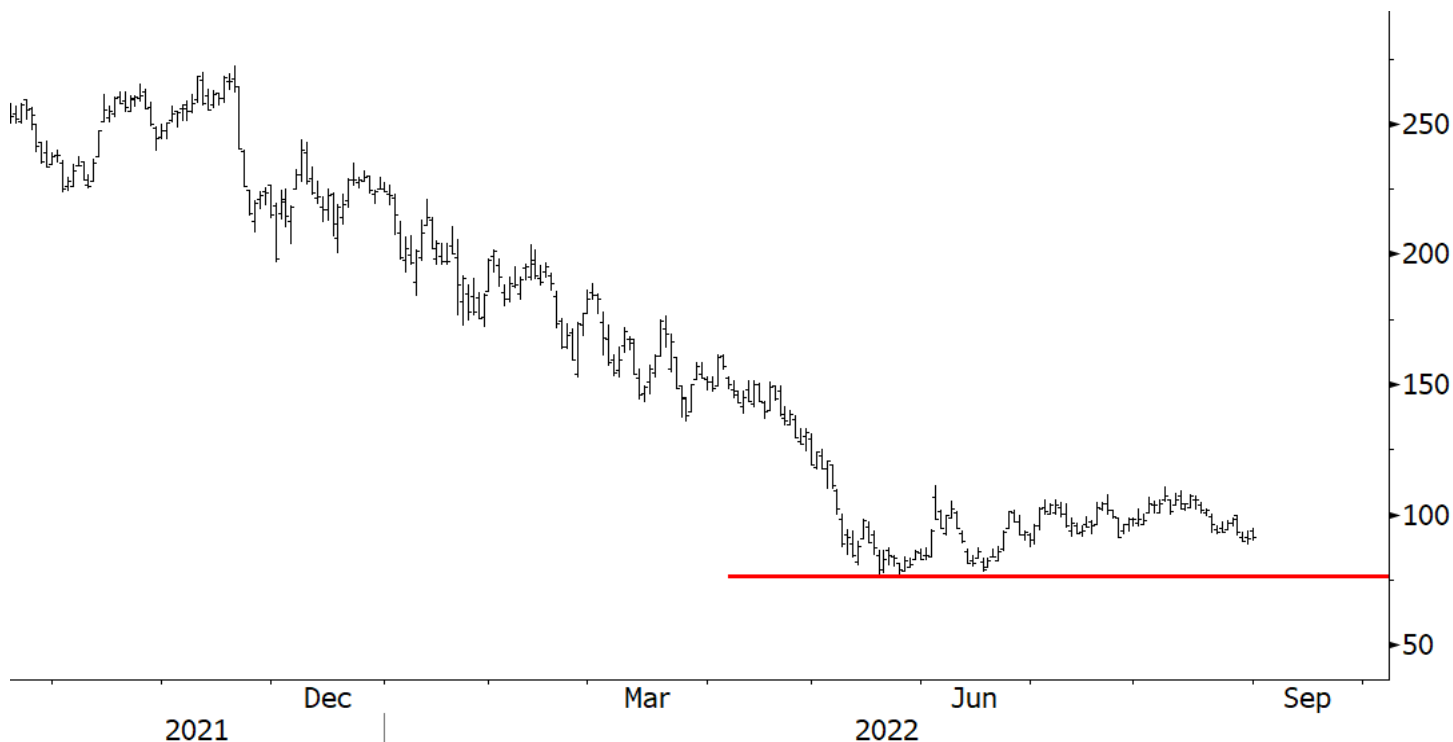
As readers also will know, if one is long a stock in this position, more often than not, it's right to take measures, before things get worse.

# See following examples...

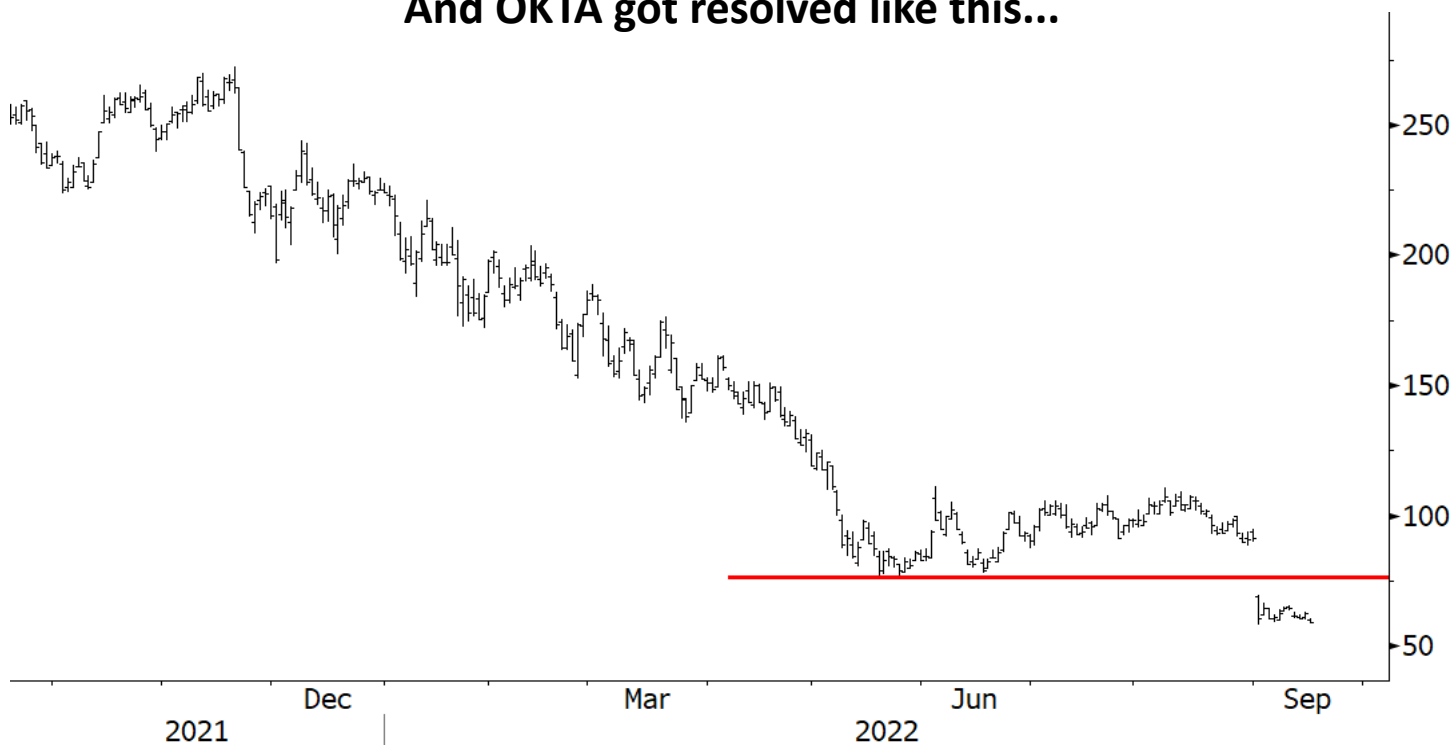
Source: Worth Charting, Bloomberg, FactSet

## MONEY IN MOTION

Okta (OKTA) was setup like this...



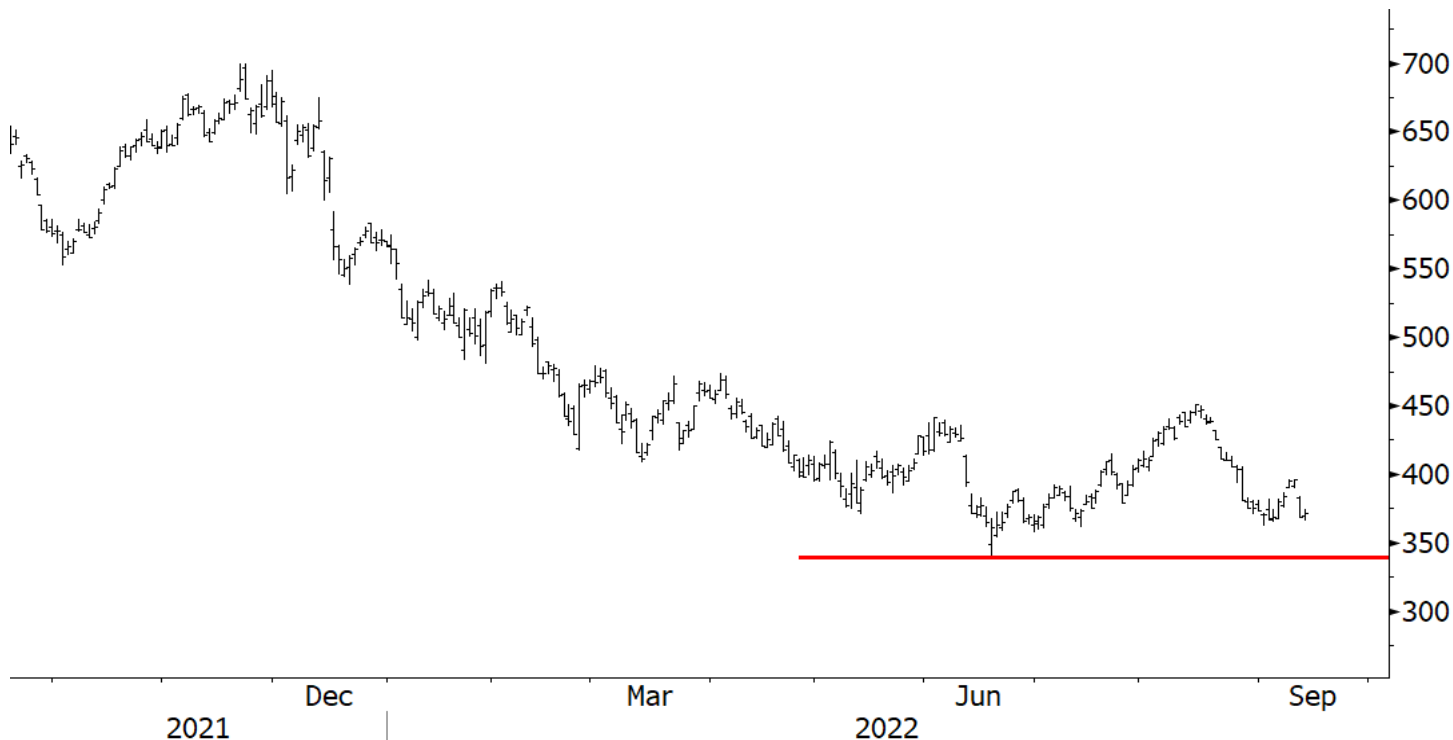
And OKTA got resolved like this...



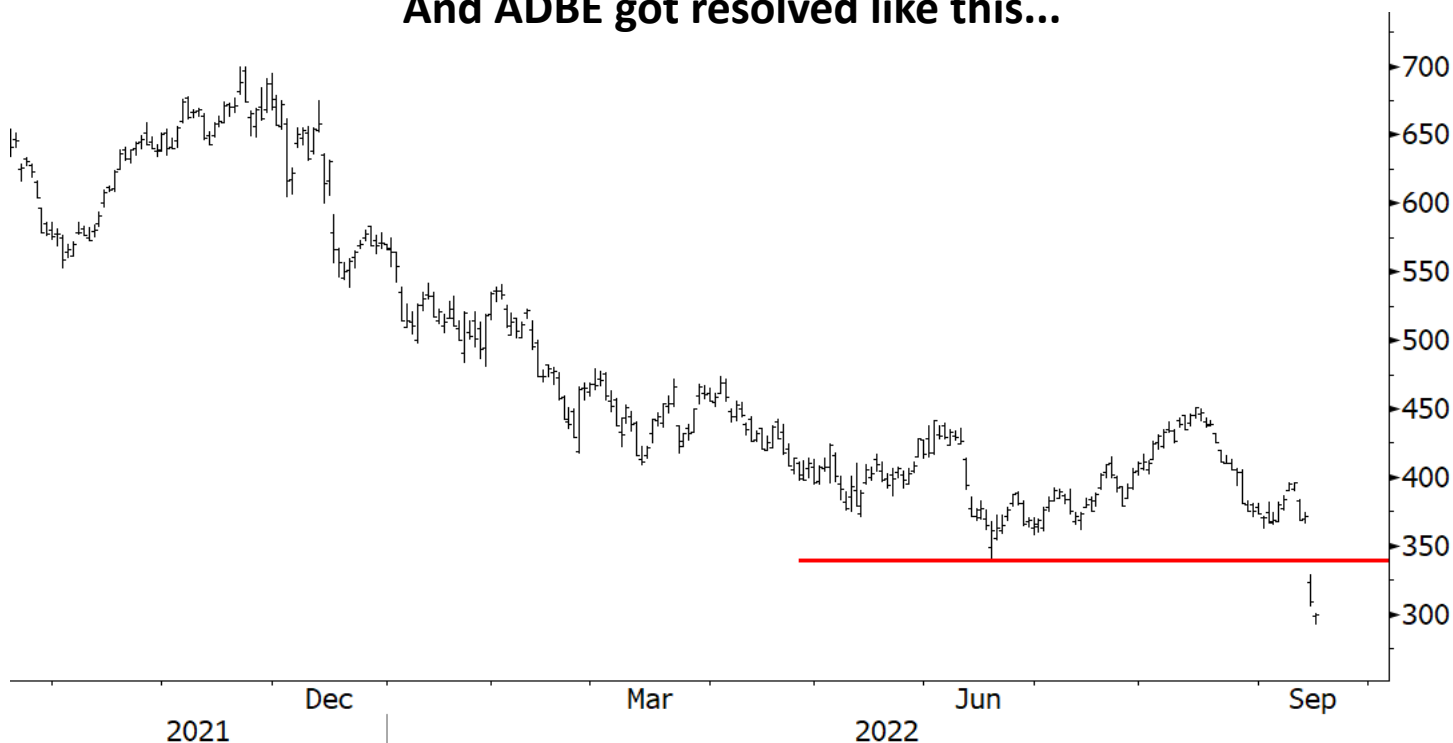
Source: Worth Charting, Bloomberg, FactSet

# MONEY IN MOTION

## Adobe (ADBE) was setup like this...



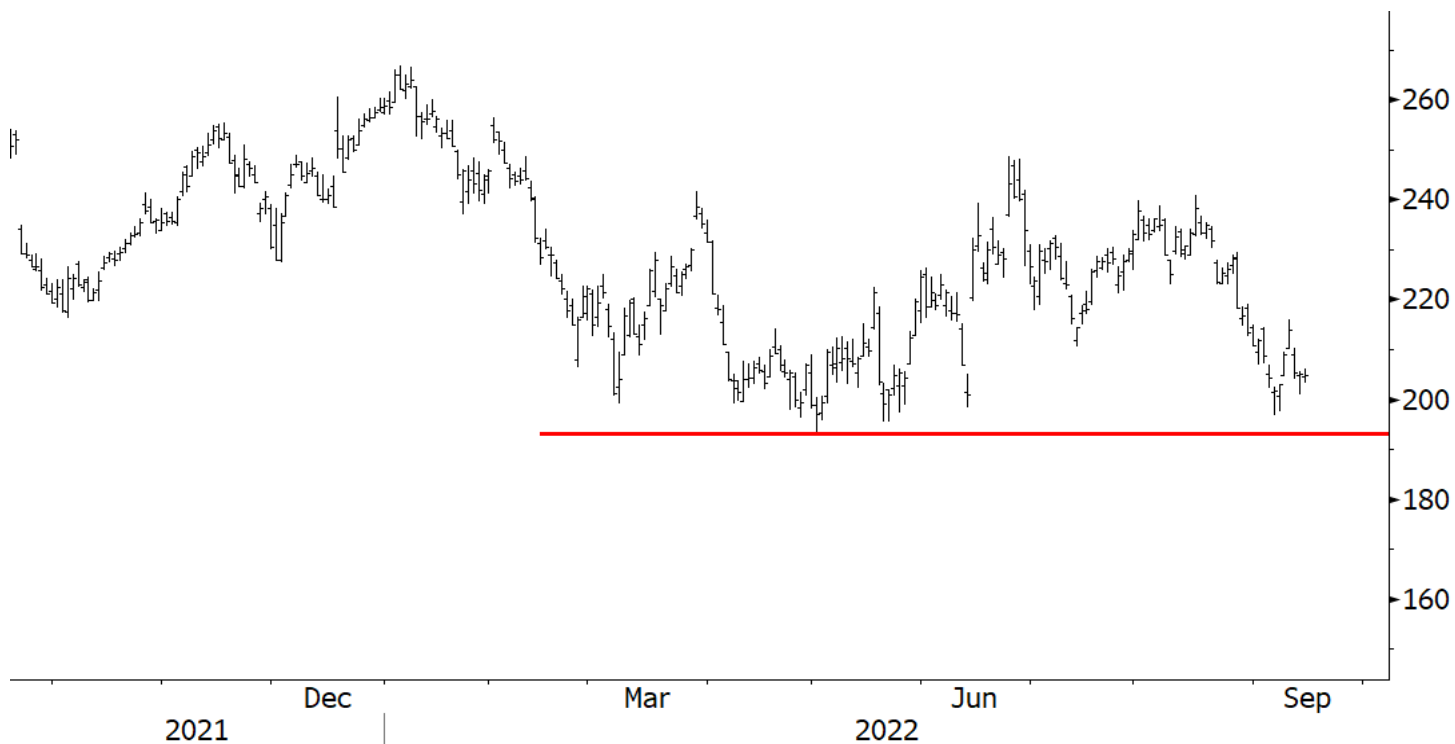
## And ADBE got resolved like this...



Source: Worth Charting, Bloomberg, FactSet

## MONEY IN MOTION

### FedEx (FDX) was setup like this...



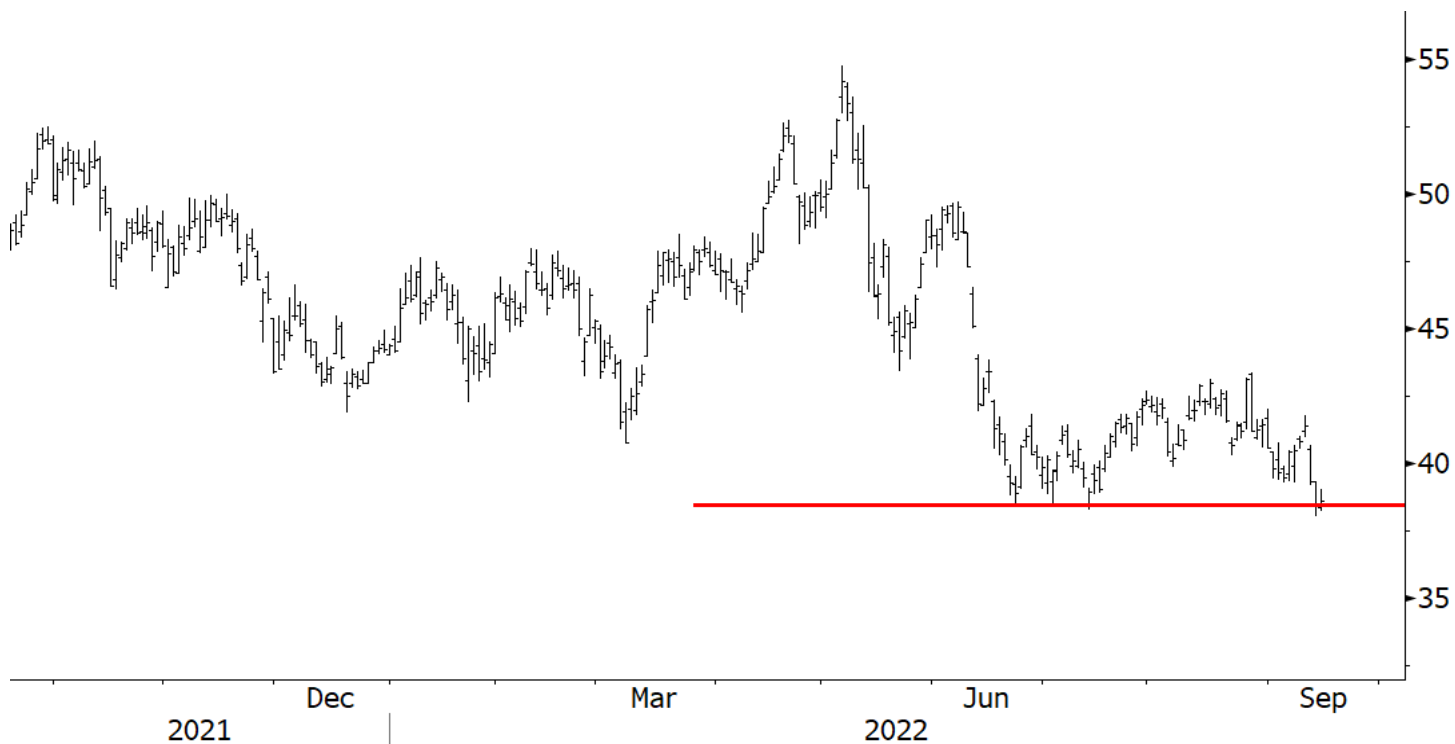
### And FDX got resolved like this...



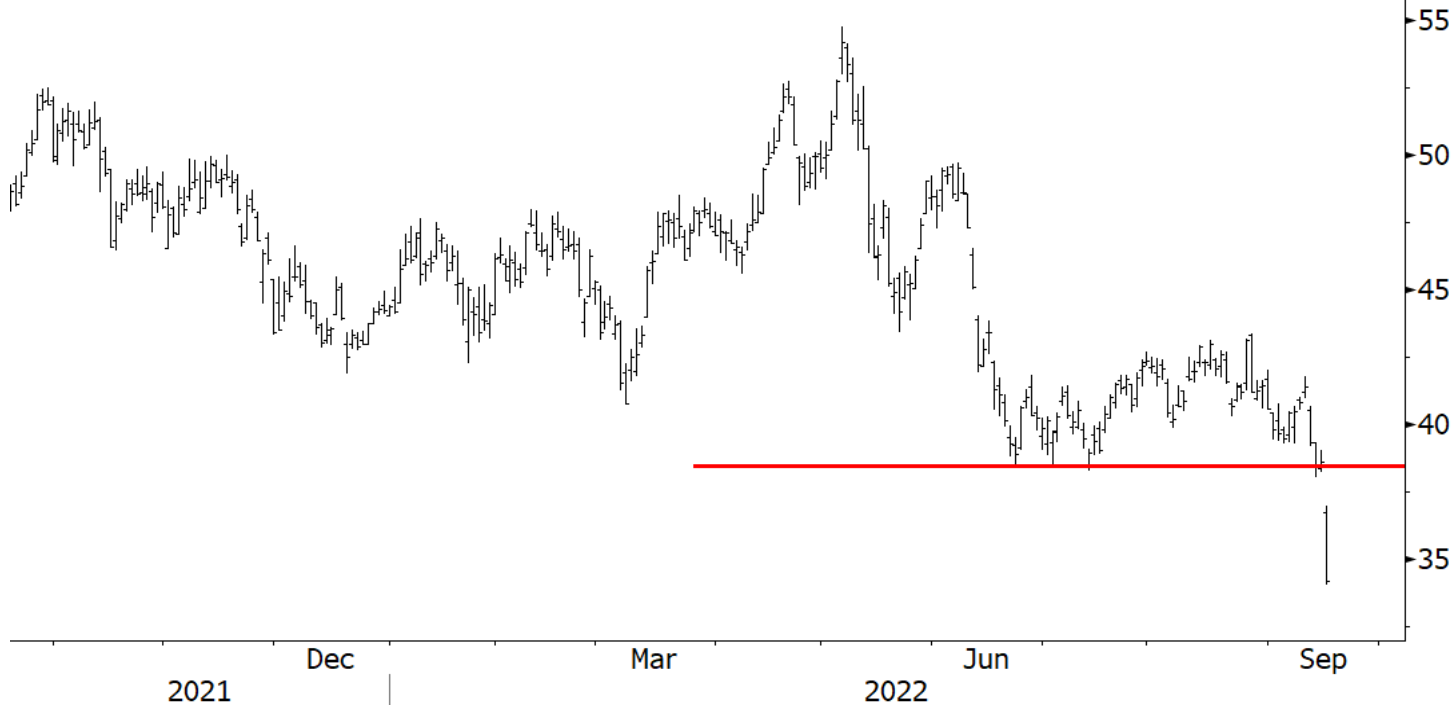
Source: Worth Charting, Bloomberg, FactSet

## MONEY IN MOTION

Westrock (WRK) was setup like this...



And WRK got resolved like this...



Source: Worth Charting, Bloomberg, FactSet

## MONEY IN MOTION

### NCR Corp (NCR) was setup like this...



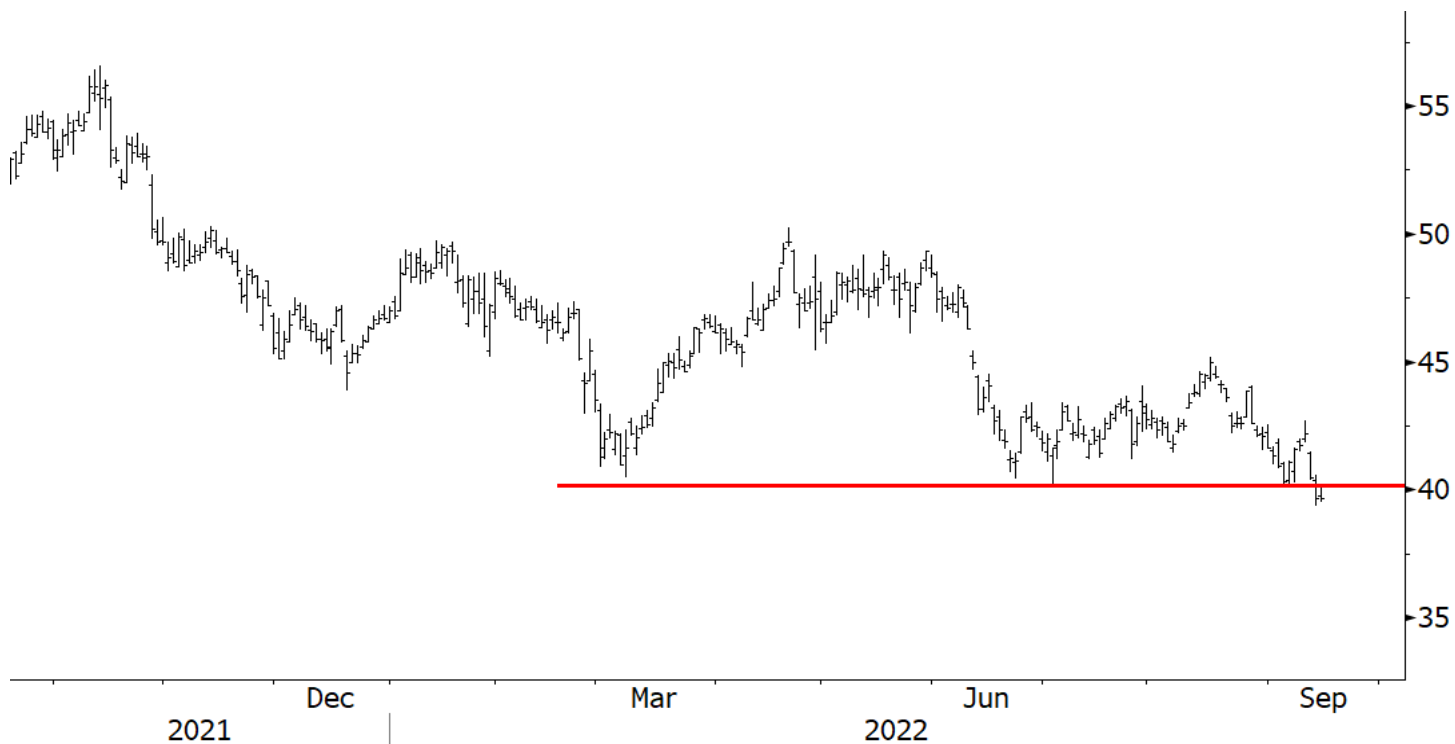
### And NCR got resolved like this...



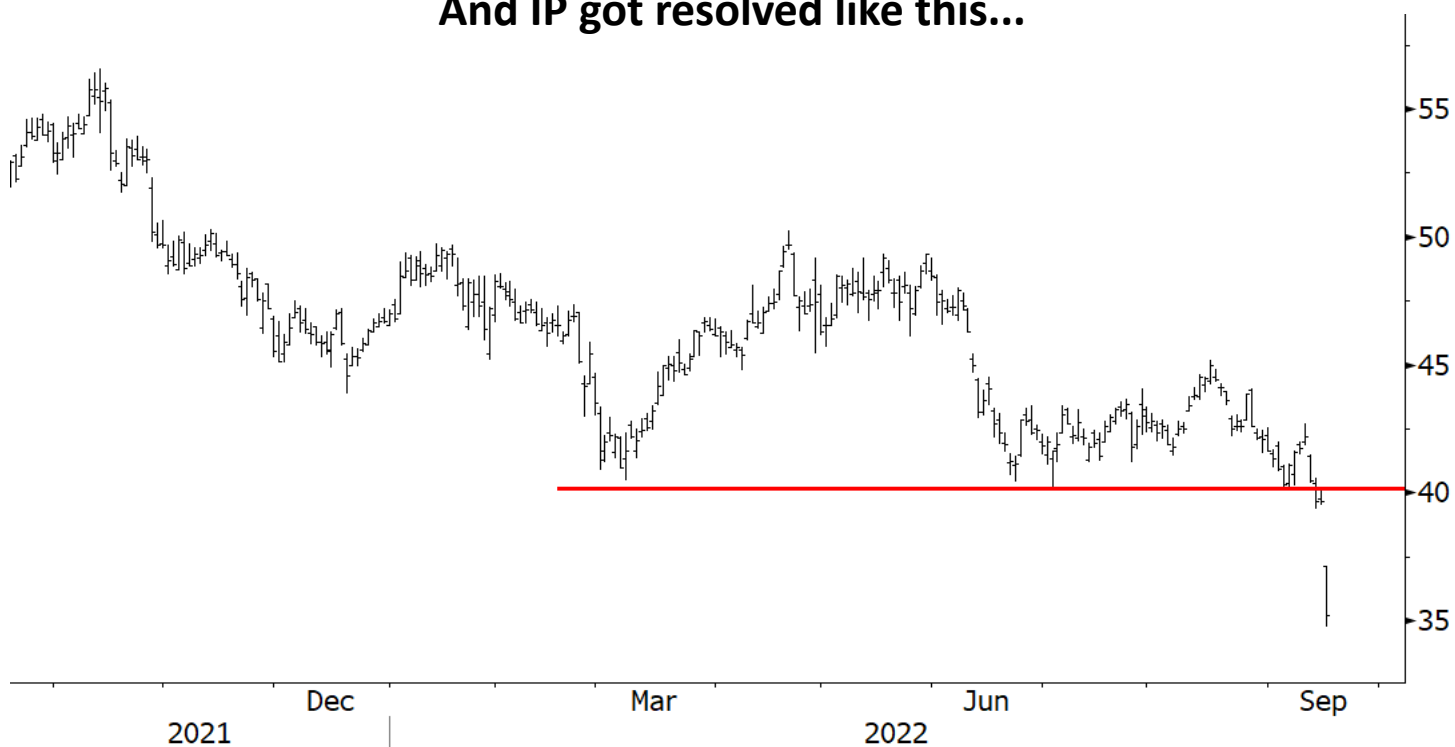
Source: Worth Charting, Bloomberg, FactSet

## MONEY IN MOTION

International Paper (IP) was setup like this...



And IP got resolved like this...

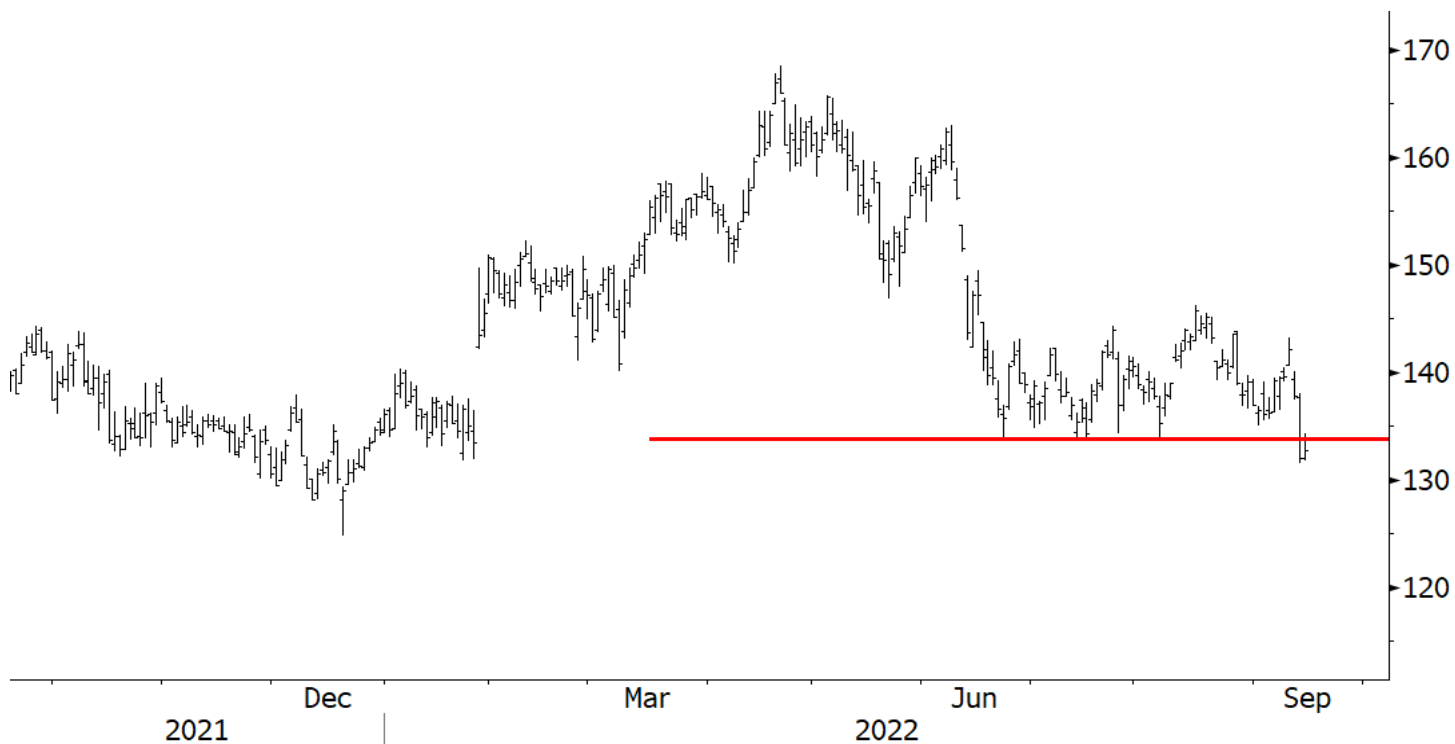


Source: Worth Charting, Bloomberg, FactSet

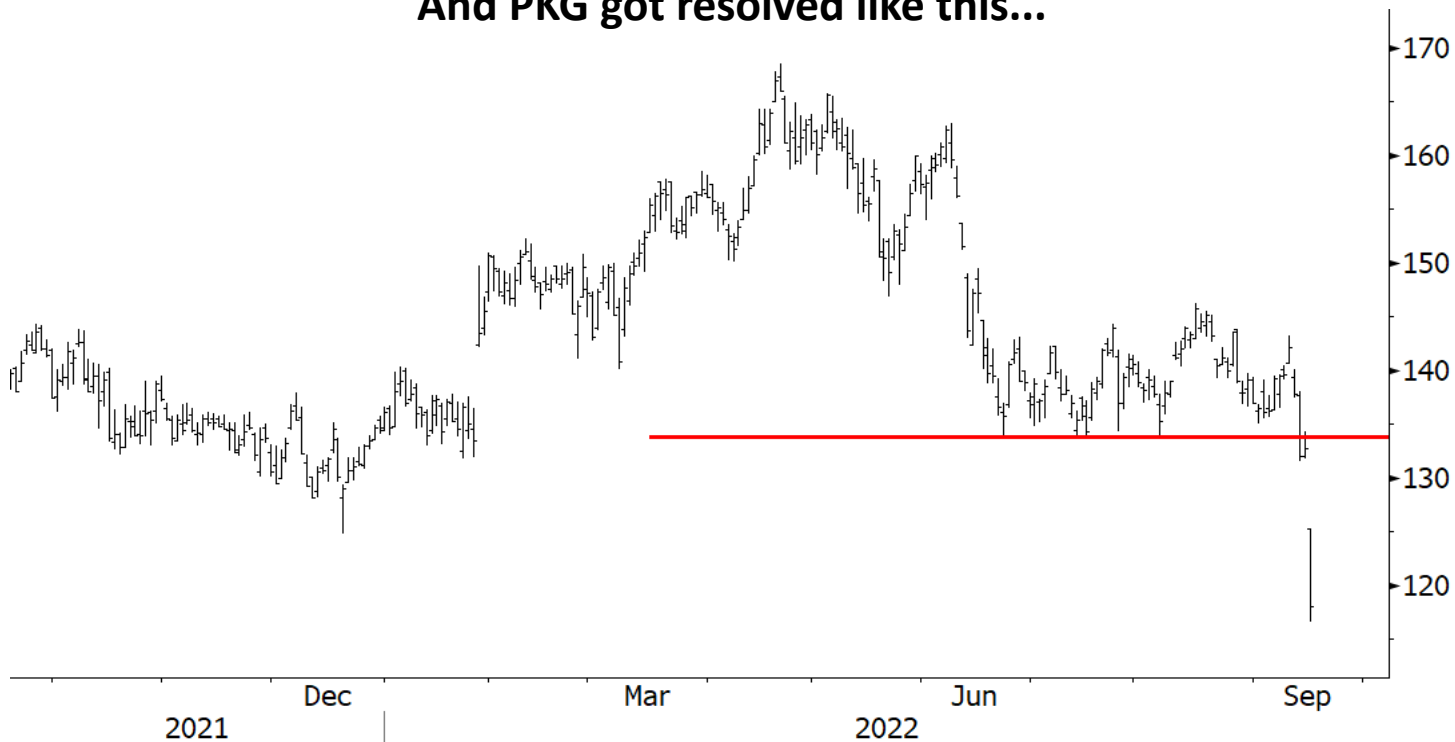


## MONEY IN MOTION

### Packaging Corp of America (PKG) was setup like this...



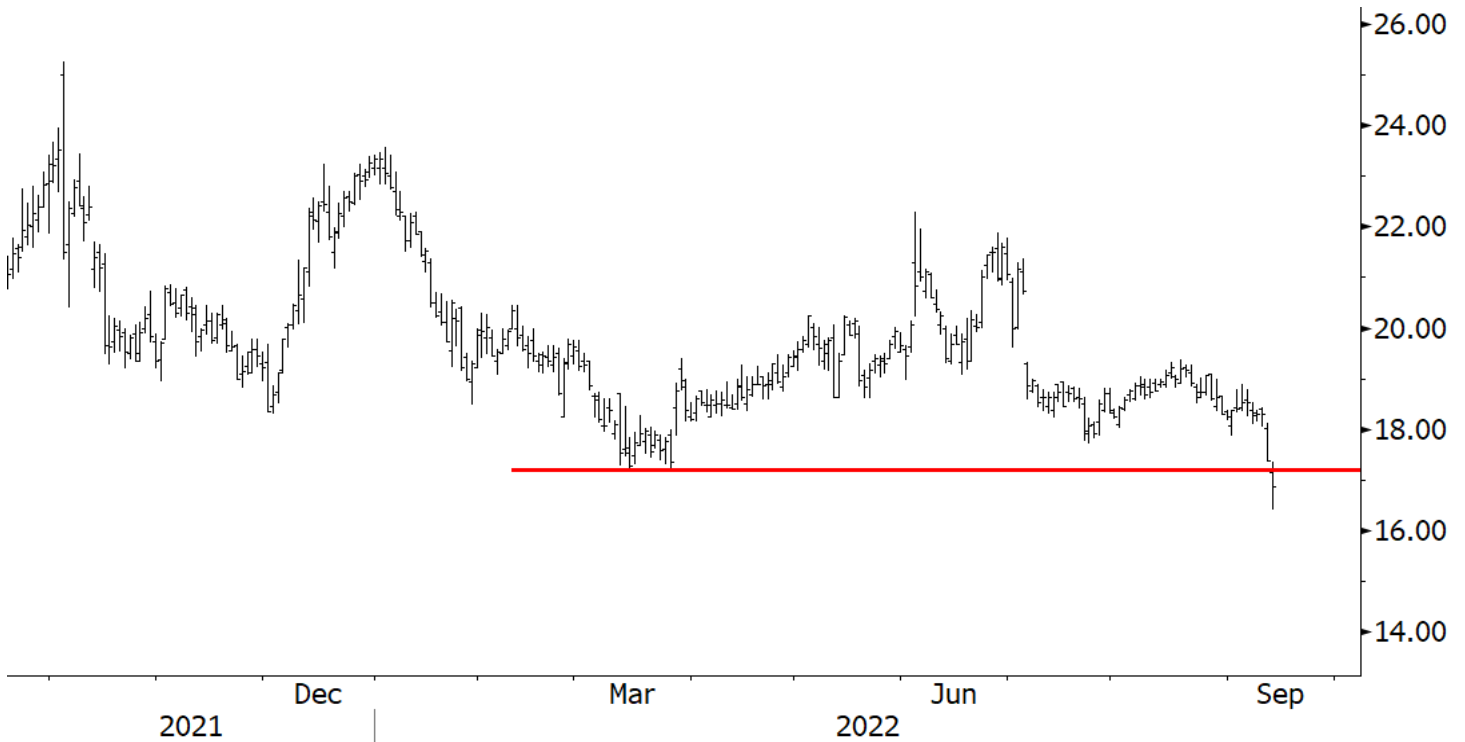
### And PKG got resolved like this...



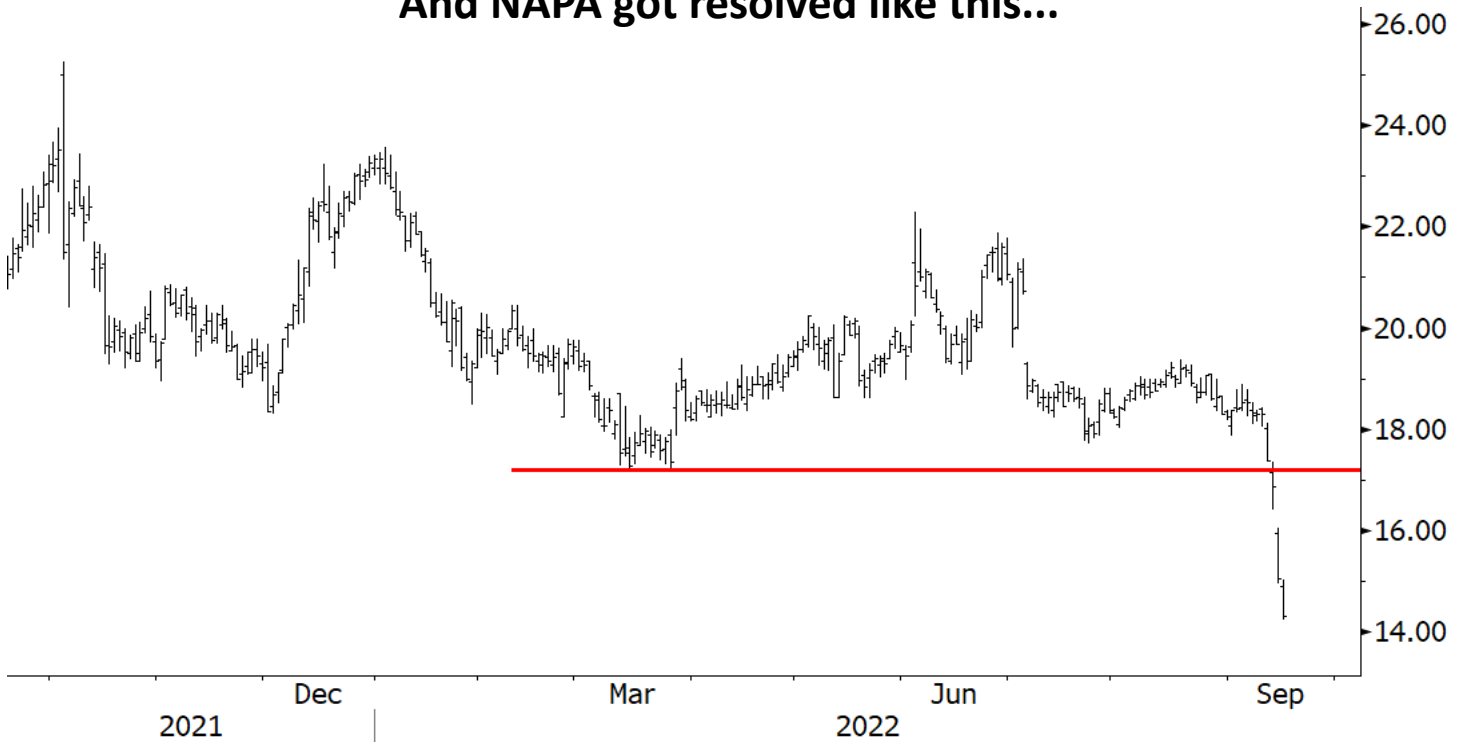
Source: Worth Charting, Bloomberg, FactSet

# MONEY IN MOTION

## Duckhorn Portfolio (NAPA) was setup like this...



## And NAPA got resolved like this...



Source: Worth Charting, Bloomberg, FactSet

**MONEY IN MOTION**

## **Part 2 of 3:**

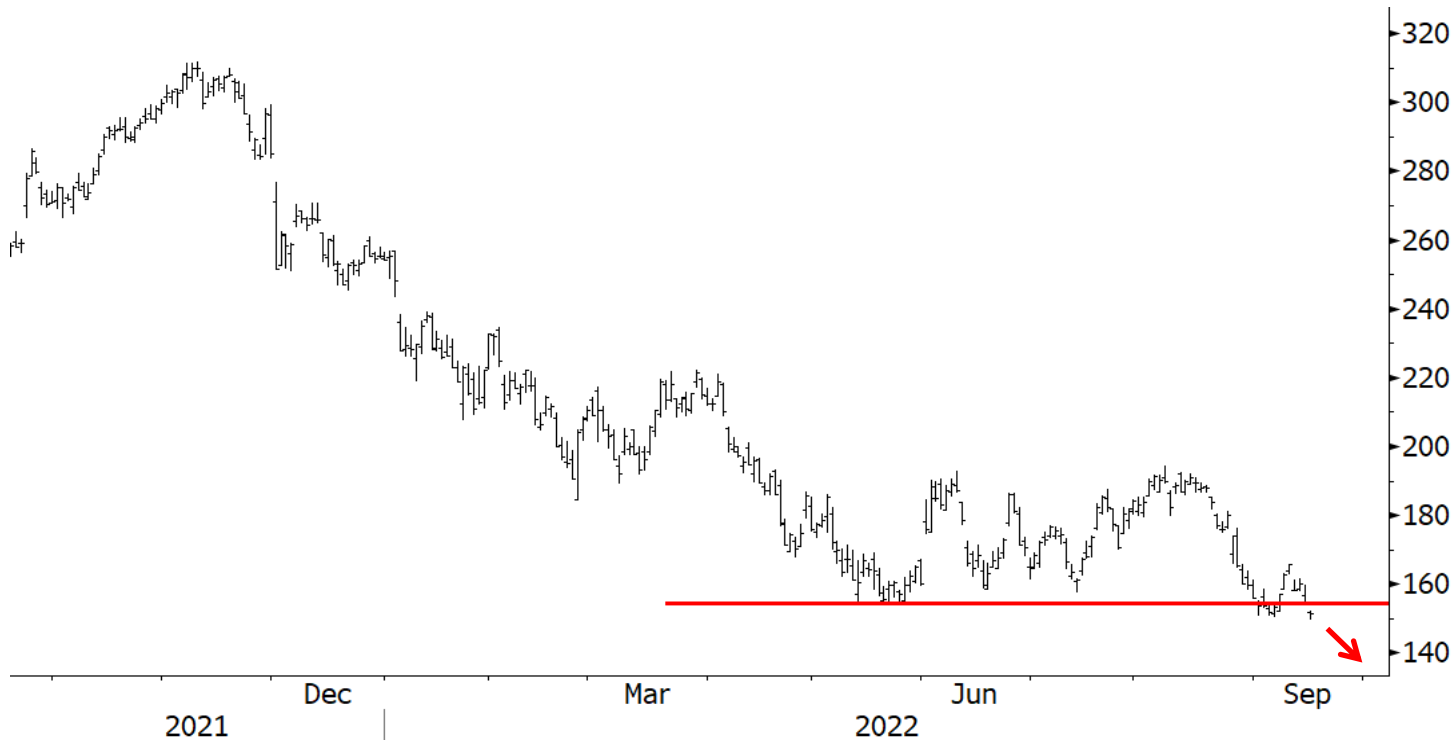
**On the pages that follow, you will find a handful of especially timely  
“Vulnerable-Weak” Sells... stocks judged likely to break sharply lower  
in the period immediately ahead...**

## **See charts below...**

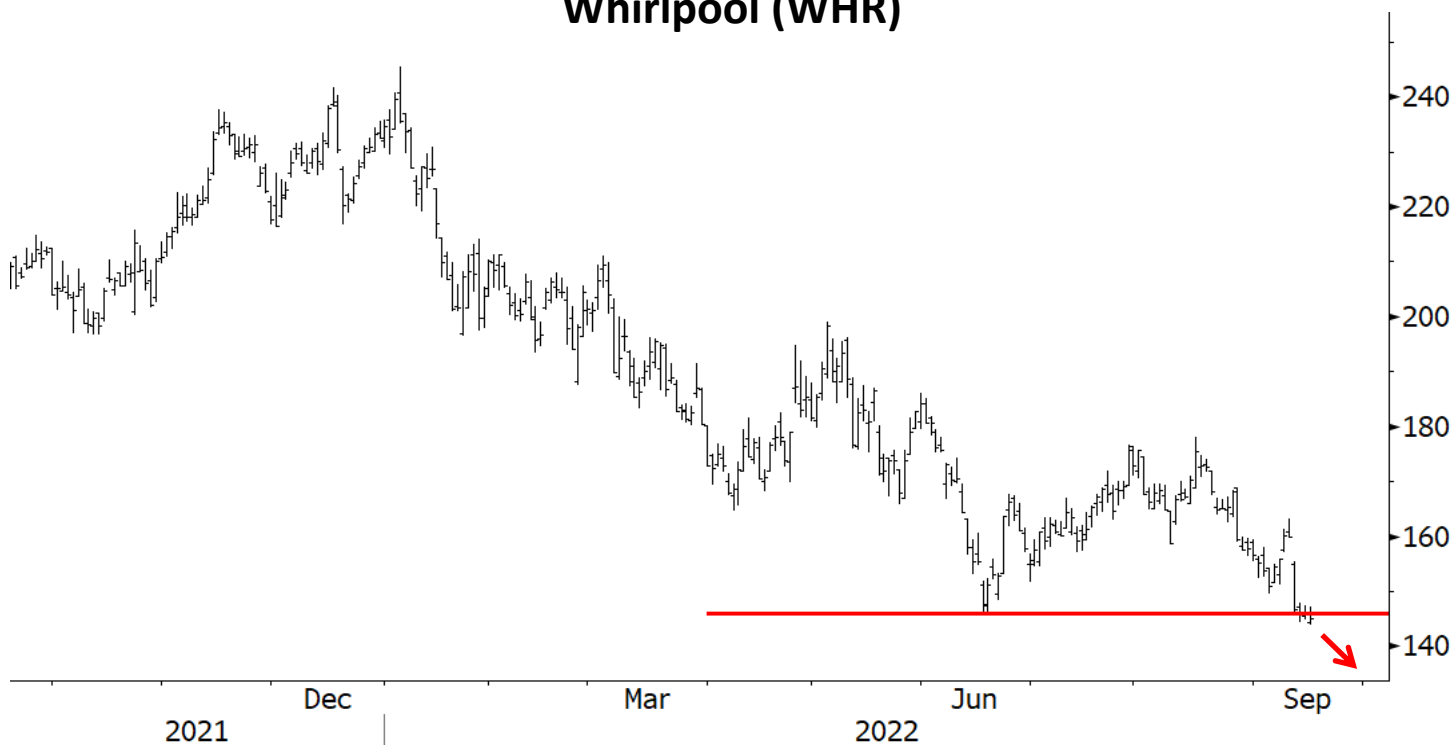
Source: Worth Charting, Bloomberg, FactSet

# MONEY IN MOTION

## Salesforce (CRM)



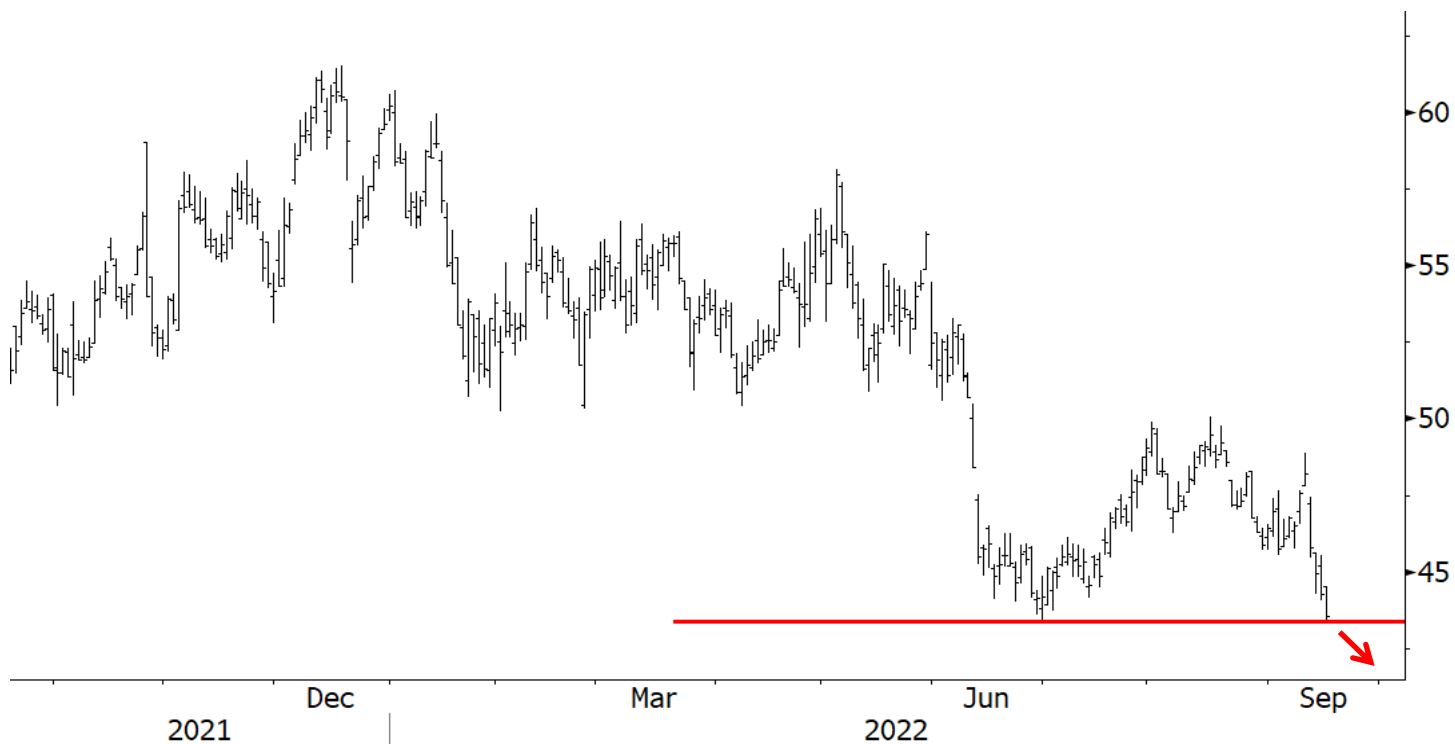
## Whirlpool (WHR)



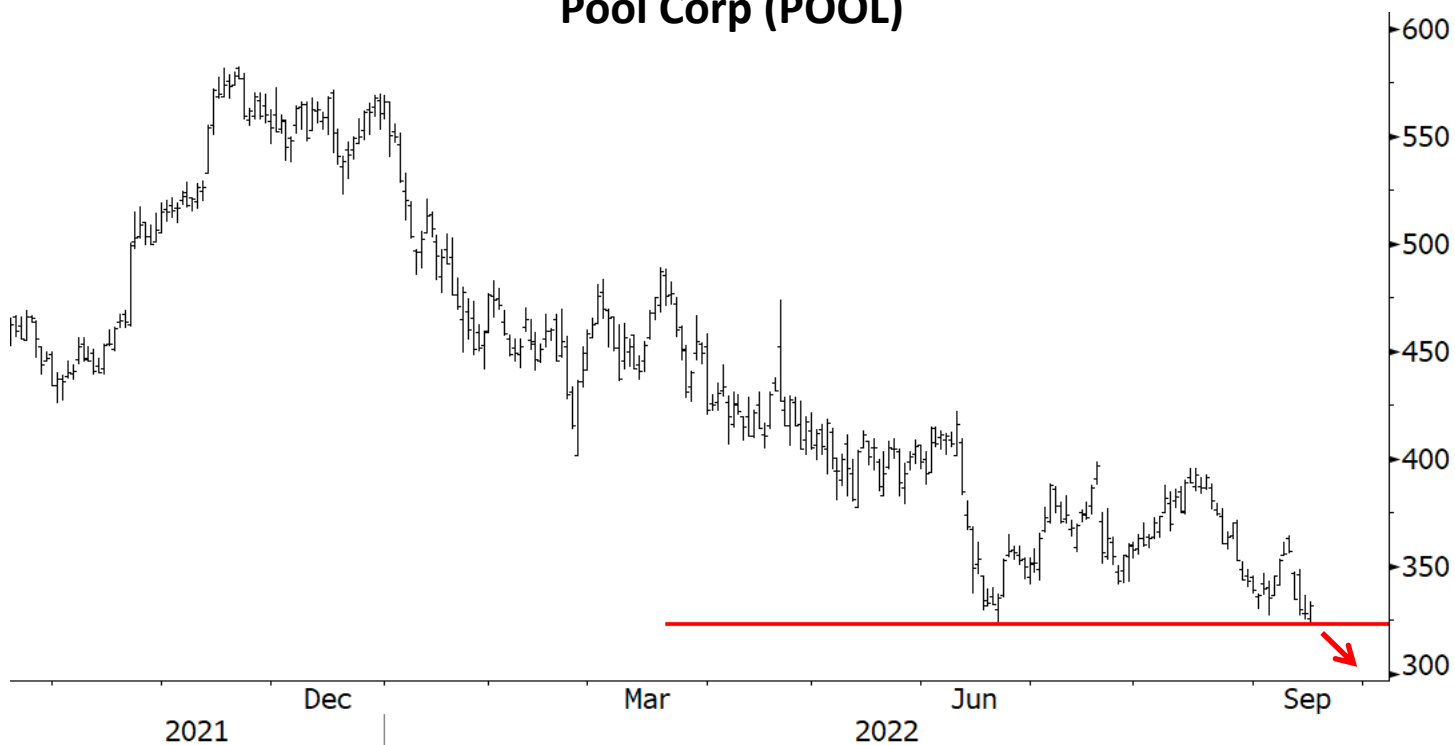
Source: Worth Charting, Bloomberg, FactSet

# MONEY IN MOTION

## PotlatchDeltic (PCH)



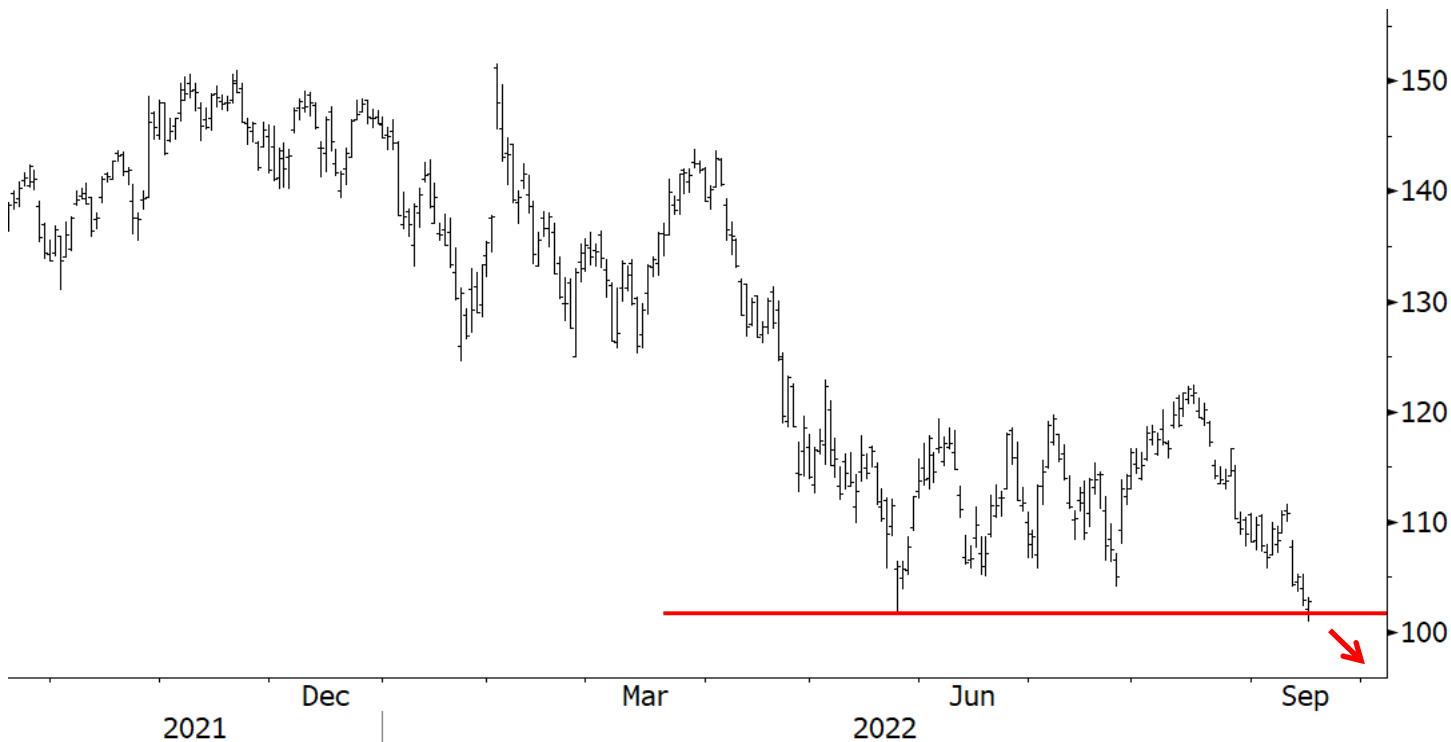
## Pool Corp (POOL)



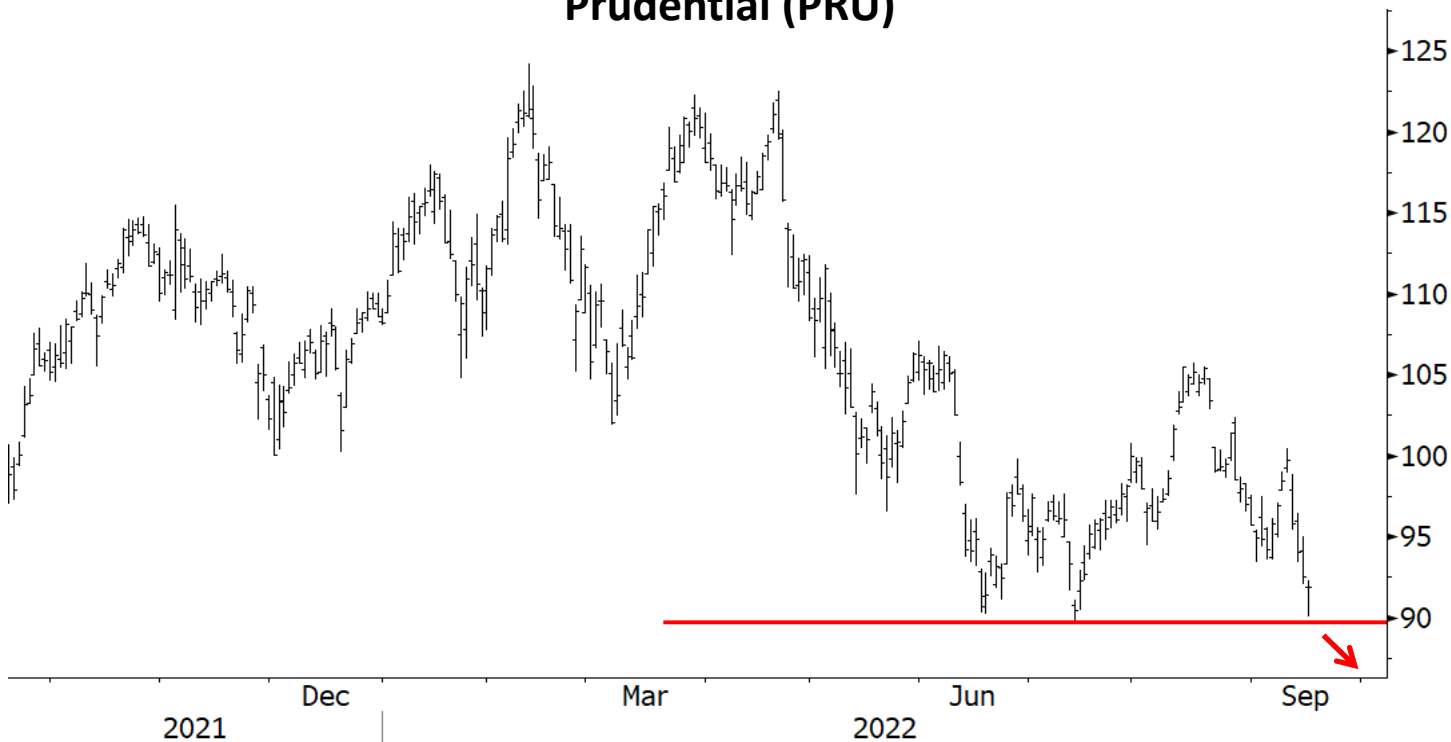
Source: Worth Charting, Bloomberg, FactSet

# MONEY IN MOTION

## Alphabet (GOOGL)



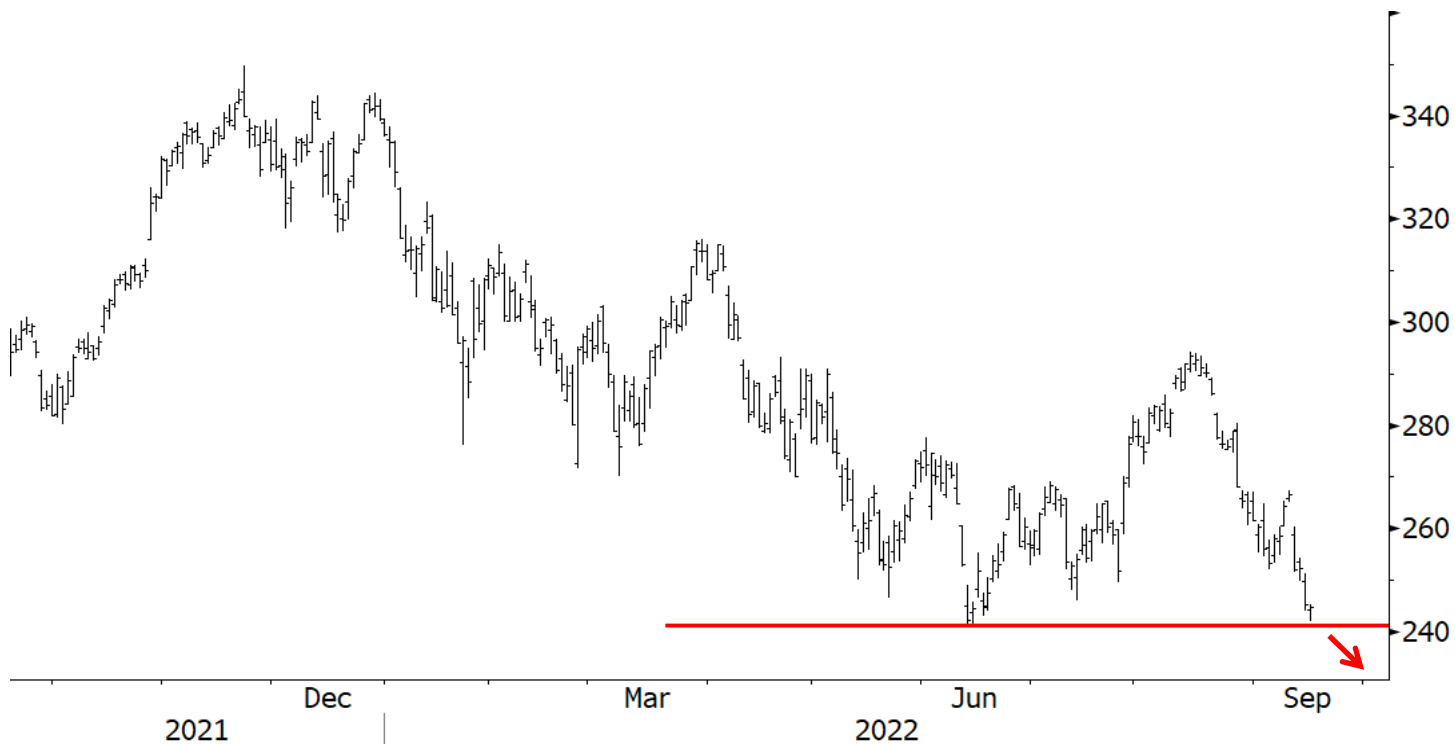
## Prudential (PRU)



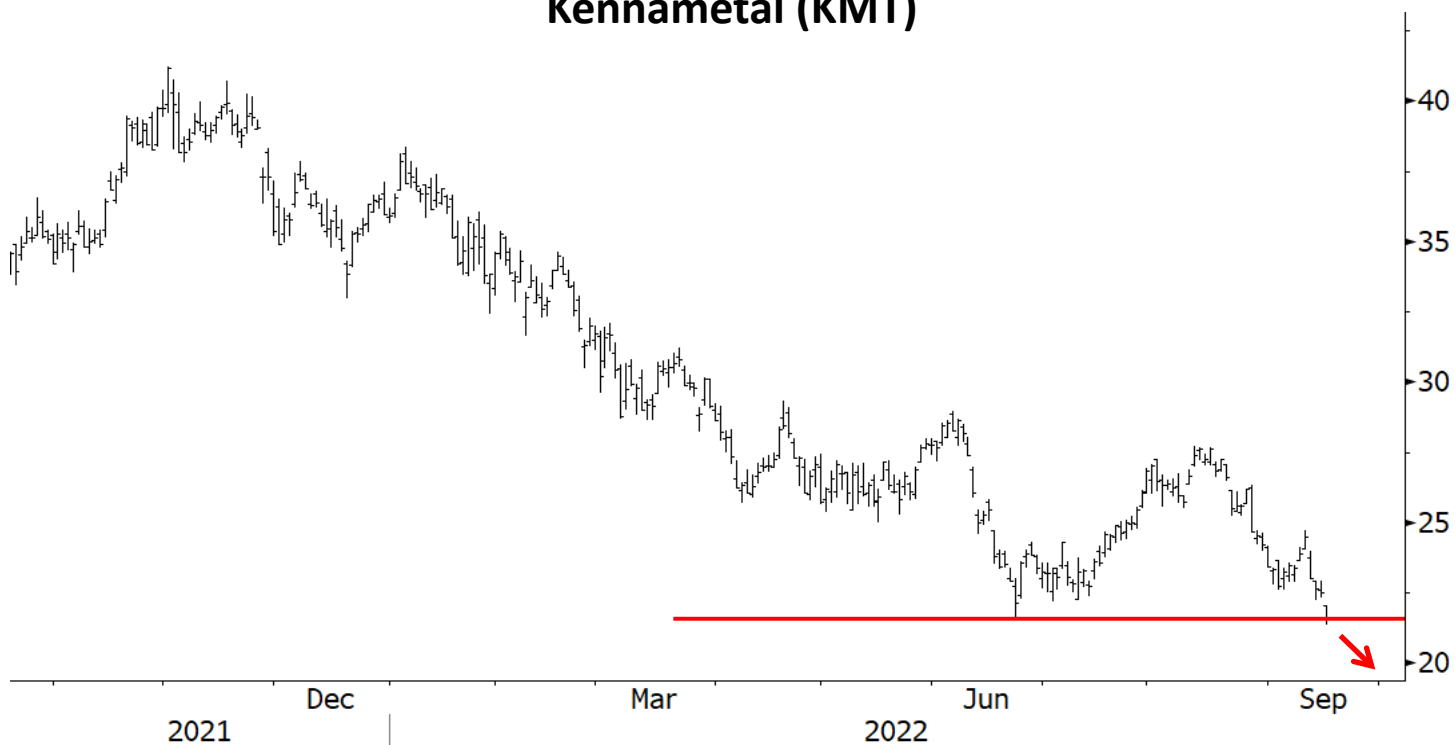
Source: Worth Charting, Bloomberg, FactSet

# MONEY IN MOTION

## Microsoft (MSFT)



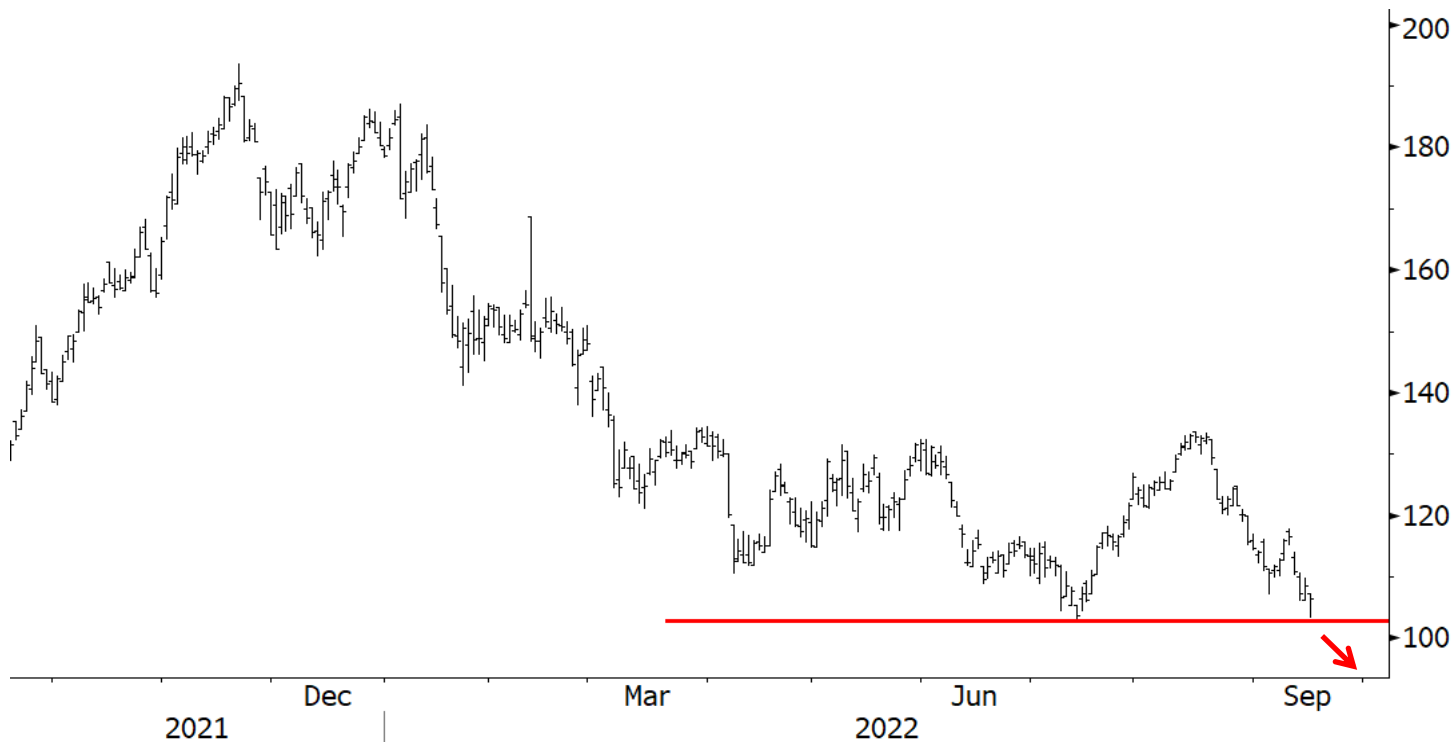
## Kennametal (KMT)



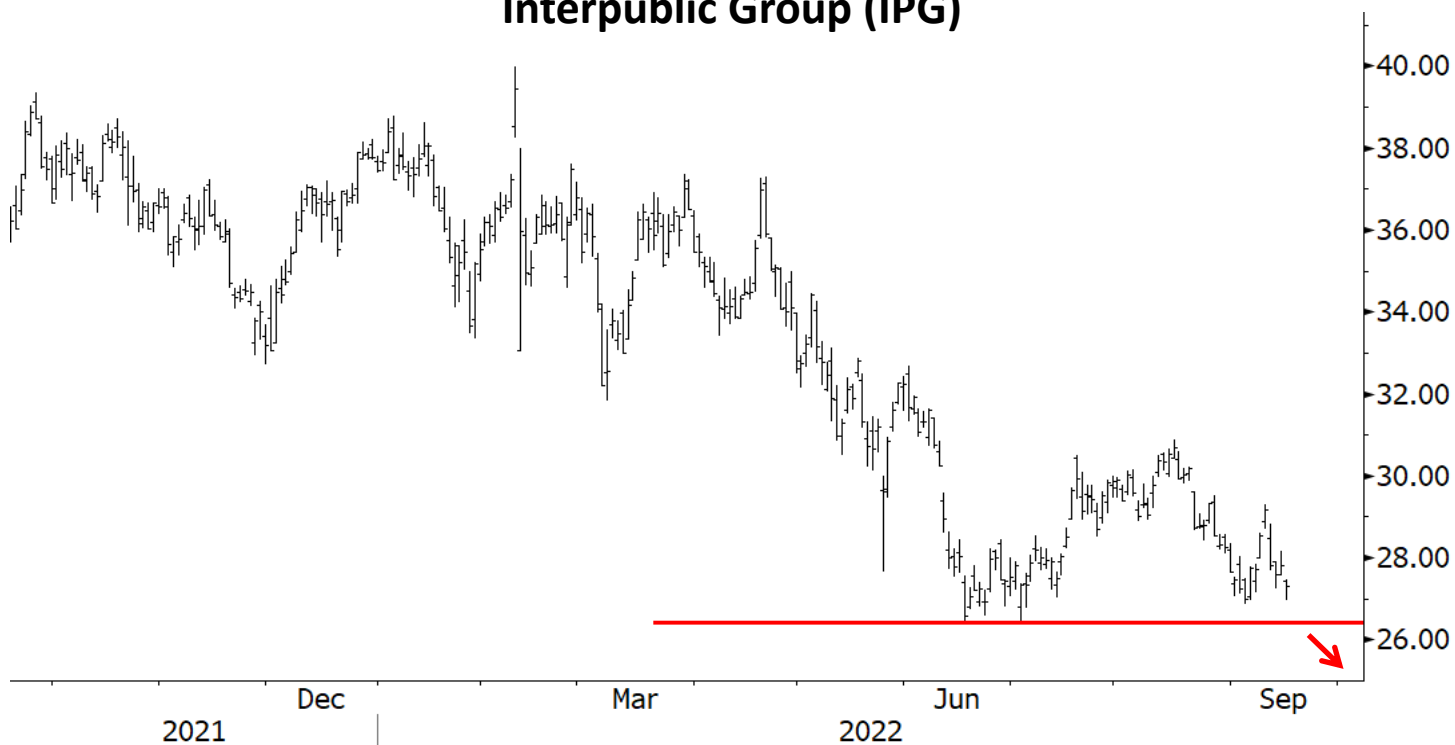
Source: Worth Charting, Bloomberg, FactSet

# MONEY IN MOTION

## Piper Sandler (PIPR)



## Interpublic Group (IPG)

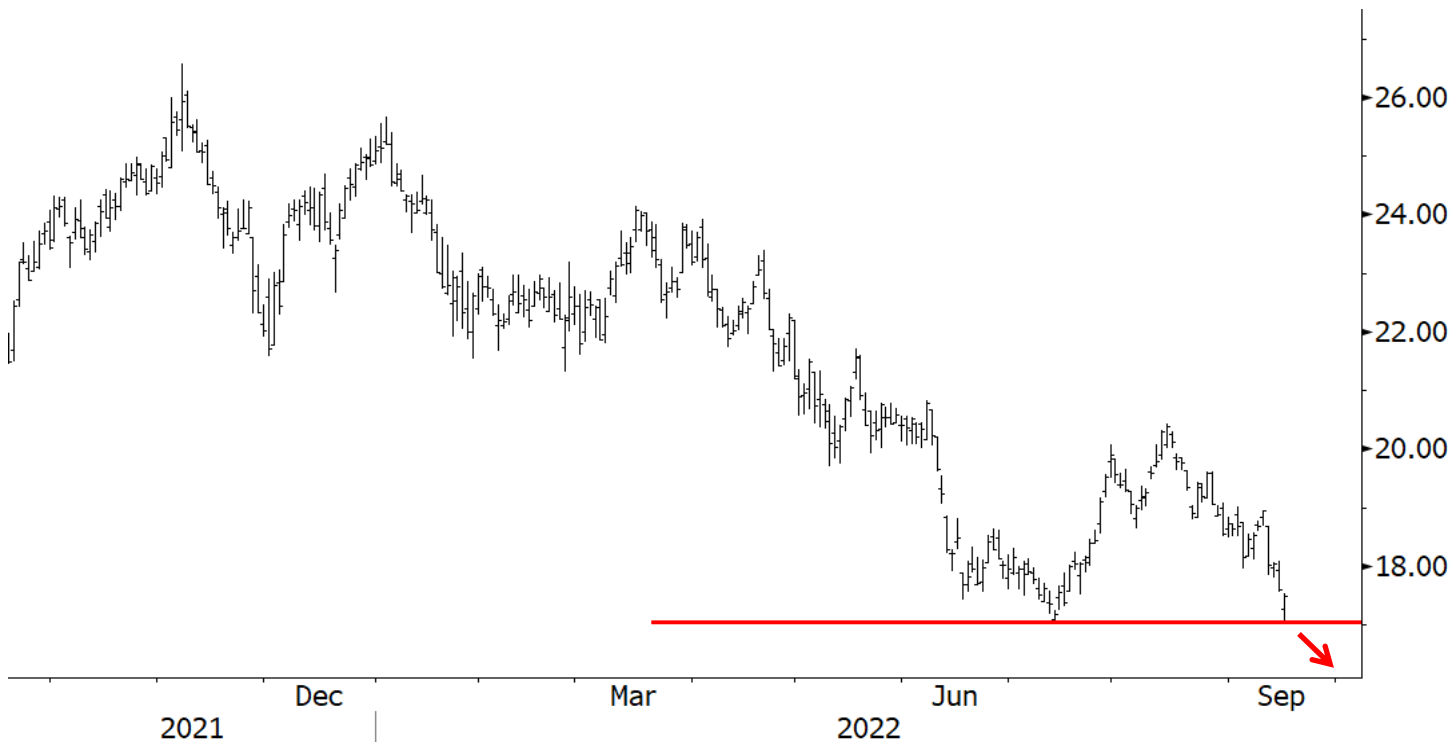


Source: Worth Charting, Bloomberg, FactSet

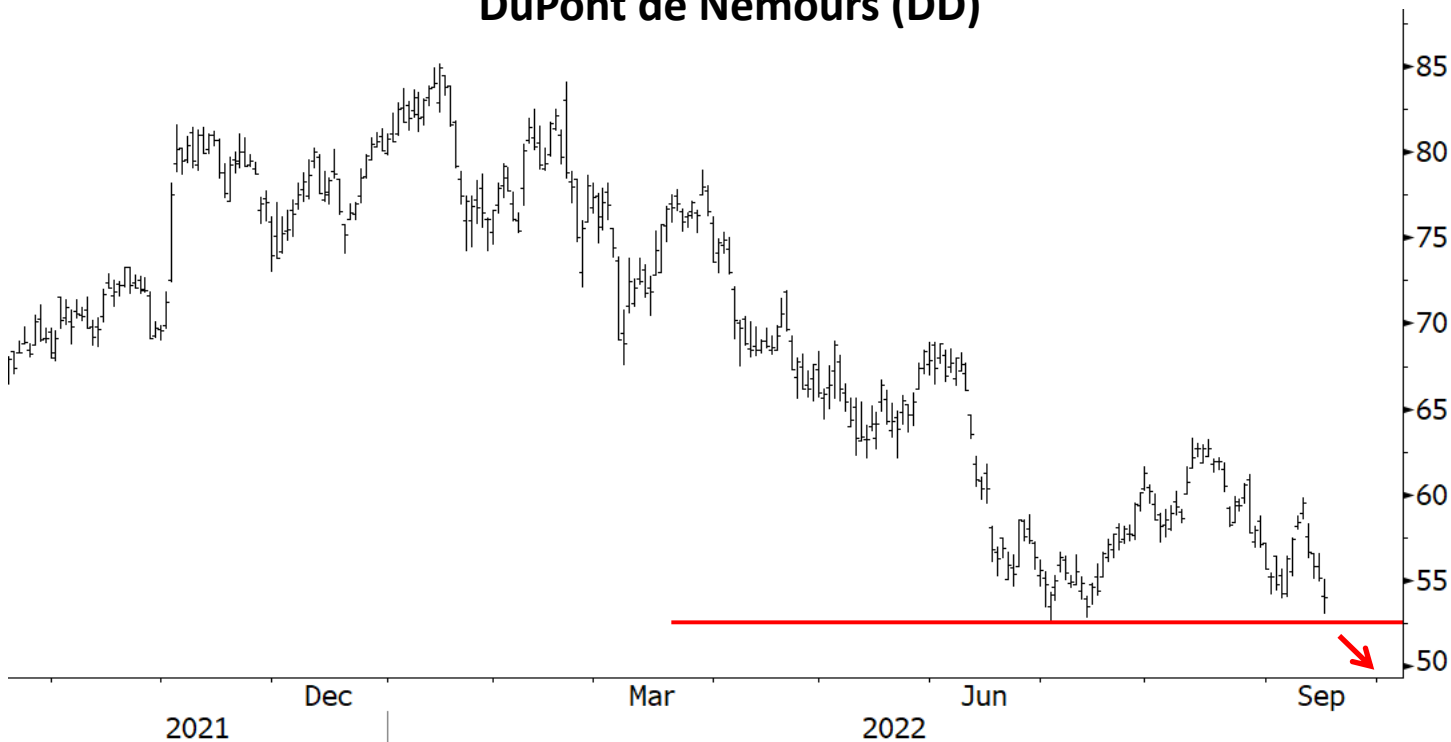


# MONEY IN MOTION

## Alexander & Baldwin (ALEX)



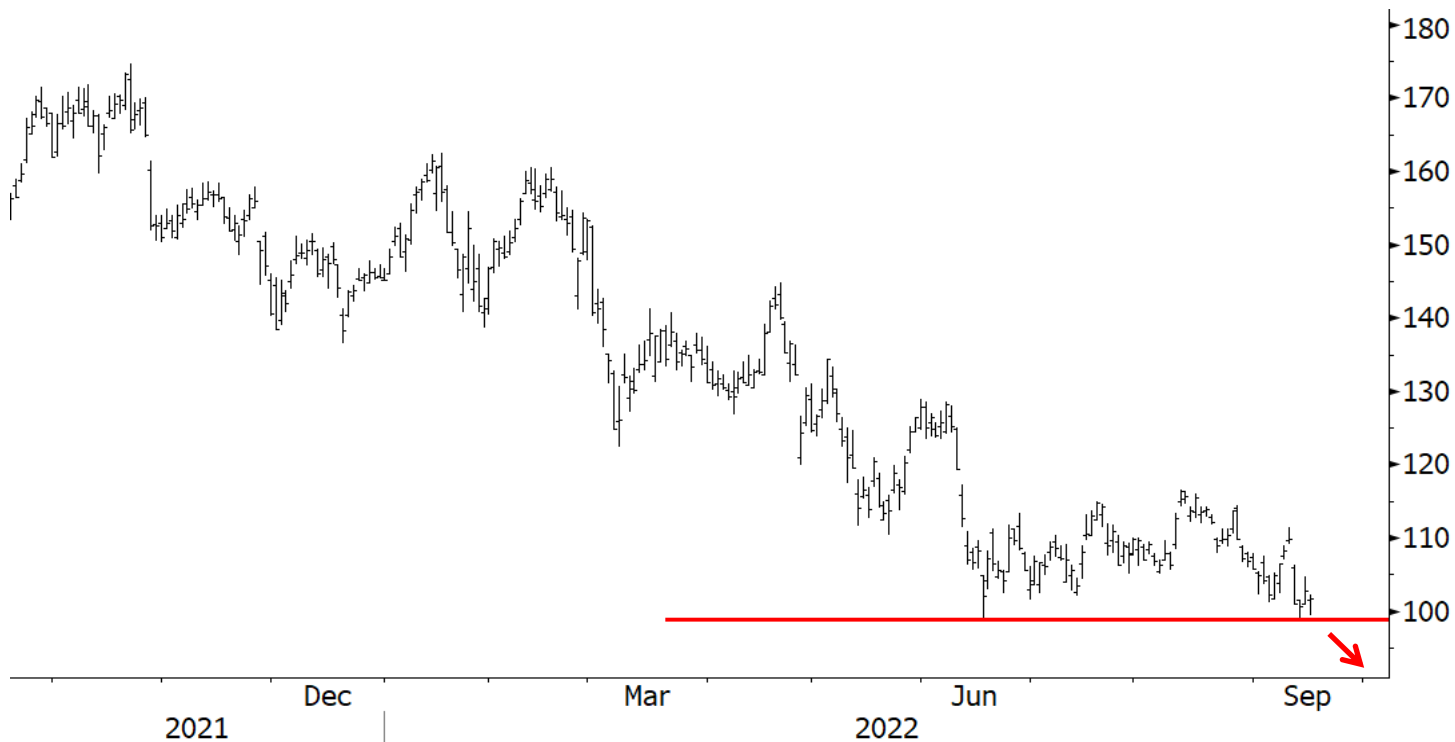
## DuPont de Nemours (DD)



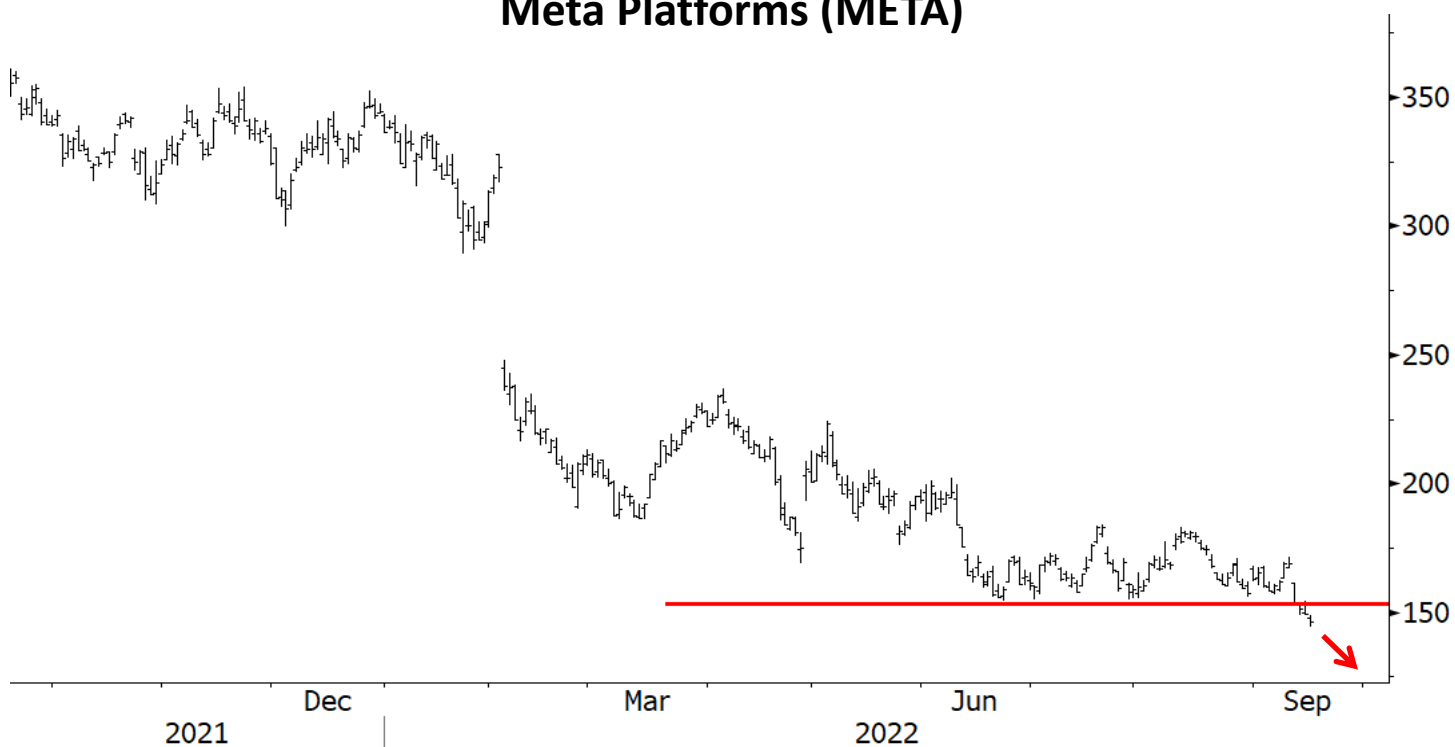
Source: Worth Charting, Bloomberg, FactSet

# MONEY IN MOTION

## Capital One Financial (COF)



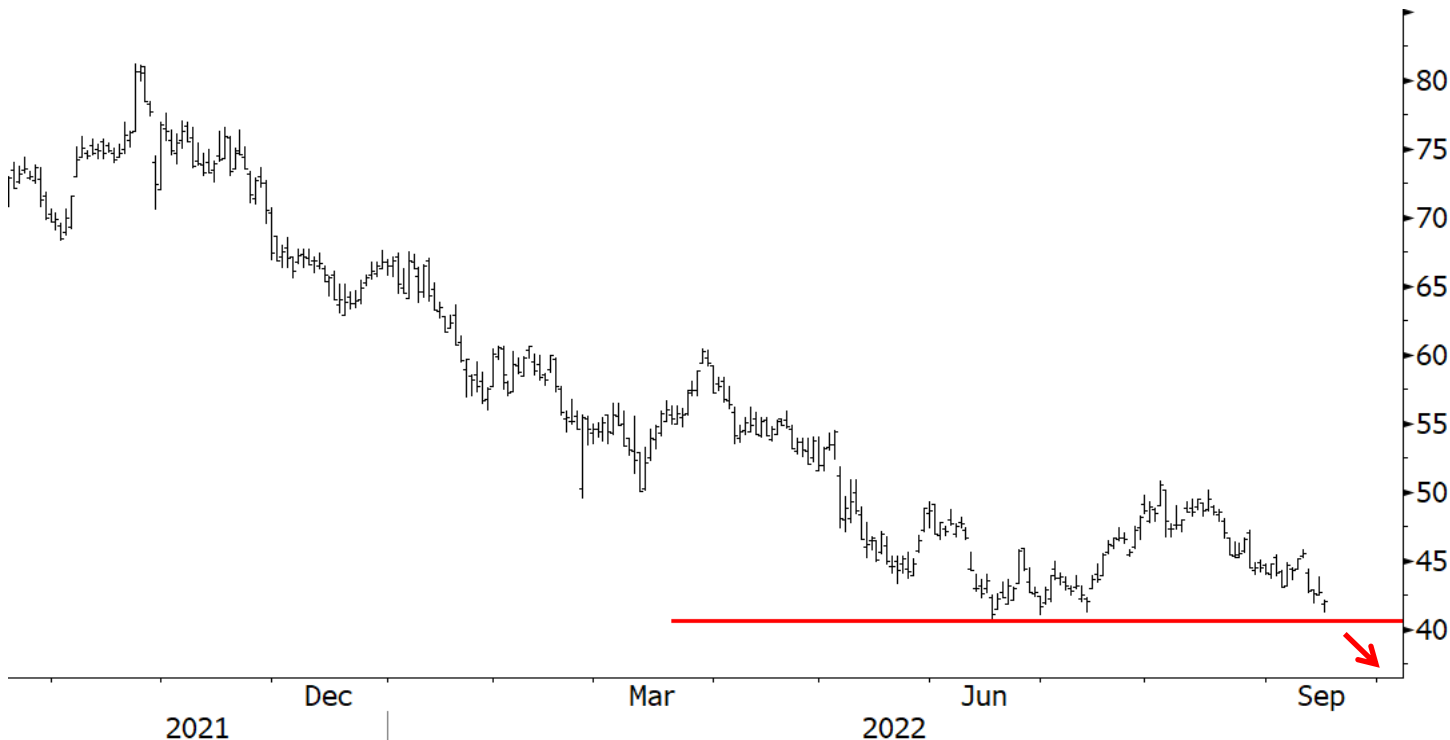
## Meta Platforms (META)



Source: Worth Charting, Bloomberg, FactSet

# MONEY IN MOTION

## eBay (EBAY)



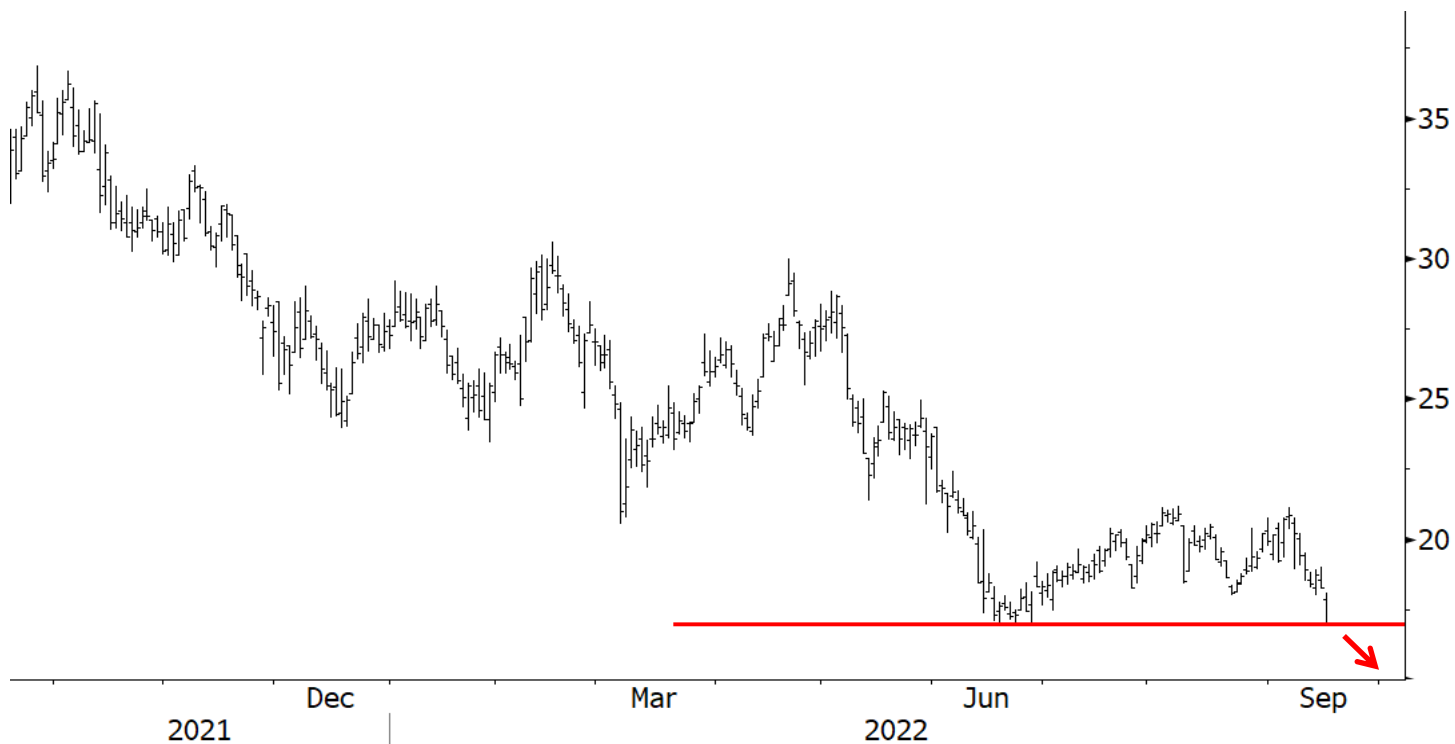
## SiteOne Landscape Supply (SITE)



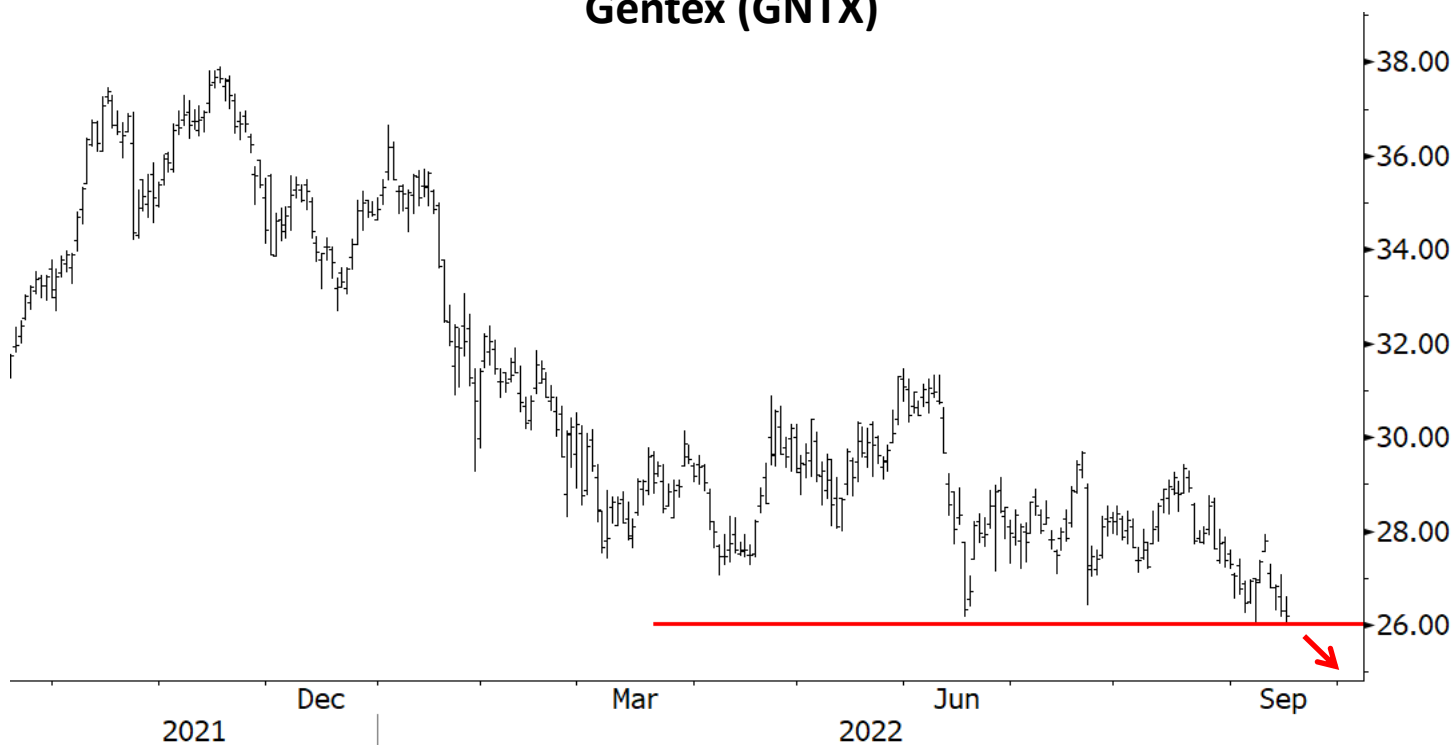
Source: Worth Charting, Bloomberg, FactSet

# MONEY IN MOTION

## Sun Country Airlines Holdings (SNCY)



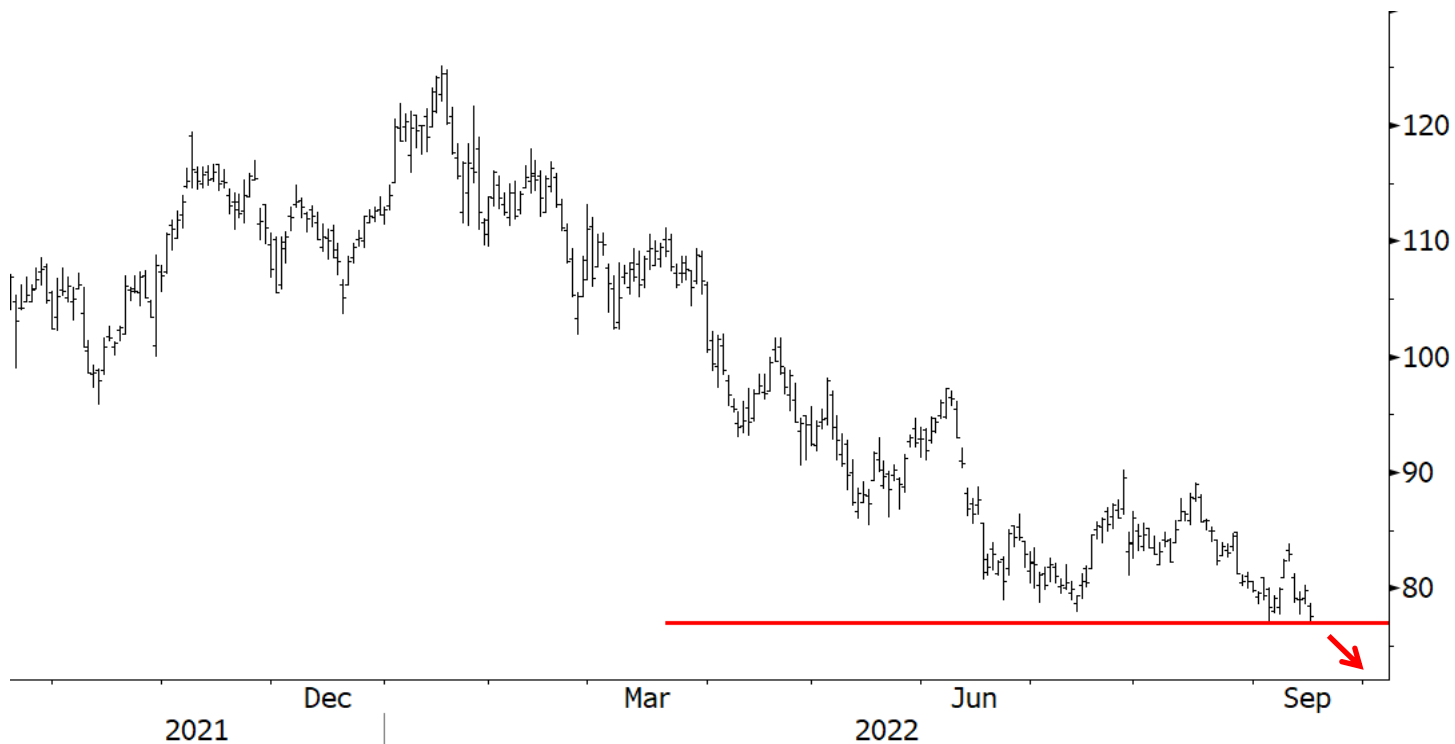
## Gentex (GNTX)



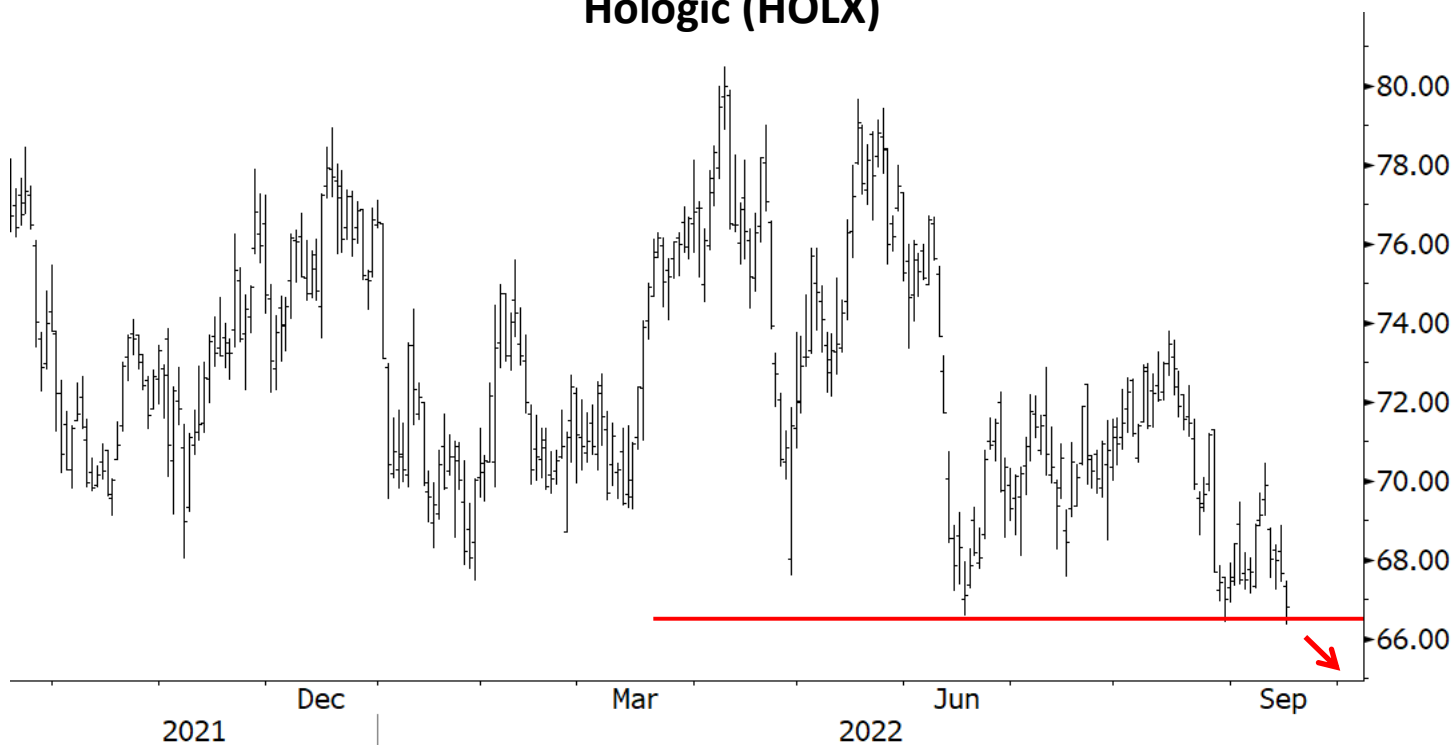
Source: Worth Charting, Bloomberg, FactSet

# MONEY IN MOTION

## Oshkosh (OSK)



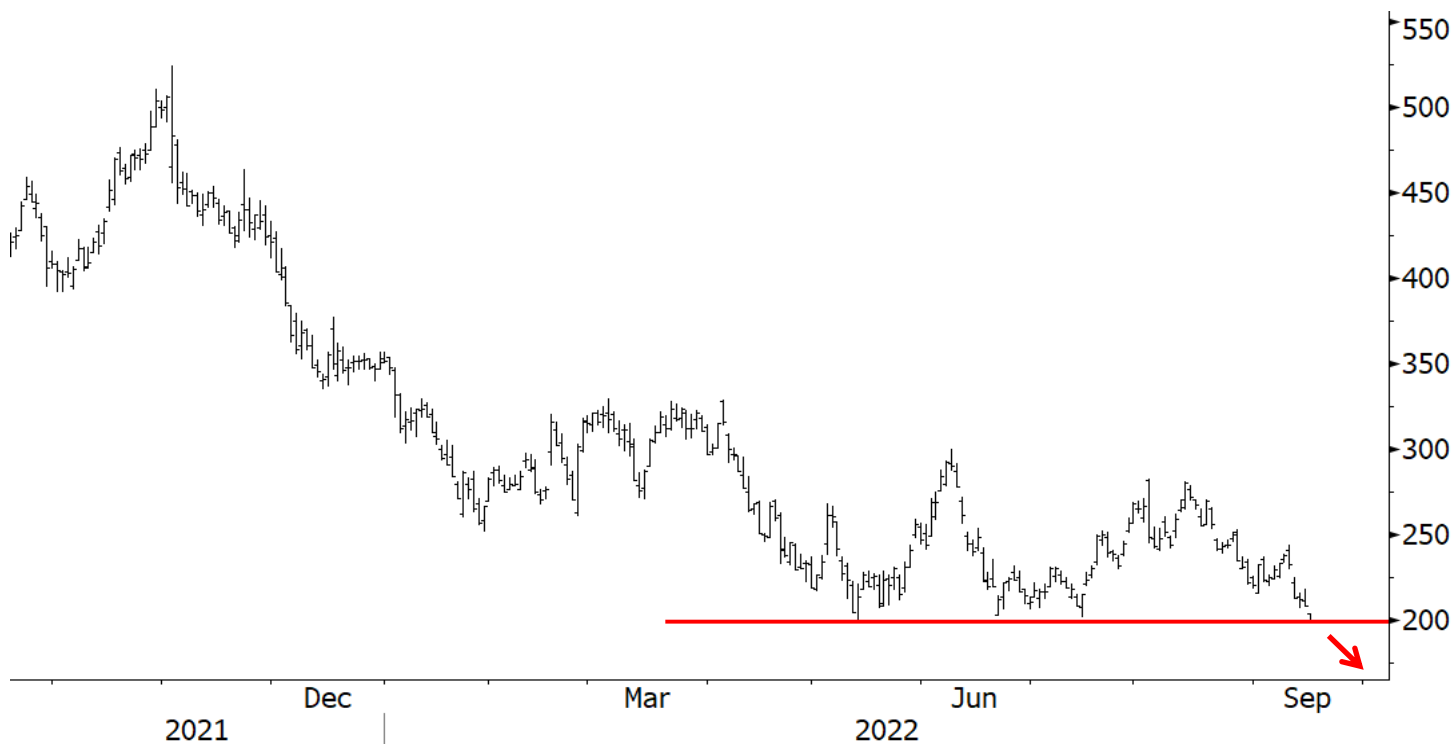
## Hologic (HOLX)



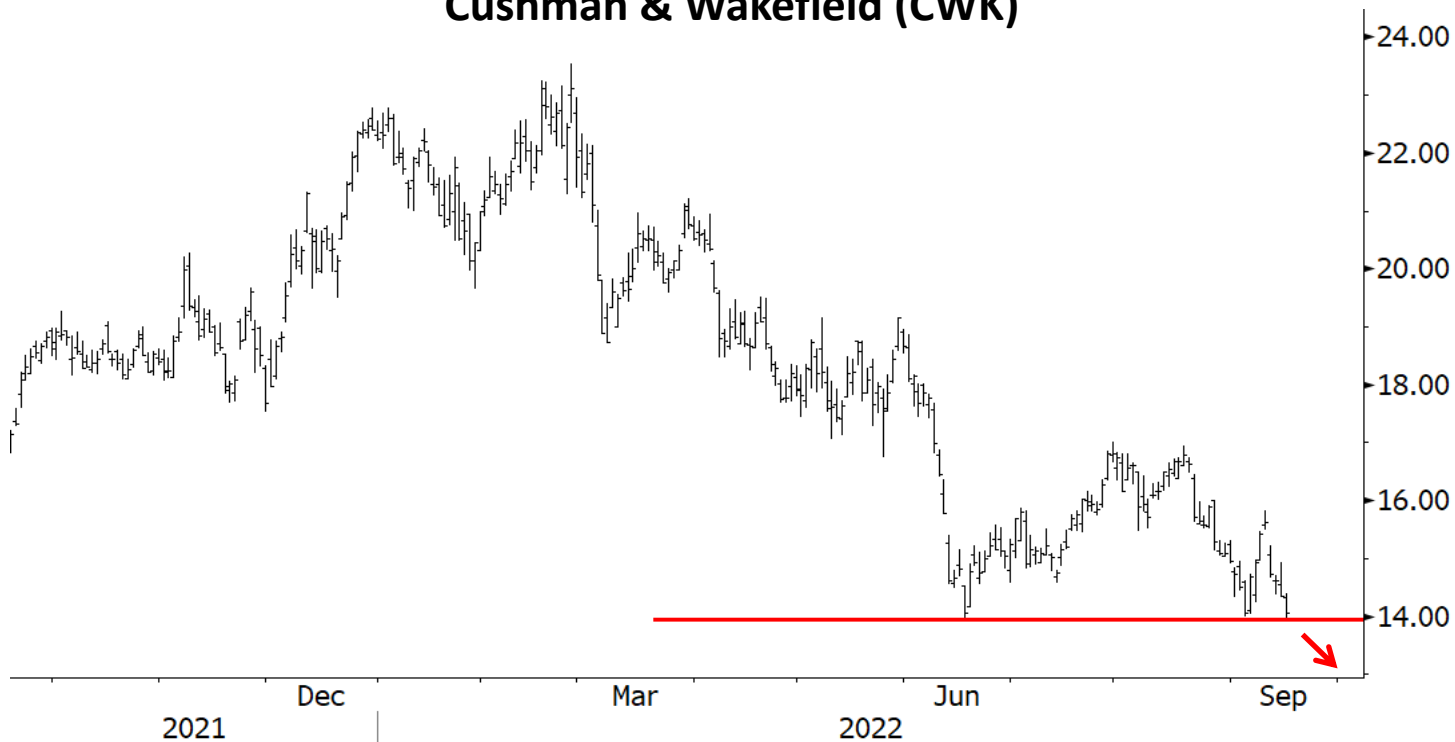
Source: Worth Charting, Bloomberg, FactSet

# MONEY IN MOTION

## Generac (GNRC)



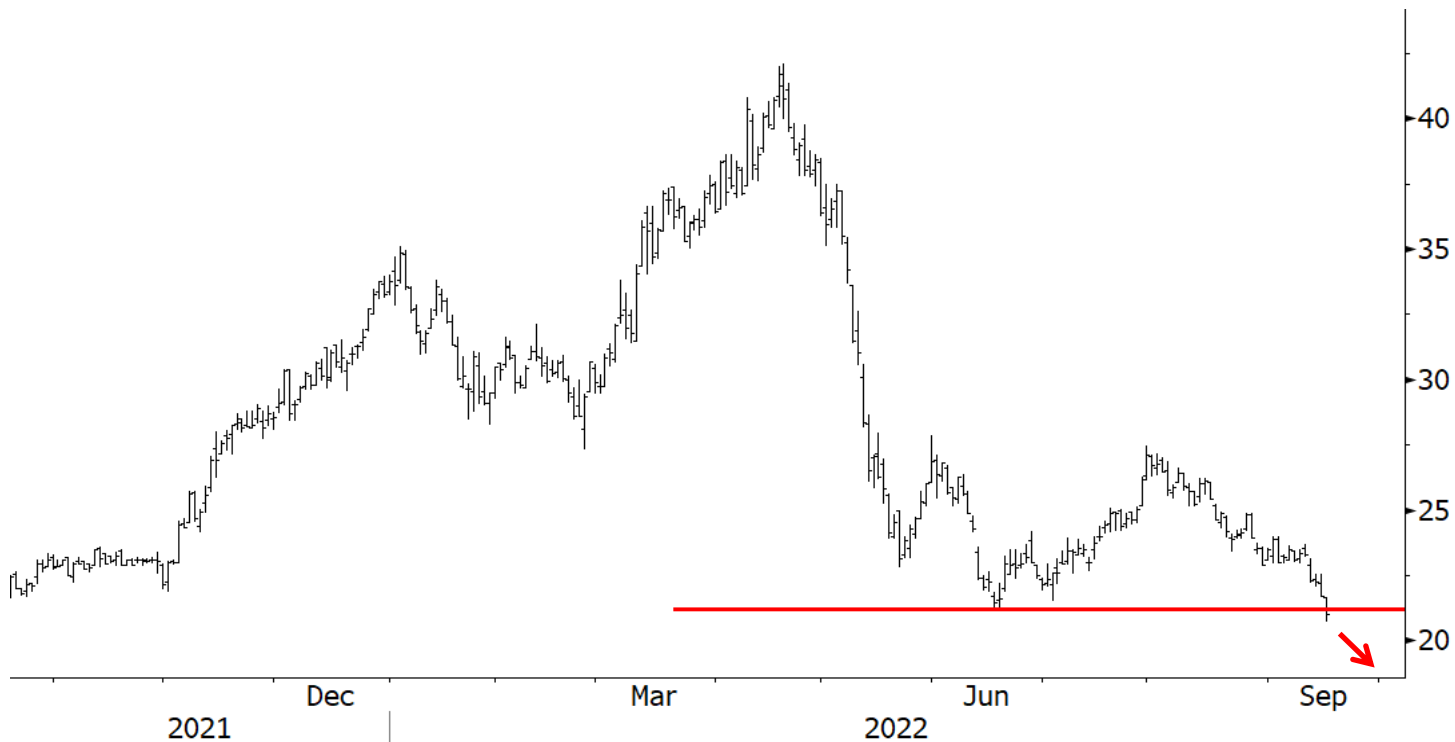
## Cushman & Wakefield (CWK)



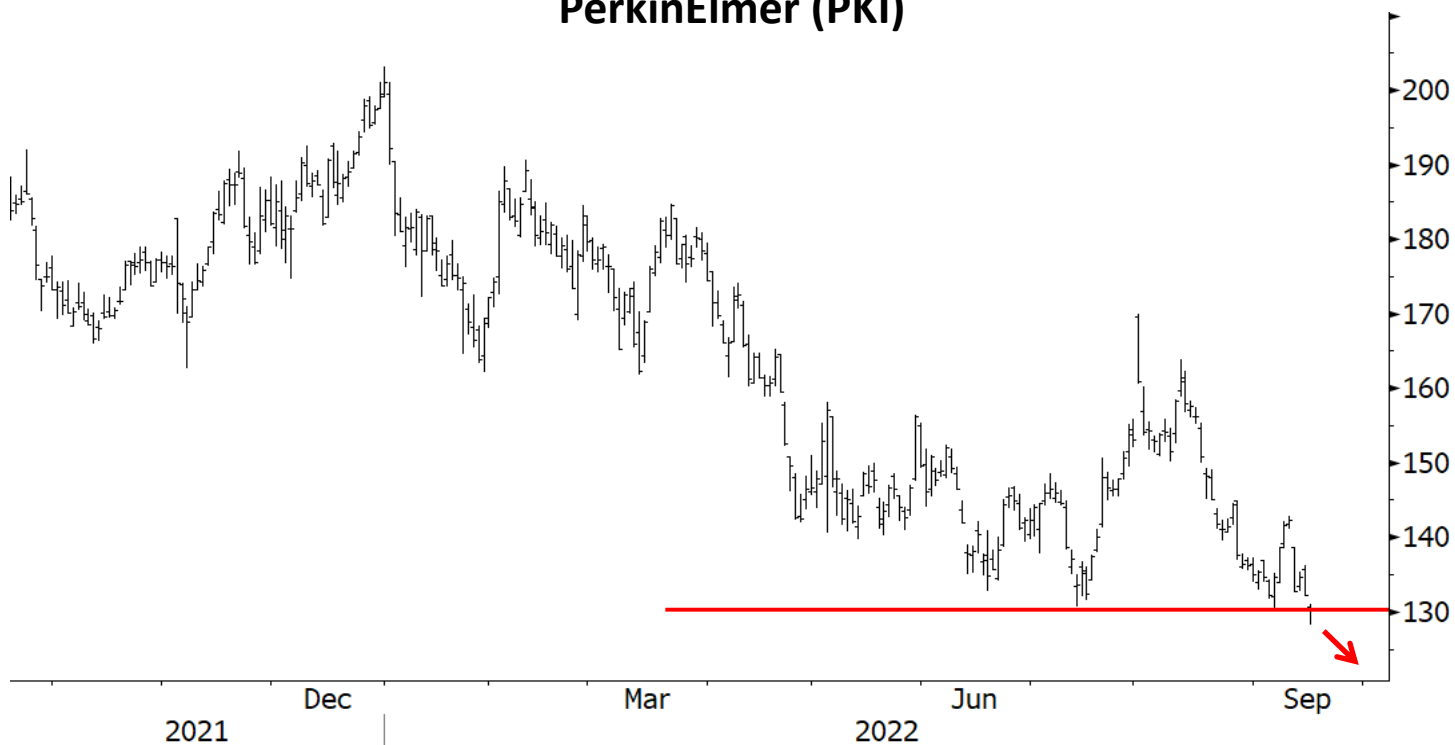
Source: Worth Charting, Bloomberg, FactSet

# MONEY IN MOTION

## Gladstone Land (LAND)



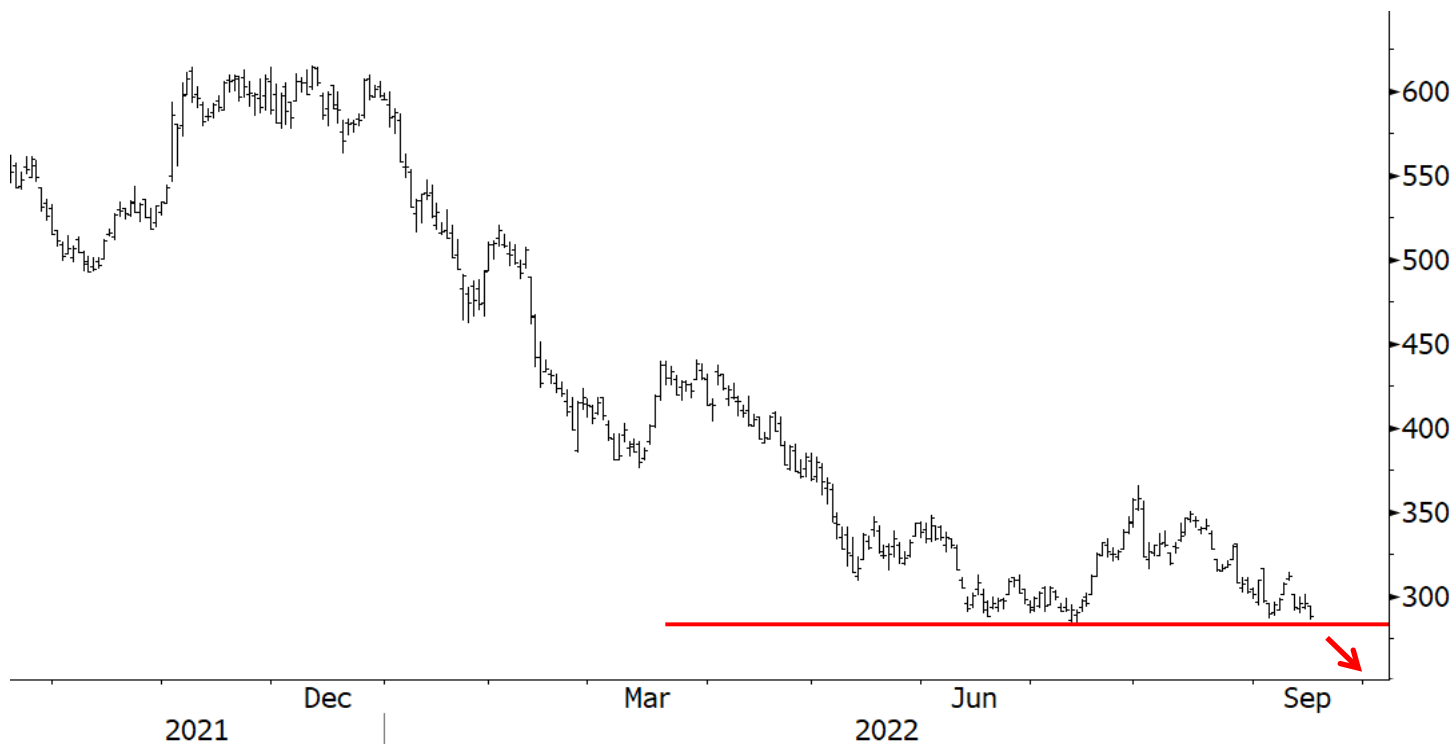
## PerkinElmer (PKI)



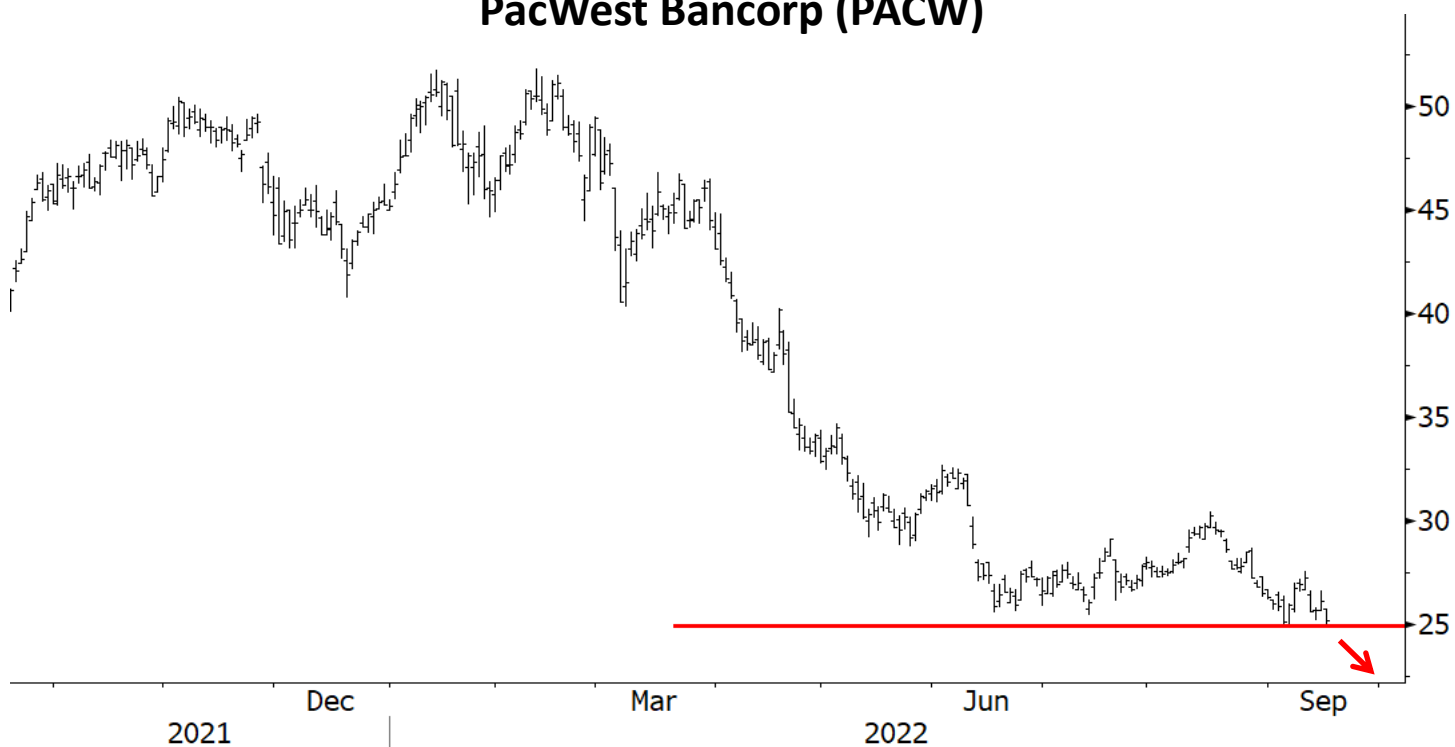
Source: Worth Charting, Bloomberg, FactSet

# MONEY IN MOTION

## Zebra Technologies (ZBRA)



## PacWest Bancorp (PACW)

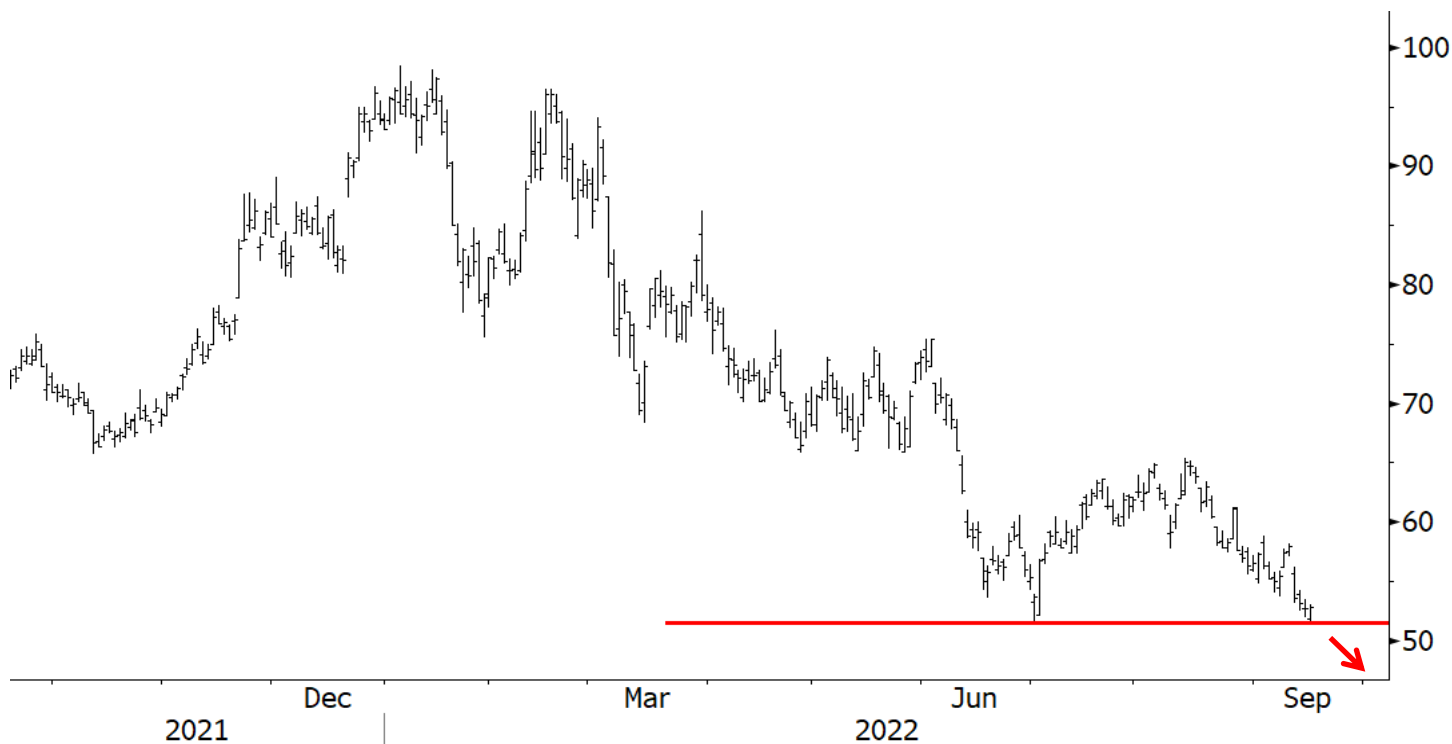


Source: Worth Charting, Bloomberg, FactSet

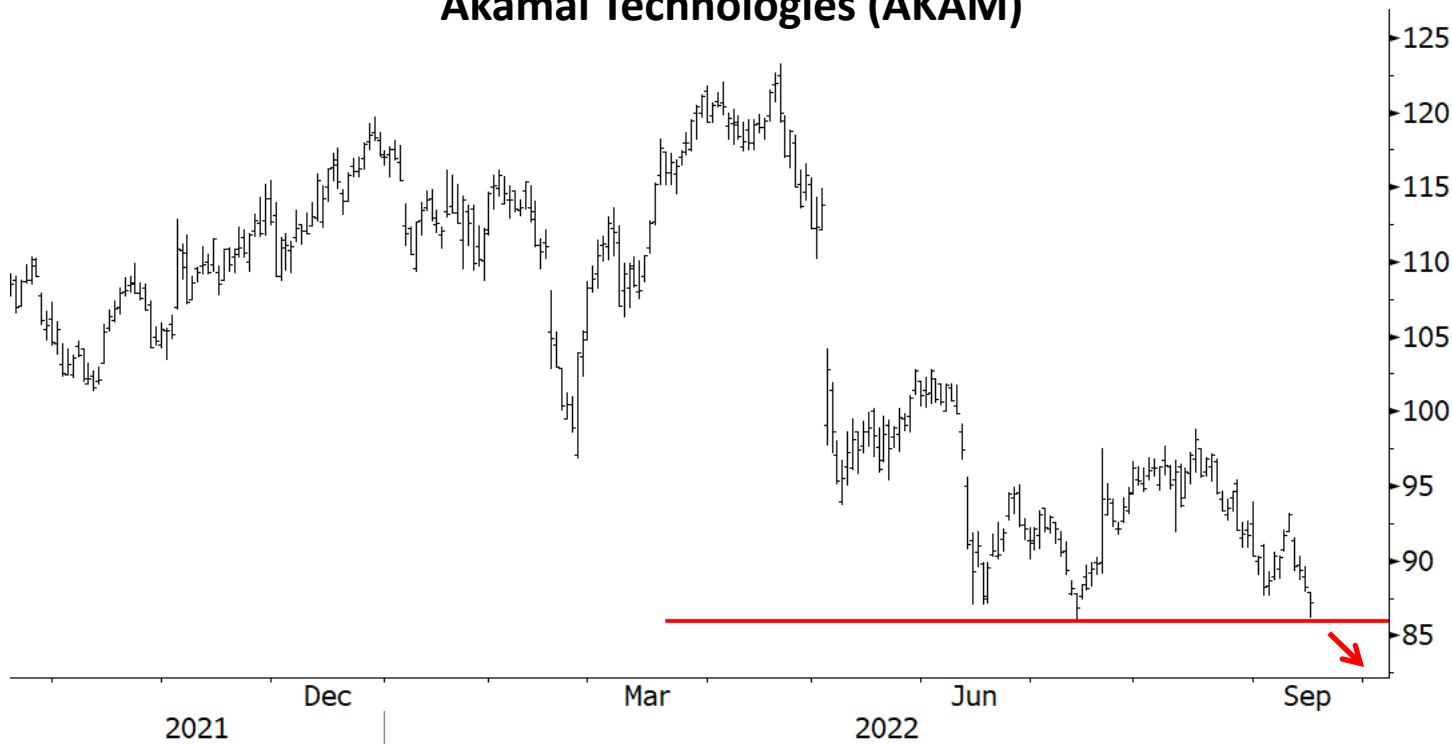


# MONEY IN MOTION

## Micron Technology (MU)



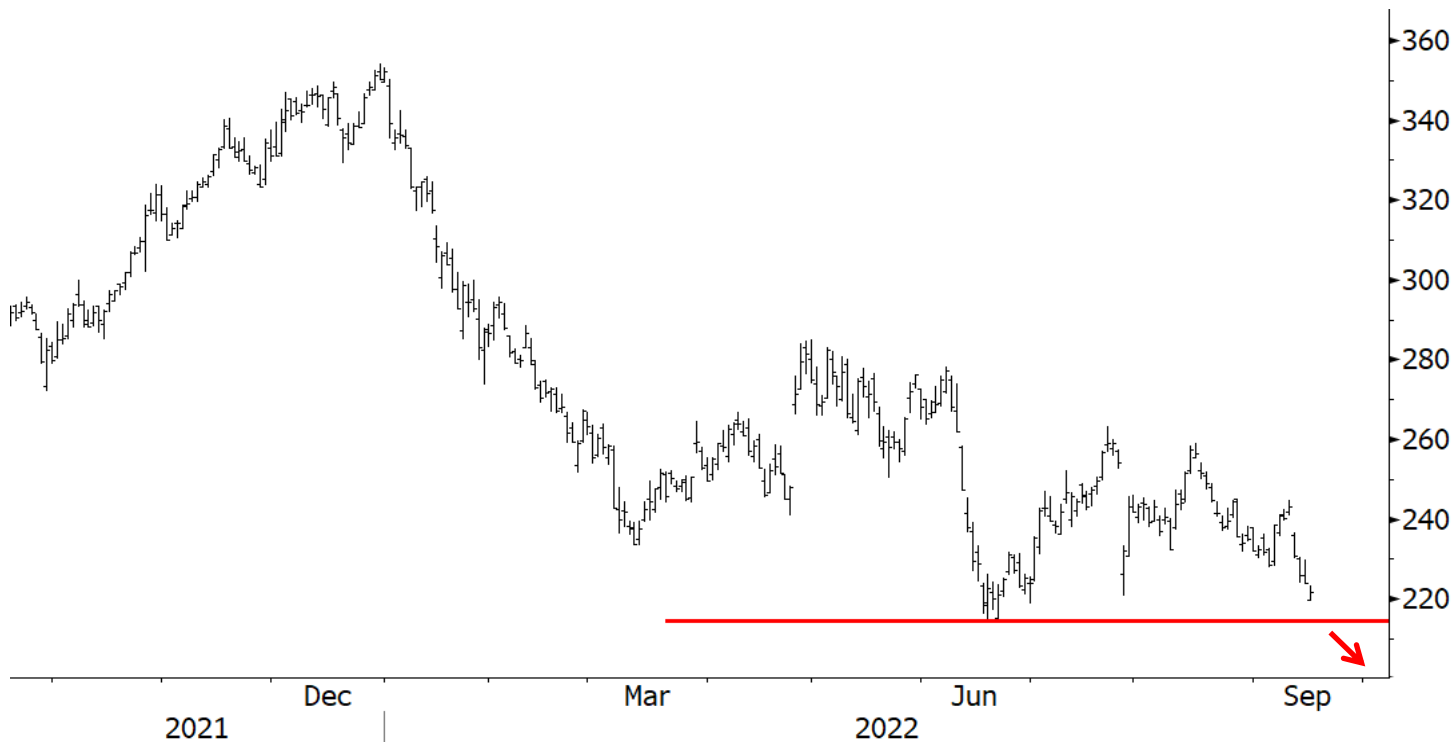
## Akamai Technologies (AKAM)



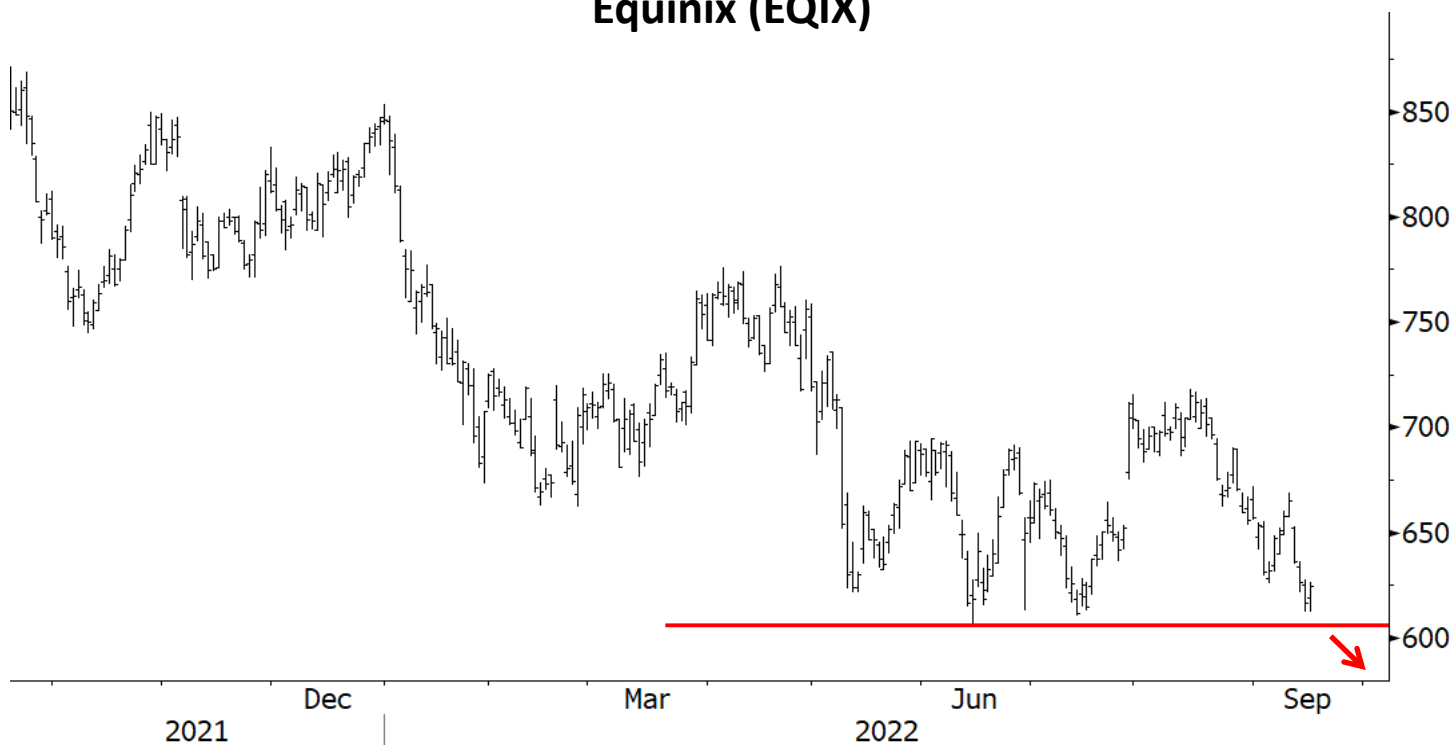
Source: Worth Charting, Bloomberg, FactSet

# MONEY IN MOTION

## Sherwin-Williams (SHW)



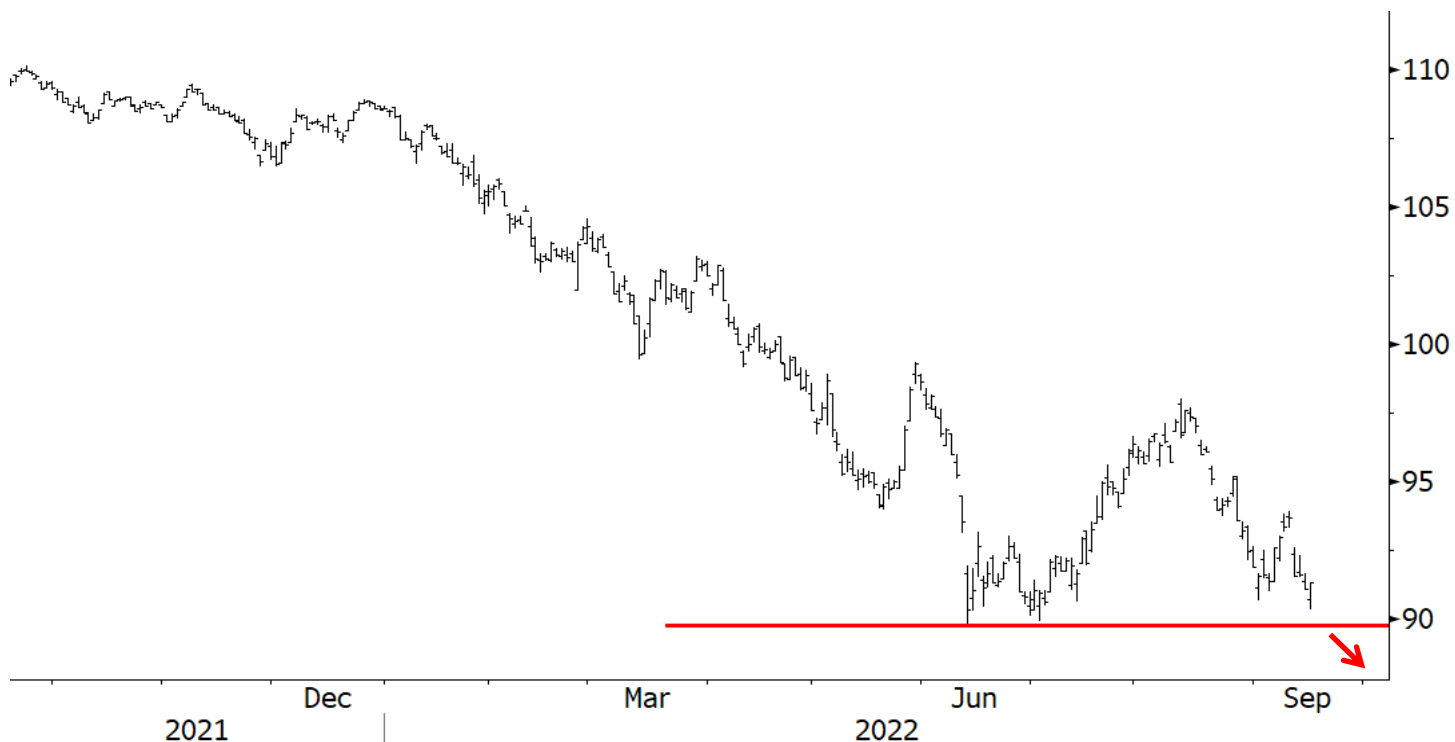
## Equinix (EQIX)



Source: Worth Charting, Bloomberg, FactSet

# MONEY IN MOTION

## SPDR Bloomberg High Yield Bond ETF (JNK)



## iShares iBOXX High Yield Corporate Bond ETF (HYG)



Source: Worth Charting, Bloomberg, FactSet

## MONEY IN MOTION

# Part 3 of 3:

The **Sell List** that follows is representative, rather than exclusive. For every stock singled out, 2-3 others could have been.

The market itself, by inference, is very vulnerable here and now.

The **Sell List** is presented alphabetically (pages 29-37) and then by Sector (pages 38-46).

# See List below

Source: Worth Charting, Bloomberg, FactSet

# MONEY IN MOTION

## Sell List – Alphabetized – Page 1 of 9

| Ticker | Company                         | Price  | Sub Industry Group                           | Sector                 | Market Cap (billions) |
|--------|---------------------------------|--------|--|------------------------|-----------------------|
| AA     | Alcoa Corporation               | 42.46  | Metals & Mining                              | Materials              | 8.08                  |
| AAP    | Advance Auto Parts, Inc.        | 166.8  | Specialty Retail                             | Consumer Discretionary | 10.11                 |
| ABT    | Abbott Laboratories             | 104    | Health Care Equipment & Supplies             | Health Care            | 182.11                |
| ACHR   | Archer Aviation Inc Class A     | 3.01   | Aerospace & Defense                          | Information Technology | 0.73                  |
| ACN    | Accenture Plc Class A           | 272.68 | IT Services                                  | Information Technology | 173.90                |
| ADPT   | Adaptive Biotechnologies Corp.  | 7.63   | Biotechnology                                | Healthcare             | 1.10                  |
| AFRM   | Affirm Holdings, Inc. Class A   | 22.3   | Internet Software/Services                   | Information Technology | 6.51                  |
| AHH    | Armada Hoffer Properties, Inc.  | 12.59  | Equity Real Estate Investment Trusts (REITs) | Real Estate            | 1.12                  |
| AIRC   | Apartment Income REIT Corp      | 41.21  | Equity Real Estate Investment Trusts (REITs) | Real Estate            | 6.28                  |
| AKAM   | Akamai Technologies, Inc.       | 87.16  | IT Services                                  | Information Technology | 14.10                 |
| AKR    | Acadia Realty Trust             | 15.33  | Equity Real Estate Investment Trusts (REITs) | Real Estate            | 1.51                  |
| ALBO   | Albireo Pharma, Inc.            | 17.43  | Pharmaceuticals: Major                       | Healthcare             | 0.34                  |
| ALEC   | Alector, Inc.                   | 9.23   | Biotechnology                                | Healthcare             | 0.77                  |
| ALEX   | Alexander & Baldwin, Inc.       | 17.5   | Equity Real Estate Investment Trusts (REITs) | Real Estate            | 1.29                  |
| ALGN   | Align Technology, Inc.          | 249.02 | Health Care Equipment & Supplies             | Health Care            | 19.11                 |
| ALLE   | Allegion Public Limited Company | 89.69  | Building Products                            | Industrials            | 8.07                  |
| ALLY   | Ally Financial Inc              | 32.48  | Regional Banks                               | Financials             | 10.16                 |
| ALTR   | Altair Engineering Inc. Class A | 47.06  | Packaged Software                            | Information Technology | 3.75                  |
| AMBA   | Ambarella, Inc.                 | 64.93  | Semiconductors                               | Information Technology | 2.49                  |
| AMD    | Advanced Micro Devices, Inc.    | 76.51  | Semiconductors & Semiconductor Equipment     | Information Technology | 124.32                |
| AMPL   | Amplitude Inc Class A           | 15.77  | Packaged Software                            | Information Technology | 1.82                  |
| APAM   | Artisan Partners Asset Mgmt     | 31.84  | Investment Managers                          | Financials             | 2.57                  |
| APG    | APi Group Corporation           | 14.94  | Engineering & Construction                   | Industrials            | 3.61                  |
| APPS   | Digital Turbine, Inc.           | 16.48  | Software                                     | Information Technology | 1.68                  |
| APTV   | Aptiv PLC                       | 93.28  | Auto Components                              | Consumer Discretionary | 26.08                 |
| ASIX   | Advansix, Inc.                  | 33.68  | Chemicals                                    | Materials              | 0.98                  |
| ATKR   | Atkore Inc                      | 79.5   | Electrical Products                          | Industrials            | 3.29                  |
| AVID   | Avid Technology, Inc.           | 24.05  | Technology Hardware Storage & Peripherals    | Information Technology | 1.06                  |
| AVNT   | Avient Corporation              | 36.78  | Chemicals                                    | Materials              | 3.43                  |
| AYI    | Acuity Brands, Inc.             | 155    | Electrical Equipment                         | Industrials            | 5.34                  |
| AZEK   | AZEK Co., Inc. Class A          | 17.96  | Building Products                            | Industrials            | 2.77                  |
| B      | Barnes Group Inc.               | 30.59  | Machinery                                    | Industrials            | 1.57                  |
| BASE   | Couchbase, Inc.                 | 14.55  | Packaged Software                            | Information Technology | 0.67                  |
| BBY    | Best Buy Co., Inc.              | 72.63  | Specialty Retail                             | Consumer Discretionary | 16.58                 |
| BCO    | Brink's Company                 | 53.25  | Commercial Services & Supplies               | Industrials            | 2.51                  |

Source: Worth Charting, Bloomberg, FactSet

# MONEY IN MOTION

## Sell List – Alphabetized – Page 2 of 9

| Ticker | Company                          | Price  | Sub Industry Group                            | Sector                 | Market Cap (billions) |
|--------|----------------------------------|--------|---|------------------------|-----------------------|
| BERY   | Berry Global Group Inc           | 51.82  | Miscellaneous Manufacturing                   | Industrials            | 6.58                  |
| BGS    | B&G Foods, Inc.                  | 19     | Food Products                                 | Consumer Staples       | 1.32                  |
| BHIL   | Benson Hill, Inc.                | 2.86   | Miscellaneous Commercial Services             | Industrials            | 0.58                  |
| BLDE   | Blade Air Mobility, Inc. Class A | 4.79   | Airlines                                      | Industrials            | 0.32                  |
| BLND   | Blend Labs, Inc. Class A         | 2.73   | Information Technology Services               | Information Technology | 0.61                  |
| BMBL   | Bumble, Inc. Class A             | 23.56  | Packaged Software                             | Information Technology | 4.41                  |
| BNL    | Broadstone Net Lease, Inc.       | 19.09  | Real Estate Investment Trusts                 | Financials             | 3.28                  |
| BRC    | Brady Corporation Class A        | 43.23  | Commercial Services & Supplies                | Industrials            | 2.19                  |
| BRK.B  | Berkshire Hathaway Inc. Class B  | 274.81 | Diversified Financial Services                | Financials             | 620.28                |
| BRMK   | Broadmark Realty Capital Inc     | 6.39   | Real Estate Investment Trusts                 | Financials             | 0.84                  |
| BURL   | Burlington Stores, Inc.          | 141.34 | Apparel/Footwear Retail                       | Consumer Discretionary | 9.09                  |
| BVS    | Bioventus, Inc. Class A          | 7.34   | Medical Specialties                           | Healthcare             | 0.57                  |
| BX     | Blackstone Inc.                  | 92.18  | Investment Managers                           | Financials             | 114.04                |
| BYND   | Beyond Meat, Inc.                | 18.29  | Food Retail                                   | Consumer Discretionary | 1.10                  |
| BZH    | Beazer Homes USA, Inc.           | 12.26  | Homebuilding                                  | Consumer Discretionary | 0.39                  |
| CAR    | Avis Budget Group, Inc.          | 147.3  | Road & Rail                                   | Industrials            | 7.42                  |
| CCS    | Century Communities, Inc.        | 45.89  | Household Durables                            | Consumer Discretionary | 1.51                  |
| CG     | Carlyle Group Inc                | 30.89  | Investment Managers                           | Financials             | 11.27                 |
| CGNX   | Cognex Corporation               | 42.3   | Electronic Equipment Instruments & Components | Information Technology | 7.24                  |
| CIM    | Chimera Investment Corporation   | 7.85   | Real Estate Investment Trusts                 | Financials             | 1.82                  |
| CLF    | Cleveland-Cliffs Inc             | 15     | Metals & Mining                               | Materials              | 7.82                  |
| CLVT   | Clarivate PLC                    | 10.57  | Miscellaneous Commercial Services             | Industrials            | 7.09                  |
| CME    | CME Group Inc. Class A           | 191.56 | Capital Markets                               | Financials             | 68.41                 |
| CMRE   | Costamare Inc.                   | 10.33  | Marine Shipping                               | Industrials            | 1.25                  |
| CNDT   | Conduent, Inc.                   | 3.73   | Miscellaneous Commercial Services             | Industrials            | 0.81                  |
| CNK    | Cinemark Holdings, Inc.          | 13.57  | Entertainment                                 | Communication Services | 1.62                  |
| CODI   | Compass Diversified Holdings     | 19.05  | Investment Managers                           | Financials             | 1.41                  |
| COF    | Capital One Financial Corp       | 101.68 | Consumer Finance                              | Financials             | 39.23                 |
| COLM   | Columbia Sportswear Company      | 71     | Textiles Apparel & Luxury Goods               | Consumer Discretionary | 4.51                  |
| CPRI   | Capri Holdings Limited           | 44.49  | Textiles Apparel & Luxury Goods               | Consumer Discretionary | 6.27                  |
| CPT    | Camden Property Trust            | 129    | Equity Real Estate Investment Trusts (REITs)  | Real Estate            | 13.62                 |
| CRI    | Carter's, Inc.                   | 71.58  | Textiles Apparel & Luxury Goods               | Consumer Discretionary | 2.82                  |
| CRL    | Charles River Labs               | 199.71 | Life Sciences Tools & Services                | Health Care            | 10.13                 |
| CRM    | Salesforce, Inc.                 | 151.51 | Software                                      | Information Technology | 152.69                |
| CSTM   | Constellium SE Class A           | 11.45  | Miscellaneous Commercial Services             | Industrials            | 1.73                  |

Source: Worth Charting, Bloomberg, FactSet

# MONEY IN MOTION

## Sell List – Alphabetized – Page 3 of 9

| Ticker | Company                              | Price  | Sub Industry Group                           | Sector                 | Market Cap (billions) |
|--------|--------------------------------------|--------|--|------------------------|-----------------------|
| CTLP   | Cantaloupe, Inc.                     | 4.22   | Regional Banks                               | Financials             | 0.31                  |
| CTLT   | Catalent Inc                         | 89.94  | Pharmaceuticals                              | Health Care            | 15.98                 |
| CUBI   | Customers Bancorp, Inc.              | 32.74  | Banks  | Financials             | 1.09                  |
| CVNA   | Carvana Co. Class A                  | 32.92  | Specialty Stores                             | Consumer Discretionary | 6.34                  |
| CWK    | Cushman & Wakefield Plc              | 14.06  | Real Estate Development                      | Financials             | 3.21                  |
| DAN    | Dana Incorporated                    | 14.39  | Auto Components                              | Consumer Discretionary | 2.12                  |
| DASH   | DoorDash, Inc. Class A               | 59.13  | Internet Software/Services                   | Information Technology | 22.85                 |
| DBRG   | DigitalBridge Group, Inc. Class A    | 16.29  | Real Estate Investment Trusts                | Financials             | 3.51                  |
| DD     | DuPont de Nemours, Inc.              | 53.98  | Chemicals                                    | Materials              | 27.84                 |
| DDOG   | Datadog Inc Class A                  | 91.25  | Packaged Software                            | Information Technology | 29.60                 |
| DFS    | Discover Financial Services          | 100.91 | Consumer Finance                             | Financials             | 27.87                 |
| DGX    | Quest Diagnostics Incorporated       | 124.73 | Health Care Providers & Services             | Health Care            | 14.65                 |
| DH     | Definitive Healthcare Corp. Class A  | 18.27  | Packaged Software                            | Information Technology | 2.70                  |
| DISH   | DISH Network Corporation Class A     | 17.29  | Media  | Communication Services | 8.97                  |
| DNB    | Dun & Bradstreet Holdings Inc        | 14.31  | Packaged Software                            | Information Technology | 6.04                  |
| DOCS   | Doximity, Inc. Class A               | 31.45  | Internet Software/Services                   | Information Technology | 6.05                  |
| DOV    | Dover Corporation                    | 120.91 | Machinery                                    | Industrials            | 17.90                 |
| EBAY   | eBay Inc.                            | 42     | Internet & Direct Marketing Retail           | Consumer Discretionary | 22.79                 |
| ECVT   | Ecovyst Inc                          | 8.42   | Chemicals: Specialty                         | Industrials            | 1.23                  |
| EGP    | EastGroup Properties, Inc.           | 156.46 | Equity Real Estate Investment Trusts (REITs) | Real Estate            | 6.83                  |
| EL     | Estee Lauder Companies Inc. Class A  | 239.38 | Personal Products                            | Consumer Staples       | 85.96                 |
| EMR    | Emerson Electric Co.                 | 78.21  | Electrical Equipment                         | Industrials            | 47.11                 |
| ENR    | Energizer Holdings, Inc.             | 28.12  | Household Products                           | Consumer Staples       | 2.01                  |
| ENTG   | Entegris, Inc.                       | 92.8   | Semiconductors                               | Information Technology | 14.07                 |
| EQIX   | Equinix, Inc.                        | 624.75 | Equity Real Estate Investment Trusts (REITs) | Real Estate            | 56.87                 |
| EVLV   | Evolv Technologies Holdings, Inc.    | 2.28   | Electronic Equipment/Instruments             | Information Technology | 0.32                  |
| EVR    | Evercore Inc. Class A                | 89.7   | Capital Markets                              | Financials             | 3.57                  |
| EVTC   | EVERTEC, Inc.                        | 33.03  | IT Services                                  | Information Technology | 2.21                  |
| EW CZ  | European Wax Center, Inc. Class A    | 17.54  | Other Consumer Services                      | Consumer Discretionary | 1.19                  |
| EXP    | Eagle Materials Inc.                 | 111.43 | Construction Materials                       | Materials              | 4.35                  |
| EXPD   | Expeditors International             | 92.81  | Air Freight & Logistics                      | Industrials            | 15.27                 |
| FAF    | First American Financial Corporation | 50.56  | Insurance                                    | Financials             | 5.33                  |
| FAST   | Fastenal Company                     | 47.36  | Trading Companies & Distributors             | Industrials            | 27.85                 |
| FBHS   | Fortune Brands Home & Security, Inc. | 59.98  | Building Products                            | Industrials            | 7.82                  |
| FIGS   | FIGS, Inc. Class A                   | 9.8    | Apparel/Footwear                             | Consumer Discretionary | 1.61                  |

Source: Worth Charting, Bloomberg, FactSet

# MONEY IN MOTION

## Sell List – Alphabetized – Page 4 of 9

| Ticker | Company                              | Price  | Sub Industry Group                           | Sector                 | Market Cap (billions) |
|--------|--------------------------------------|--------|--|------------------------|-----------------------|
| FIVN   | Five9, Inc.                          | 81.78  | Information Technology Services              | Information Technology | 5.82                  |
| FLS    | Flowserve Corporation                | 27.17  | Machinery                                    | Industrials            | 3.61                  |
| FLT    | FLEETCOR Technologies, Inc.          | 202.56 | IT Services                                  | Information Technology | 15.25                 |
| FRC    | First Republic Bank                  | 141.74 | Banks  | Financials             | 25.85                 |
| FTDR   | Frontdoor, Inc.                      | 22     | Diversified Consumer Services                | Consumer Discretionary | 1.81                  |
| FUL    | H.B. Fuller Company                  | 59.8   | Chemicals                                    | Materials              | 3.28                  |
| GES    | Guess?, Inc.                         | 16.13  | Specialty Retail                             | Consumer Discretionary | 0.91                  |
| GLUE   | Monte Rosa Therapeutics, Inc.        | 7.17   | Biotechnology                                | Healthcare             | 0.35                  |
| GNL    | Global Net Lease Inc                 | 13.27  | Equity Real Estate Investment Trusts (REITs) | Real Estate            | 1.37                  |
| GNRC   | Generac Holdings Inc.                | 200.17 | Electrical Equipment                         | Industrials            | 12.68                 |
| GNTX   | Gentex Corporation                   | 26.18  | Auto Components                              | Consumer Discretionary | 6.25                  |
| GOOGL  | Alphabet Inc. Class A                | 102.8  | Interactive Media & Services                 | Communication Services | 1351.83               |
| GPRO   | GoPro, Inc. Class A                  | 5.65   | Electronics/Appliances                       | Consumer Discretionary | 0.89                  |
| GPS    | Gap, Inc.                            | 9.12   | Specialty Retail                             | Consumer Discretionary | 3.44                  |
| GRPN   | Groupon, Inc.                        | 10.73  | Internet Retail                              | Consumer Discretionary | 0.31                  |
| GVA    | Granite Construction Incorporated    | 27.87  | Construction & Engineering                   | Industrials            | 1.27                  |
| GWRE   | Guidewire Software, Inc.             | 64.72  | Information Technology Services              | Information Technology | 5.28                  |
| HAS    | Hasbro, Inc.                         | 75.8   | Leisure Products                             | Consumer Discretionary | 10.71                 |
| HD     | Home Depot, Inc.                     | 275.97 | Specialty Retail                             | Consumer Discretionary | 286.75                |
| HLMN   | Hillman Solutions Corp.              | 8.08   | Wholesale Distributors                       | Consumer Discretionary | 1.53                  |
| HLTH   | Cue Health Inc.                      | 3.27   | Medical Specialties                          | Healthcare             | 0.49                  |
| HOLX   | Hologic, Inc.                        | 66.82  | Health Care Equipment & Supplies             | Health Care            | 16.65                 |
| HON    | Honeywell International Inc.         | 177.35 | Industrial Conglomerates                     | Industrials            | 120.45                |
| HOUS   | Anywhere Real Estate Inc.            | 9.02   | Real Estate Management & Development         | Real Estate            | 1.05                  |
| HSIC   | Henry Schein, Inc.                   | 71.7   | Health Care Providers & Services             | Health Care            | 9.79                  |
| HUBS   | HubSpot, Inc.                        | 291.57 | Information Technology Services              | Information Technology | 14.02                 |
| IAA    | IAA, Inc.                            | 33.72  | Commercial Services & Supplies               | Industrials            | 4.47                  |
| IDXX   | IDEXX Laboratories, Inc.             | 342.56 | Health Care Equipment & Supplies             | Health Care            | 28.31                 |
| IGT    | International Game Technology PLC    | 17.54  | Casinos/Gaming                               | Consumer Discretionary | 3.71                  |
| ILMN   | Illumina, Inc.                       | 199.88 | Life Sciences Tools & Services               | Health Care            | 31.06                 |
| INFN   | Infinera Corporation                 | 4.94   | Telecommunications Equipment                 | Information Technology | 1.07                  |
| IPG    | Interpublic Group of Companies, Inc. | 27.3   | Media  | Communication Services | 10.85                 |
| ISRG   | Intuitive Surgical, Inc.             | 206.28 | Health Care Equipment & Supplies             | Health Care            | 72.20                 |
| J      | Jacobs Solutions Inc.                | 117.27 | Professional Services                        | Industrials            | 15.39                 |
| JAMF   | Jamf Holding Corp                    | 22.84  | Packaged Software                            | Information Technology | 2.76                  |

Source: Worth Charting, Bloomberg, FactSet



# MONEY IN MOTION

## Sell List – Alphabetized – Page 5 of 9

| Ticker | Company                           | Price  | Sub Industry Group                           | Sector                 | Market Cap (billions) |
|--------|-----------------------------------|--------|--|------------------------|-----------------------|
| JLL    | Jones Lang LaSalle Incorporated   | 162.73 | Real Estate Management & Development         | Real Estate            | 7.89                  |
| JWN    | Nordstrom, Inc.                   | 18.9   | Multiline Retail                             | Consumer Discretionary | 3.10                  |
| KBH    | KB Home                           | 28.37  | Household Durables                           | Consumer Discretionary | 2.54                  |
| KEY    | KeyCorp                           | 17.7   | Banks  | Financials             | 16.67                 |
| KFY    | Korn Ferry                        | 49.28  | Professional Services                        | Industrials            | 2.64                  |
| KHC    | Kraft Heinz Company               | 34.71  | Food Products                                | Consumer Staples       | 42.48                 |
| KMT    | Kennametal Inc.                   | 21.58  | Machinery                                    | Industrials            | 1.82                  |
| KMX    | CarMax, Inc.                      | 84.73  | Specialty Retail                             | Consumer Discretionary | 13.69                 |
| KNX    | Knight-Swift Transportation       | 48.02  | Road & Rail                                  | Industrials            | 7.93                  |
| KURA   | Kura Oncology, Inc.               | 13.2   | Pharmaceuticals: Major                       | Healthcare             | 0.86                  |
| L      | Loews Corporation                 | 53.96  | Insurance                                    | Financials             | 13.26                 |
| LAND   | Gladstone Land Corp.              | 21     | Real Estate Investment Trusts                | Financials             | 0.71                  |
| LEN    | Lennar Corporation Class A        | 75.79  | Household Durables                           | Consumer Discretionary | 22.23                 |
| LESL   | Leslie's, Inc.                    | 13.88  | Specialty Stores                             | Consumer Discretionary | 2.60                  |
| LH     | Laboratory Corporation of America | 223.99 | Health Care Providers & Services             | Health Care            | 20.20                 |
| LICY   | Li-Cycle Holdings Corp.           | 6.03   | Environmental Services                       | Industrials            | 1.08                  |
| LOVE   | Lovesac Company                   | 25.11  | Specialty Stores                             | Consumer Discretionary | 0.39                  |
| LPX    | Louisiana-Pacific Corporation     | 52.52  | Paper & Forest Products                      | Materials              | 4.02                  |
| LRCX   | Lam Research Corporation          | 409.22 | Semiconductors & Semiconductor Equipment     | Information Technology | 56.33                 |
| LSTR   | Landstar System, Inc.             | 141.01 | Road & Rail                                  | Industrials            | 5.33                  |
| LTH    | Life Time Group Holdings, Inc.    | 11.87  | Other Consumer Services                      | Consumer Discretionary | 2.34                  |
| LUV    | Southwest Airlines Co.            | 34.73  | Airlines                                     | Industrials            | 21.35                 |
| M      | Macy's Inc                        | 16.71  | Multiline Retail                             | Consumer Discretionary | 4.60                  |
| MAA    | Mid-America Apartment Communities | 165.95 | Equity Real Estate Investment Trusts (REITs) | Real Estate            | 19.55                 |
| MAC    | Macerich Company                  | 9.08   | Equity Real Estate Investment Trusts (REITs) | Real Estate            | 3.85                  |
| MATX   | Matson, Inc.                      | 69.39  | Marine                                       | Industrials            | 2.66                  |
| MC     | Moelis & Co. Class A              | 39.14  | Investment Banks/Brokers                     | Financials             | 2.78                  |
| MCW    | Mister Car Wash, Inc.             | 9.33   | Other Consumer Services                      | Consumer Discretionary | 2.83                  |
| MD     | Pediatrix Medical Group, Inc.     | 17.58  | Health Care Providers & Services             | Health Care            | 1.51                  |
| MDB    | MongoDB, Inc. Class A             | 220.58 | Packaged Software                            | Information Technology | 15.19                 |
| MDC    | M.D.C. Holdings, Inc.             | 29.38  | Household Durables                           | Consumer Discretionary | 2.13                  |
| MDXG   | MiMedx Group, Inc.                | 3.26   | Biotechnology                                | Healthcare             | 0.37                  |
| META   | Meta Platforms Inc. Class A       | 146.29 | Interactive Media & Services                 | Communication Services | 399.28                |
| MHO    | M/I Homes, Inc.                   | 39.31  | Household Durables                           | Consumer Discretionary | 1.11                  |
| MKC    | McCormick & Company, Incorporated | 79.14  | Food Products                                | Consumer Staples       | 21.12                 |

Source: Worth Charting, Bloomberg, FactSet

# MONEY IN MOTION

## Sell List – Alphabetized – Page 6 of 9

| Ticker | Company                                | Price  | Sub Industry Group                            | Sector                 | Market Cap (billions) |
|--------|--|--------|---|------------------------|-----------------------|
| MRNA   | Moderna, Inc.                          | 137.74 | Biotechnology                                 | Health Care            | 49.83                 |
| MRVL   | Marvell Technology, Inc.               | 46.35  | Semiconductors                                | Information Technology | 39.50                 |
| MSFT   | Microsoft Corporation                  | 244.74 | Software                                      | Information Technology | 1827.71               |
| MSTR   | MicroStrategy Incorporated Class A     | 206.34 | Internet Software/Services                    | Information Technology | 2.32                  |
| MTH    | Meritage Homes Corporation             | 74.28  | Household Durables                            | Consumer Discretionary | 2.78                  |
| MTN    | Vail Resorts, Inc.                     | 222.11 | Hotels/Resorts/Cruiselines                    | Consumer Discretionary | 9.11                  |
| MU     | Micron Technology, Inc.                | 52.85  | Semiconductors & Semiconductor Equipment      | Information Technology | 57.91                 |
| MXL    | MaxLinear, Inc.                        | 34.53  | Semiconductors & Semiconductor Equipment      | Information Technology | 2.74                  |
| NAVI   | Navient Corp                           | 14.16  | Consumer Finance                              | Financials             | 2.03                  |
| NKE    | NIKE, Inc. Class B                     | 104.12 | Textiles Apparel & Luxury Goods               | Consumer Discretionary | 168.18                |
| NKLA   | Nikola Corporation                     | 5.12   | Motor Vehicles                                | Consumer Discretionary | 1.99                  |
| NLOK   | NortonLifeLock Inc.                    | 21.26  | Software                                      | Information Technology | 14.24                 |
| NOW    | ServiceNow, Inc.                       | 425.8  | Software                                      | Information Technology | 86.07                 |
| NSA    | National Storage Affiliates Trust      | 46.72  | Equity Real Estate Investment Trusts (REITs)  | Real Estate            | 5.97                  |
| NSIT   | Insight Enterprises, Inc.              | 84.54  | Electronic Equipment Instruments & Components | Information Technology | 2.99                  |
| NTRS   | Northern Trust Corporation             | 93.13  | Capital Markets                               | Financials             | 19.89                 |
| NVST   | Envista Holdings Corp.                 | 34.3   | Health Care Equipment & Supplies              | Health Care            | 5.69                  |
| NWL    | Newell Brands Inc                      | 16.3   | Household Durables                            | Consumer Discretionary | 6.79                  |
| OLED   | Universal Display Corporation          | 101.69 | Semiconductors & Semiconductor Equipment      | Information Technology | 4.92                  |
| OLPX   | Olaplex Holdings, Inc.                 | 11.67  | Household/Personal Care                       | Consumer Discretionary | 7.67                  |
| OMCL   | Omicell, Inc.                          | 95.27  | Health Care Equipment & Supplies              | Health Care            | 4.13                  |
| OMF    | OneMain Holdings, Inc.                 | 35.04  | Finance/Rental/Leasing                        | Financials             | 4.40                  |
| ONON   | On Holding AG Class A                  | 18.1   | Apparel/Footwear                              | Consumer Discretionary | 5.63                  |
| ONTO   | Onto Innovation, Inc.                  | 68.3   | Semiconductors & Semiconductor Equipment      | Information Technology | 3.42                  |
| ORI    | Old Republic International Corporation | 21.83  | Insurance                                     | Financials             | 6.87                  |
| OSK    | Oshkosh Corp                           | 77.59  | Machinery                                     | Industrials            | 5.19                  |
| OSTK   | Overstock.com, Inc.                    | 26.49  | Internet Retail                               | Consumer Discretionary | 1.22                  |
| OTIS   | Otis Worldwide Corporation             | 67.8   | Machinery                                     | Industrials            | 28.85                 |
| PACW   | PacWest Bancorp                        | 25.21  | Banks   | Financials             | 3.05                  |
| PATH   | UiPath, Inc. Class A                   | 14.03  | Packaged Software                             | Information Technology | 7.76                  |
| PATK   | Patrick Industries, Inc.               | 47.83  | Auto Components                               | Consumer Discretionary | 1.10                  |
| PBH    | Prestige Consumer Healthcare Inc       | 51.5   | Pharmaceuticals                               | Health Care            | 2.59                  |
| PCH    | PotlatchDeltic Corporation             | 43.54  | Equity Real Estate Investment Trusts (REITs)  | Real Estate            | 3.59                  |
| PD     | PagerDuty, Inc.                        | 23.56  | Packaged Software                             | Information Technology | 2.15                  |
| PGRE   | Paramount Group, Inc.                  | 6.98   | Real Estate Investment Trusts                 | Financials             | 1.69                  |

Source: Worth Charting, Bloomberg, FactSet

# MONEY IN MOTION

## Sell List – Alphabetized – Page 7 of 9

| Ticker | Company                             | Price  | Sub Industry Group                            | Sector                 | Market Cap (billions) |
|--------|-------------------------------------|--------|---|------------------------|-----------------------|
| PIPR   | Piper Sandler Companies             | 106.48 | Capital Markets                               | Financials             | 1.93                  |
| PKI    | PerkinElmer, Inc.                   | 130.14 | Life Sciences Tools & Services                | Health Care            | 16.43                 |
| PLTR   | Palantir Technologies Inc. Class A  | 7.78   | Packaged Software                             | Information Technology | 16.20                 |
| PNR    | Pentair plc                         | 42.84  | Machinery                                     | Industrials            | 7.15                  |
| POOL   | Pool Corporation                    | 331.63 | Distributors                                  | Consumer Discretionary | 13.37                 |
| POWW   | AMMO Inc                            | 3.47   | Aerospace & Defense                           | Information Technology | 0.41                  |
| PRA    | ProAssurance Corporation            | 20.88  | Insurance                                     | Financials             | 1.14                  |
| PRAA   | PRA Group, Inc.                     | 35.73  | Consumer Finance                              | Financials             | 1.39                  |
| PRU    | Prudential Financial, Inc.          | 91.92  | Insurance                                     | Financials             | 35.18                 |
| PVH    | PVH Corp.                           | 54.41  | Textiles Apparel & Luxury Goods               | Consumer Discretionary | 3.59                  |
| PZZA   | Papa John's International, Inc.     | 79     | Hotels Restaurants & Leisure                  | Consumer Discretionary | 2.74                  |
| QTWO   | Q2 Holdings, Inc.                   | 37.68  | Information Technology Services               | Information Technology | 2.12                  |
| RARE   | Ultragenyx Pharmaceutical, Inc.     | 46.03  | Pharmaceuticals: Major                        | Healthcare             | 3.20                  |
| REG    | Regency Centers Corporation         | 58.99  | Equity Real Estate Investment Trusts (REITs)  | Real Estate            | 10.10                 |
| REXR   | Rexford Industrial Realty, Inc.     | 58.51  | Equity Real Estate Investment Trusts (REITs)  | Real Estate            | 9.92                  |
| RHI    | Robert Half International Inc.      | 76.71  | Professional Services                         | Industrials            | 8.56                  |
| RITM   | Rithm Capital Corp.                 | 8.98   | Real Estate Investment Trusts                 | Financials             | 4.20                  |
| RPT    | RPT Realty                          | 9.28   | Equity Real Estate Investment Trusts (REITs)  | Real Estate            | 0.78                  |
| RUSHA  | Rush Enterprises, Inc. Class A      | 44.55  | Specialty Stores                              | Consumer Discretionary | 2.58                  |
| RVLV   | Revolve Group, Inc Class A          | 24.59  | Internet Retail                               | Consumer Discretionary | 1.86                  |
| SAFE   | Safehold Inc.                       | 36.09  | Equity Real Estate Investment Trusts (REITs)  | Real Estate            | 2.26                  |
| SB     | Safe Bulkers, Inc.                  | 3.05   | Marine Shipping                               | Industrials            | 0.36                  |
| SBNY   | Signature Bank                      | 171.91 | Banks   | Financials             | 10.84                 |
| SGRY   | Surgery Partners, Inc.              | 27.51  | Hospital/Nursing Management                   | Healthcare             | 2.44                  |
| SHW    | Sherwin-Williams Company            | 221.56 | Chemicals                                     | Materials              | 57.83                 |
| SITC   | SITE Centers Corp.                  | 12.83  | Equity Real Estate Investment Trusts (REITs)  | Real Estate            | 2.72                  |
| SITE   | SiteOne Landscape Supply, Inc.      | 113.67 | Trucks/Construction/Farm Machinery            | Industrials            | 5.13                  |
| SIVB   | SVB Financial Group                 | 362.42 | Banks   | Financials             | 21.57                 |
| SKIN   | Beauty Health Company Class A       | 11.98  | Medical Specialties                           | Healthcare             | 1.83                  |
| SKT    | Tanger Factory Outlet Centers, Inc. | 15.2   | Equity Real Estate Investment Trusts (REITs)  | Real Estate            | 1.59                  |
| SLDP   | Solid Power, Inc. Class A           | 6.12   | Electrical Products                           | Industrials            | 1.09                  |
| SNCY   | Sun Country Airlines Holdings, Inc. | 17.02  | Airlines                                      | Industrials            | 0.99                  |
| SNX    | TD SYNNEX Corporation               | 90.09  | Electronic Equipment Instruments & Components | Information Technology | 8.78                  |
| SPGI   | S&P Global, Inc.                    | 346.07 | Capital Markets                               | Financials             | 114.79                |
| SPOT   | Spotify Technology SA               | 100.34 | Internet Software/Services                    | Information Technology | 19.31                 |

Source: Worth Charting, Bloomberg, FactSet

# MONEY IN MOTION

## Sell List – Alphabetized – Page 8 of 9

| Ticker | Company                                   | Price  | Sub Industry Group                           | Sector                 | Market Cap (billions) |
|--------|---|--------|--|------------------------|-----------------------|
| SPR    | Spirit AeroSystems Holdings, Inc. Class A | 25.8   | Aerospace & Defense                          | Information Technology | 2.66                  |
| SQ     | Block, Inc. Class A                       | 64.89  | Information Technology Services              | Information Technology | 37.78                 |
| SQSP   | Squarespace, Inc. Class A                 | 20.98  | Information Technology Services              | Information Technology | 3.08                  |
| SSTK   | Shutterstock, Inc.                        | 54.61  | Interactive Media & Services                 | Communication Services | 1.96                  |
| ST     | Sensata Technologies Holding PLC          | 40.05  | Electronic Equipment/Instruments             | Information Technology | 6.36                  |
| STE    | STERIS Plc                                | 193.72 | Health Care Equipment & Supplies             | Health Care            | 19.02                 |
| SUI    | Sun Communities, Inc.                     | 152.43 | Real Estate Investment Trusts                | Financials             | 18.56                 |
| SUMO   | Sumo Logic, Inc.                          | 8.16   | Packaged Software                            | Information Technology | 0.96                  |
| SXT    | Sensient Technologies Corporation         | 74.3   | Chemicals                                    | Materials              | 3.18                  |
| SYNA   | Synaptics Incorporated                    | 107.93 | Semiconductors & Semiconductor Equipment     | Information Technology | 4.26                  |
| T      | AT&T Inc.                                 | 16.74  | Diversified Telecommunication Services       | Communication Services | 119.40                |
| TBK    | Triumph Bancorp, Inc.                     | 61.16  | Banks  | Financials             | 1.49                  |
| TECH   | Bio-Techne Corporation                    | 307.59 | Life Sciences Tools & Services               | Health Care            | 11.95                 |
| TENB   | Tenable Holdings, Inc.                    | 37.21  | Packaged Software                            | Information Technology | 4.30                  |
| TNL    | Travel + Leisure Co.                      | 40.61  | Hotels Restaurants & Leisure                 | Consumer Discretionary | 3.43                  |
| TOL    | Toll Brothers, Inc.                       | 43.66  | Household Durables                           | Consumer Discretionary | 5.06                  |
| TPH    | Tri Pointe Homes, Inc.                    | 16.18  | Household Durables                           | Consumer Discretionary | 1.68                  |
| TRN    | Trinity Industries, Inc.                  | 22.92  | Machinery                                    | Industrials            | 1.91                  |
| TROW   | T. Rowe Price Group                       | 110.13 | Capital Markets                              | Financials             | 25.89                 |
| TSCO   | Tractor Supply Company                    | 190.02 | Specialty Retail                             | Consumer Discretionary | 21.31                 |
| TTCF   | Tattooed Chef Inc Class A                 | 5.85   | Food: Major Diversified                      | Consumer Discretionary | 0.47                  |
| TW     | Tradeweb Markets, Inc. Class A            | 64.36  | Investment Banks/Brokers                     | Financials             | 14.69                 |
| U      | Unity Software, Inc.                      | 35.54  | Packaged Software                            | Information Technology | 11.08                 |
| UA     | Under Armour, Inc. Class C                | 7.31   | Textiles Apparel & Luxury Goods              | Consumer Discretionary | 3.65                  |
| UCTT   | Ultra Clean Holdings, Inc.                | 27.56  | Semiconductors & Semiconductor Equipment     | Information Technology | 1.25                  |
| UDR    | UDR, Inc.                                 | 44.64  | Equity Real Estate Investment Trusts (REITs) | Real Estate            | 22.27                 |
| UNVR   | Univar Solutions Inc.                     | 23.69  | Trading Companies & Distributors             | Industrials            | 4.07                  |
| UPWK   | Upwork, Inc.                              | 16     | Packaged Software                            | Information Technology | 2.00                  |
| USB    | U.S. Bancorp                              | 45.87  | Banks  | Financials             | 68.59                 |
| V      | Visa Inc. Class A                         | 193.3  | IT Services                                  | Information Technology | 400.17                |
| VSTO   | Vista Outdoor Inc                         | 27.08  | Leisure Products                             | Consumer Discretionary | 1.60                  |
| VTRS   | Viatis, Inc.                              | 9.3    | Pharmaceuticals                              | Health Care            | 11.22                 |
| VVV    | Valvoline, Inc.                           | 27.26  | Chemicals                                    | Materials              | 4.89                  |
| W      | Wayfair, Inc. Class A                     | 45.2   | Specialty Stores                             | Consumer Discretionary | 4.90                  |
| WAL    | Western Alliance Bancorp                  | 71.7   | Regional Banks                               | Financials             | 7.92                  |

Source: Worth Charting, Bloomberg, FactSet

## MONEY IN MOTION

### Sell List – Alphabetized – Page 9 of 9

| Ticker | Company                                | Price  | Sub Industry Group                            | Sector                 | Market Cap (billions) |
|--------|--|--------|---|------------------------|-----------------------|
| WAT    | Waters Corporation                     | 283.93 | Life Sciences Tools & Services                | Health Care            | 17.33                 |
| WEBR   | Weber, Inc. Class A                    | 6.4    | Electronics/Appliances                        | Consumer Discretionary | 1.88                  |
| WETF   | WisdomTree Investments, Inc.           | 4.97   | Capital Markets                               | Financials             | 0.74                  |
| WH     | Wyndham Hotels & Resorts, Inc.         | 64.59  | Hotels Restaurants & Leisure                  | Consumer Discretionary | 5.99                  |
| WHR    | Whirlpool Corporation                  | 145.06 | Household Durables                            | Consumer Discretionary | 8.02                  |
| WLK    | Westlake Corporation                   | 90.85  | Chemicals: Specialty                          | Industrials            | 11.83                 |
| WOOF   | Petco Health & Wellness Company        | 14.41  | Internet Retail                               | Consumer Discretionary | 3.84                  |
| WST    | West Pharmaceutical Services, Inc.     | 268.06 | Life Sciences Tools & Services                | Health Care            | 19.89                 |
| WWW    | Wolverine World Wide, Inc.             | 18.62  | Textiles Apparel & Luxury Goods               | Consumer Discretionary | 1.52                  |
| XPO    | XPO Logistics, Inc.                    | 47.17  | Road & Rail                                   | Industrials            | 5.47                  |
| YOU    | Clear Secure, Inc. Class A             | 23.26  | Packaged Software                             | Information Technology | 3.59                  |
| Z      | Zillow Group, Inc. Class C             | 34.16  | Information Technology Services               | Information Technology | 7.95                  |
| ZBRA   | Zebra Technologies Corporation Class A | 288.52 | Electronic Equipment Instruments & Components | Information Technology | 15.09                 |
| ZD     | Ziff Davis, Inc.                       | 73.84  | Interactive Media & Services                  | Communication Services | 3.52                  |
| ZNTL   | Zentalis Pharmaceuticals, Inc.         | 23.86  | Biotechnology                                 | Healthcare             | 1.29                  |
| ZTS    | Zoetis, Inc. Class A                   | 157.3  | Pharmaceuticals                               | Health Care            | 73.62                 |
| ZWS    | Zurn Elkay Water Solutions Corporation | 26.08  | Industrial Machinery                          | Industrials            | 4.74                  |

Source: Worth Charting, Bloomberg, FactSet

# MONEY IN MOTION

## Sell List – By Sector – Page 1 of 9

| Ticker                        | Company                              | Price  | Sub Industry Group                     | Sector                 | Market Cap (billions) |
|-------------------------------|--------------------------------------|--------|--|------------------------|-----------------------|
| <b>Communication Services</b> |                                      |        |  |                        |                       |
| CNK                           | Cinemark Holdings, Inc.              | 13.57  | Entertainment                          | Communication Services | 1.62                  |
| DISH                          | DISH Network Corporation Class A     | 17.29  | Media                                  | Communication Services | 8.97                  |
| GOOGL                         | Alphabet Inc. Class A                | 102.8  | Interactive Media & Services           | Communication Services | 1351.83               |
| IPG                           | Interpublic Group of Companies, Inc. | 27.3   | Media                                  | Communication Services | 10.85                 |
| META                          | Meta Platforms Inc. Class A          | 146.29 | Interactive Media & Services           | Communication Services | 399.28                |
| SSTK                          | Shutterstock, Inc.                   | 54.61  | Interactive Media & Services           | Communication Services | 1.96                  |
| T                             | AT&T Inc.                            | 16.74  | Diversified Telecommunication Services | Communication Services | 119.40                |
| ZD                            | Ziff Davis, Inc.                     | 73.84  | Interactive Media & Services           | Communication Services | 3.52                  |
| <b>Consumer Discretionary</b> |                                      |        |  |                        |                       |
| AAP                           | Advance Auto Parts, Inc.             | 166.8  | Specialty Retail                       | Consumer Discretionary | 10.11                 |
| APTIV                         | Aptiv PLC                            | 93.28  | Auto Components                        | Consumer Discretionary | 26.08                 |
| BBY                           | Best Buy Co., Inc.                   | 72.63  | Specialty Retail                       | Consumer Discretionary | 16.58                 |
| BURL                          | Burlington Stores, Inc.              | 141.34 | Apparel/Footwear Retail                | Consumer Discretionary | 9.09                  |
| BYND                          | Beyond Meat, Inc.                    | 18.29  | Food Retail                            | Consumer Discretionary | 1.10                  |
| BZH                           | Beazer Homes USA, Inc.               | 12.26  | Homebuilding                           | Consumer Discretionary | 0.39                  |
| CCS                           | Century Communities, Inc.            | 45.89  | Household Durables                     | Consumer Discretionary | 1.51                  |
| COLM                          | Columbia Sportswear Company          | 71     | Textiles Apparel & Luxury Goods        | Consumer Discretionary | 4.51                  |
| CPRI                          | Capri Holdings Limited               | 44.49  | Textiles Apparel & Luxury Goods        | Consumer Discretionary | 6.27                  |
| CRI                           | Carter's, Inc.                       | 71.58  | Textiles Apparel & Luxury Goods        | Consumer Discretionary | 2.82                  |
| CVNA                          | Carvana Co. Class A                  | 32.92  | Specialty Stores                       | Consumer Discretionary | 6.34                  |
| DAN                           | Dana Incorporated                    | 14.39  | Auto Components                        | Consumer Discretionary | 2.12                  |
| EBAY                          | eBay Inc.                            | 42     | Internet & Direct Marketing Retail     | Consumer Discretionary | 22.79                 |
| EW CZ                         | European Wax Center, Inc. Class A    | 17.54  | Other Consumer Services                | Consumer Discretionary | 1.19                  |
| FIGS                          | FIGS, Inc. Class A                   | 9.8    | Apparel/Footwear                       | Consumer Discretionary | 1.61                  |
| FTDR                          | Frontdoor, Inc.                      | 22     | Diversified Consumer Services          | Consumer Discretionary | 1.81                  |
| GES                           | Guess?, Inc.                         | 16.13  | Specialty Retail                       | Consumer Discretionary | 0.91                  |
| GNTX                          | Gentex Corporation                   | 26.18  | Auto Components                        | Consumer Discretionary | 6.25                  |
| GPRO                          | GoPro, Inc. Class A                  | 5.65   | Electronics/Appliances                 | Consumer Discretionary | 0.89                  |
| GPS                           | Gap, Inc.                            | 9.12   | Specialty Retail                       | Consumer Discretionary | 3.44                  |
| GRPN                          | Groupon, Inc.                        | 10.73  | Internet Retail                        | Consumer Discretionary | 0.31                  |
| HAS                           | Hasbro, Inc.                         | 75.8   | Leisure Products                       | Consumer Discretionary | 10.71                 |
| HD                            | Home Depot, Inc.                     | 275.97 | Specialty Retail                       | Consumer Discretionary | 286.75                |
| HLMN                          | Hillman Solutions Corp.              | 8.08   | Wholesale Distributors                 | Consumer Discretionary | 1.53                  |

Source: Worth Charting, Bloomberg, FactSet

# MONEY IN MOTION

## Sell List – By Sector – Page 2 of 9

| Ticker | Company                           | Price  | Sub Industry Group              | Sector                 | Market Cap (billions) |
|--------|-----------------------------------|--------|---------------------------------|------------------------|-----------------------|
| IGT    | International Game Technology PLC | 17.54  | Casinos/Gaming                  | Consumer Discretionary | 3.71                  |
| JWN    | Nordstrom, Inc.                   | 18.9   | Multiline Retail                | Consumer Discretionary | 3.10                  |
| KBH    | KB Home                           | 28.37  | Household Durables              | Consumer Discretionary | 2.54                  |
| KMX    | CarMax, Inc.                      | 84.73  | Specialty Retail                | Consumer Discretionary | 13.69                 |
| LEN    | Lennar Corporation Class A        | 75.79  | Household Durables              | Consumer Discretionary | 22.23                 |
| LESL   | Leslie's, Inc.                    | 13.88  | Specialty Stores                | Consumer Discretionary | 2.60                  |
| LOVE   | Lovesac Company                   | 25.11  | Specialty Stores                | Consumer Discretionary | 0.39                  |
| LTH    | Life Time Group Holdings, Inc.    | 11.87  | Other Consumer Services         | Consumer Discretionary | 2.34                  |
| M      | Macy's Inc                        | 16.71  | Multiline Retail                | Consumer Discretionary | 4.60                  |
| MCW    | Mister Car Wash, Inc.             | 9.33   | Other Consumer Services         | Consumer Discretionary | 2.83                  |
| MDC    | M.D.C. Holdings, Inc.             | 29.38  | Household Durables              | Consumer Discretionary | 2.13                  |
| MHO    | M/I Homes, Inc.                   | 39.31  | Household Durables              | Consumer Discretionary | 1.11                  |
| MTH    | Meritage Homes Corporation        | 74.28  | Household Durables              | Consumer Discretionary | 2.78                  |
| MTN    | Vail Resorts, Inc.                | 222.11 | Hotels/Resorts/Cruiselines      | Consumer Discretionary | 9.11                  |
| NKE    | NIKE, Inc. Class B                | 104.12 | Textiles Apparel & Luxury Goods | Consumer Discretionary | 168.18                |
| NKLA   | Nikola Corporation                | 5.12   | Motor Vehicles                  | Consumer Discretionary | 1.99                  |
| NWL    | Newell Brands Inc                 | 16.3   | Household Durables              | Consumer Discretionary | 6.79                  |
| OLPX   | Olaplex Holdings, Inc.            | 11.67  | Household/Personal Care         | Consumer Discretionary | 7.67                  |
| ONON   | On Holding AG Class A             | 18.1   | Apparel/Footwear                | Consumer Discretionary | 5.63                  |
| OSTK   | Overstock.com, Inc.               | 26.49  | Internet Retail                 | Consumer Discretionary | 1.22                  |
| PATK   | Patrick Industries, Inc.          | 47.83  | Auto Components                 | Consumer Discretionary | 1.10                  |
| POOL   | Pool Corporation                  | 331.63 | Distributors                    | Consumer Discretionary | 13.37                 |
| PVH    | PVH Corp.                         | 54.41  | Textiles Apparel & Luxury Goods | Consumer Discretionary | 3.59                  |
| PZZA   | Papa John's International, Inc.   | 79     | Hotels Restaurants & Leisure    | Consumer Discretionary | 2.74                  |
| RUSHA  | Rush Enterprises, Inc. Class A    | 44.55  | Specialty Stores                | Consumer Discretionary | 2.58                  |
| RVLV   | Revolve Group, Inc Class A        | 24.59  | Internet Retail                 | Consumer Discretionary | 1.86                  |
| TNL    | Travel + Leisure Co.              | 40.61  | Hotels Restaurants & Leisure    | Consumer Discretionary | 3.43                  |
| TOL    | Toll Brothers, Inc.               | 43.66  | Household Durables              | Consumer Discretionary | 5.06                  |
| TPH    | Tri Pointe Homes, Inc.            | 16.18  | Household Durables              | Consumer Discretionary | 1.68                  |
| TSCO   | Tractor Supply Company            | 190.02 | Specialty Retail                | Consumer Discretionary | 21.31                 |
| TTCF   | Tattooed Chef Inc Class A         | 5.85   | Food: Major Diversified         | Consumer Discretionary | 0.47                  |
| UA     | Under Armour, Inc. Class C        | 7.31   | Textiles Apparel & Luxury Goods | Consumer Discretionary | 3.65                  |
| VSTO   | Vista Outdoor Inc                 | 27.08  | Leisure Products                | Consumer Discretionary | 1.60                  |
| W      | Wayfair, Inc. Class A             | 45.2   | Specialty Stores                | Consumer Discretionary | 4.90                  |
| WEBR   | Weber, Inc. Class A               | 6.4    | Electronics/Appliances          | Consumer Discretionary | 1.88                  |

Source: Worth Charting, Bloomberg, FactSet

# MONEY IN MOTION

## Sell List – By Sector – Page 3 of 9

| Ticker                  | Company                              | Price  | Sub Industry Group              | Sector                 | Market Cap (billions) |
|-------------------------|--------------------------------------|--------|---------------------------------|------------------------|-----------------------|
| WH                      | Wyndham Hotels & Resorts, Inc.       | 64.59  | Hotels Restaurants & Leisure    | Consumer Discretionary | 5.99                  |
| WHR                     | Whirlpool Corporation                | 145.06 | Household Durables              | Consumer Discretionary | 8.02                  |
| WOOF                    | Petco Health & Wellness Company      | 14.41  | Internet Retail                 | Consumer Discretionary | 3.84                  |
| WWW                     | Wolverine World Wide, Inc.           | 18.62  | Textiles Apparel & Luxury Goods | Consumer Discretionary | 1.52                  |
| <b>Consumer Staples</b> |                                      |        |                                 |                        |                       |
| BGS                     | B&G Foods, Inc.                      | 19     | Food Products                   | Consumer Staples       | 1.32                  |
| EL                      | Estee Lauder Companies Inc. Class A  | 239.38 | Personal Products               | Consumer Staples       | 85.96                 |
| ENR                     | Energizer Holdings, Inc.             | 28.12  | Household Products              | Consumer Staples       | 2.01                  |
| KHC                     | Kraft Heinz Company                  | 34.71  | Food Products                   | Consumer Staples       | 42.48                 |
| MKC                     | McCormick & Company, Incorporated    | 79.14  | Food Products                   | Consumer Staples       | 21.12                 |
| <b>Financials</b>       |                                      |        |                                 |                        |                       |
| ALLY                    | Ally Financial Inc                   | 32.48  | Regional Banks                  | Financials             | 10.16                 |
| APAM                    | Artisan Partners Asset Mgmt          | 31.84  | Investment Managers             | Financials             | 2.57                  |
| BNL                     | Broadstone Net Lease, Inc.           | 19.09  | Real Estate Investment Trusts   | Financials             | 3.28                  |
| BRK.B                   | Berkshire Hathaway Inc. Class B      | 274.81 | Diversified Financial Services  | Financials             | 620.28                |
| BRMK                    | Broadmark Realty Capital Inc         | 6.39   | Real Estate Investment Trusts   | Financials             | 0.84                  |
| BX                      | Blackstone Inc.                      | 92.18  | Investment Managers             | Financials             | 114.04                |
| CG                      | Carlyle Group Inc                    | 30.89  | Investment Managers             | Financials             | 11.27                 |
| CIM                     | Chimera Investment Corporation       | 7.85   | Real Estate Investment Trusts   | Financials             | 1.82                  |
| CME                     | CME Group Inc. Class A               | 191.56 | Capital Markets                 | Financials             | 68.41                 |
| CODI                    | Compass Diversified Holdings         | 19.05  | Investment Managers             | Financials             | 1.41                  |
| COF                     | Capital One Financial Corp           | 101.68 | Consumer Finance                | Financials             | 39.23                 |
| CTLP                    | Cantaloupe, Inc.                     | 4.22   | Regional Banks                  | Financials             | 0.31                  |
| CUBI                    | Customers Bancorp, Inc.              | 32.74  | Banks                           | Financials             | 1.09                  |
| CWK                     | Cushman & Wakefield Plc              | 14.06  | Real Estate Development         | Financials             | 3.21                  |
| DBRG                    | DigitalBridge Group, Inc. Class A    | 16.29  | Real Estate Investment Trusts   | Financials             | 3.51                  |
| DFS                     | Discover Financial Services          | 100.91 | Consumer Finance                | Financials             | 27.87                 |
| EVR                     | Evercore Inc. Class A                | 89.7   | Capital Markets                 | Financials             | 3.57                  |
| FAF                     | First American Financial Corporation | 50.56  | Insurance                       | Financials             | 5.33                  |
| FRC                     | First Republic Bank                  | 141.74 | Banks                           | Financials             | 25.85                 |
| KEY                     | KeyCorp                              | 17.7   | Banks                           | Financials             | 16.67                 |
| L                       | Loews Corporation                    | 53.96  | Insurance                       | Financials             | 13.26                 |
| LAND                    | Gladstone Land Corp.                 | 21     | Real Estate Investment Trusts   | Financials             | 0.71                  |

Source: Worth Charting, Bloomberg, FactSet



# MONEY IN MOTION

## Sell List – By Sector – Page 4 of 9

| Ticker             | Company                                | Price  | Sub Industry Group               | Sector      | Market Cap (billions) |
|--------------------|--|--------|----------------------------------|-------------|-----------------------|
| MC                 | Moelis & Co. Class A                   | 39.14  | Investment Banks/Brokers         | Financials  | 2.78                  |
| NAVI               | Navient Corp                           | 14.16  | Consumer Finance                 | Financials  | 2.03                  |
| NTRS               | Northern Trust Corporation             | 93.13  | Capital Markets                  | Financials  | 19.89                 |
| OMF                | OneMain Holdings, Inc.                 | 35.04  | Finance/Rental/Leasing           | Financials  | 4.40                  |
| ORI                | Old Republic International Corporation | 21.83  | Insurance                        | Financials  | 6.87                  |
| PACW               | PacWest Bancorp                        | 25.21  | Banks                            | Financials  | 3.05                  |
| PGRE               | Paramount Group, Inc.                  | 6.98   | Real Estate Investment Trusts    | Financials  | 1.69                  |
| PIPR               | Piper Sandler Companies                | 106.48 | Capital Markets                  | Financials  | 1.93                  |
| PRA                | ProAssurance Corporation               | 20.88  | Insurance                        | Financials  | 1.14                  |
| PRAA               | PRA Group, Inc.                        | 35.73  | Consumer Finance                 | Financials  | 1.39                  |
| PRU                | Prudential Financial, Inc.             | 91.92  | Insurance                        | Financials  | 35.18                 |
| RITM               | Rithm Capital Corp.                    | 8.98   | Real Estate Investment Trusts    | Financials  | 4.20                  |
| SBNY               | Signature Bank                         | 171.91 | Banks                            | Financials  | 10.84                 |
| SIVB               | SVB Financial Group                    | 362.42 | Banks                            | Financials  | 21.57                 |
| SPGI               | S&P Global, Inc.                       | 346.07 | Capital Markets                  | Financials  | 114.79                |
| SUI                | Sun Communities, Inc.                  | 152.43 | Real Estate Investment Trusts    | Financials  | 18.56                 |
| TBK                | Triumph Bancorp, Inc.                  | 61.16  | Banks                            | Financials  | 1.49                  |
| TROW               | T. Rowe Price Group                    | 110.13 | Capital Markets                  | Financials  | 25.89                 |
| TW                 | Tradeweb Markets, Inc. Class A         | 64.36  | Investment Banks/Brokers         | Financials  | 14.69                 |
| USB                | U.S. Bancorp                           | 45.87  | Banks                            | Financials  | 68.59                 |
| WAL                | Western Alliance Bancorp               | 71.7   | Regional Banks                   | Financials  | 7.92                  |
| WETF               | WisdomTree Investments, Inc.           | 4.97   | Capital Markets                  | Financials  | 0.74                  |
| <b>Health Care</b> |  |        |                                  |             |                       |
| ABT                | Abbott Laboratories                    | 104    | Health Care Equipment & Supplies | Health Care | 182.11                |
| ALGN               | Align Technology, Inc.                 | 249.02 | Health Care Equipment & Supplies | Health Care | 19.11                 |
| CRL                | Charles River Labs                     | 199.71 | Life Sciences Tools & Services   | Health Care | 10.13                 |
| CTLT               | Catalent Inc                           | 89.94  | Pharmaceuticals                  | Health Care | 15.98                 |
| DGX                | Quest Diagnostics Incorporated         | 124.73 | Health Care Providers & Services | Health Care | 14.65                 |
| HOLX               | Hologic, Inc.                          | 66.82  | Health Care Equipment & Supplies | Health Care | 16.65                 |
| HSIC               | Henry Schein, Inc.                     | 71.7   | Health Care Providers & Services | Health Care | 9.79                  |
| IDXX               | IDEXX Laboratories, Inc.               | 342.56 | Health Care Equipment & Supplies | Health Care | 28.31                 |
| ILMN               | Illumina, Inc.                         | 199.88 | Life Sciences Tools & Services   | Health Care | 31.06                 |
| ISRG               | Intuitive Surgical, Inc.               | 206.28 | Health Care Equipment & Supplies | Health Care | 72.20                 |
| LH                 | Laboratory Corporation of America      | 223.99 | Health Care Providers & Services | Health Care | 20.20                 |

Source: Worth Charting, Bloomberg, FactSet

# MONEY IN MOTION

## Sell List – By Sector – Page 5 of 9

| Ticker             | Company                            | Price  | Sub Industry Group                | Sector      | Market Cap (billions) |
|--------------------|------------------------------------|--------|-----------------------------------|-------------|-----------------------|
| MD                 | Pediatrix Medical Group, Inc.      | 17.58  | Health Care Providers & Services  | Health Care | 1.51                  |
| MRNA               | Moderna, Inc.                      | 137.74 | Biotechnology                     | Health Care | 49.83                 |
| NVST               | Envista Holdings Corp.             | 34.3   | Health Care Equipment & Supplies  | Health Care | 5.69                  |
| OMCL               | Omnicecll, Inc.                    | 95.27  | Health Care Equipment & Supplies  | Health Care | 4.13                  |
| PBH                | Prestige Consumer Healthcare Inc   | 51.5   | Pharmaceuticals                   | Health Care | 2.59                  |
| PKI                | PerkinElmer, Inc.                  | 130.14 | Life Sciences Tools & Services    | Health Care | 16.43                 |
| STE                | STERIS Plc                         | 193.72 | Health Care Equipment & Supplies  | Health Care | 19.02                 |
| TECH               | Bio-Techne Corporation             | 307.59 | Life Sciences Tools & Services    | Health Care | 11.95                 |
| VTRS               | Viatrix, Inc.                      | 9.3    | Pharmaceuticals                   | Health Care | 11.22                 |
| WAT                | Waters Corporation                 | 283.93 | Life Sciences Tools & Services    | Health Care | 17.33                 |
| WST                | West Pharmaceutical Services, Inc. | 268.06 | Life Sciences Tools & Services    | Health Care | 19.89                 |
| ZTS                | Zoetis, Inc. Class A               | 157.3  | Pharmaceuticals                   | Health Care | 73.62                 |
| ADPT               | Adaptive Biotechnologies Corp.     | 7.63   | Biotechnology                     | Healthcare  | 1.10                  |
| ALBO               | Albireo Pharma, Inc.               | 17.43  | Pharmaceuticals: Major            | Healthcare  | 0.34                  |
| ALEC               | Alector, Inc.                      | 9.23   | Biotechnology                     | Healthcare  | 0.77                  |
| BVS                | Bioventus, Inc. Class A            | 7.34   | Medical Specialties               | Healthcare  | 0.57                  |
| GLUE               | Monte Rosa Therapeutics, Inc.      | 7.17   | Biotechnology                     | Healthcare  | 0.35                  |
| HLTH               | Cue Health Inc.                    | 3.27   | Medical Specialties               | Healthcare  | 0.49                  |
| KURA               | Kura Oncology, Inc.                | 13.2   | Pharmaceuticals: Major            | Healthcare  | 0.86                  |
| MDXG               | MiMedx Group, Inc.                 | 3.26   | Biotechnology                     | Healthcare  | 0.37                  |
| RARE               | Ultragenyx Pharmaceutical, Inc.    | 46.03  | Pharmaceuticals: Major            | Healthcare  | 3.20                  |
| SGRY               | Surgery Partners, Inc.             | 27.51  | Hospital/Nursing Management       | Healthcare  | 2.44                  |
| SKIN               | Beauty Health Company Class A      | 11.98  | Medical Specialties               | Healthcare  | 1.83                  |
| ZNTL               | Zentalis Pharmaceuticals, Inc.     | 23.86  | Biotechnology                     | Healthcare  | 1.29                  |
| <b>Industrials</b> |                                    |        |                                   |             |                       |
| ALLE               | Allegion Public Limited Company    | 89.69  | Building Products                 | Industrials | 8.07                  |
| APG                | APi Group Corporation              | 14.94  | Engineering & Construction        | Industrials | 3.61                  |
| ATKR               | Atkore Inc                         | 79.5   | Electrical Products               | Industrials | 3.29                  |
| AYI                | Acuity Brands, Inc.                | 155    | Electrical Equipment              | Industrials | 5.34                  |
| AZEK               | AZEK Co., Inc. Class A             | 17.96  | Building Products                 | Industrials | 2.77                  |
| B                  | Barnes Group Inc.                  | 30.59  | Machinery                         | Industrials | 1.57                  |
| BCO                | Brink's Company                    | 53.25  | Commercial Services & Supplies    | Industrials | 2.51                  |
| BERY               | Berry Global Group Inc             | 51.82  | Miscellaneous Manufacturing       | Industrials | 6.58                  |
| BHIL               | Benson Hill, Inc.                  | 2.86   | Miscellaneous Commercial Services | Industrials | 0.58                  |

Source: Worth Charting, Bloomberg, FactSet

# MONEY IN MOTION

## Sell List – By Sector – Page 6 of 9

| Ticker | Company                              | Price  | Sub Industry Group                 | Sector      | Market Cap (billions) |
|--------|--------------------------------------|--------|------------------------------------|-------------|-----------------------|
| BLDE   | Blade Air Mobility, Inc. Class A     | 4.79   | Airlines                           | Industrials | 0.32                  |
| BRC    | Brady Corporation Class A            | 43.23  | Commercial Services & Supplies     | Industrials | 2.19                  |
| CAR    | Avis Budget Group, Inc.              | 147.3  | Road & Rail                        | Industrials | 7.42                  |
| CLVT   | Clarivate PLC                        | 10.57  | Miscellaneous Commercial Services  | Industrials | 7.09                  |
| CMRE   | Costamare Inc.                       | 10.33  | Marine Shipping                    | Industrials | 1.25                  |
| CNDT   | Conduent, Inc.                       | 3.73   | Miscellaneous Commercial Services  | Industrials | 0.81                  |
| CSTM   | Constellium SE Class A               | 11.45  | Miscellaneous Commercial Services  | Industrials | 1.73                  |
| DOV    | Dover Corporation                    | 120.91 | Machinery                          | Industrials | 17.90                 |
| ECVT   | Ecovyst Inc                          | 8.42   | Chemicals: Specialty               | Industrials | 1.23                  |
| EMR    | Emerson Electric Co.                 | 78.21  | Electrical Equipment               | Industrials | 47.11                 |
| EXPD   | Expeditors International             | 92.81  | Air Freight & Logistics            | Industrials | 15.27                 |
| FAST   | Fastenal Company                     | 47.36  | Trading Companies & Distributors   | Industrials | 27.85                 |
| FBHS   | Fortune Brands Home & Security, Inc. | 59.98  | Building Products                  | Industrials | 7.82                  |
| FLS    | Flowserve Corporation                | 27.17  | Machinery                          | Industrials | 3.61                  |
| GNRC   | Generac Holdings Inc.                | 200.17 | Electrical Equipment               | Industrials | 12.68                 |
| GVA    | Granite Construction Incorporated    | 27.87  | Construction & Engineering         | Industrials | 1.27                  |
| HON    | Honeywell International Inc.         | 177.35 | Industrial Conglomerates           | Industrials | 120.45                |
| IAA    | IAA, Inc.                            | 33.72  | Commercial Services & Supplies     | Industrials | 4.47                  |
| J      | Jacobs Solutions Inc.                | 117.27 | Professional Services              | Industrials | 15.39                 |
| KFY    | Korn Ferry                           | 49.28  | Professional Services              | Industrials | 2.64                  |
| KMT    | Kennametal Inc.                      | 21.58  | Machinery                          | Industrials | 1.82                  |
| KNX    | Knight-Swift Transportation          | 48.02  | Road & Rail                        | Industrials | 7.93                  |
| LICY   | Li-Cycle Holdings Corp.              | 6.03   | Environmental Services             | Industrials | 1.08                  |
| LSTR   | Landstar System, Inc.                | 141.01 | Road & Rail                        | Industrials | 5.33                  |
| LUV    | Southwest Airlines Co.               | 34.73  | Airlines                           | Industrials | 21.35                 |
| MATX   | Matson, Inc.                         | 69.39  | Marine                             | Industrials | 2.66                  |
| OSK    | Oshkosh Corp                         | 77.59  | Machinery                          | Industrials | 5.19                  |
| OTIS   | Otis Worldwide Corporation           | 67.8   | Machinery                          | Industrials | 28.85                 |
| PNR    | Pentair plc                          | 42.84  | Machinery                          | Industrials | 7.15                  |
| RHI    | Robert Half International Inc.       | 76.71  | Professional Services              | Industrials | 8.56                  |
| SB     | Safe Bulkers, Inc.                   | 3.05   | Marine Shipping                    | Industrials | 0.36                  |
| SITE   | SiteOne Landscape Supply, Inc.       | 113.67 | Trucks/Construction/Farm Machinery | Industrials | 5.13                  |
| SLDP   | Solid Power, Inc. Class A            | 6.12   | Electrical Products                | Industrials | 1.09                  |
| SNCY   | Sun Country Airlines Holdings, Inc.  | 17.02  | Airlines                           | Industrials | 0.99                  |
| TRN    | Trinity Industries, Inc.             | 22.92  | Machinery                          | Industrials | 1.91                  |

Source: Worth Charting, Bloomberg, FactSet

# MONEY IN MOTION

## Sell List – By Sector – Page 7 of 9

| Ticker                        | Company                                | Price  | Sub Industry Group                            | Sector                 | Market Cap (billions) |
|-------------------------------|--|--------|---|------------------------|-----------------------|
| UNVR                          | Univar Solutions Inc.                  | 23.69  | Trading Companies & Distributors              | Industrials            | 4.07                  |
| WLK                           | Westlake Corporation                   | 90.85  | Chemicals: Specialty                          | Industrials            | 11.83                 |
| XPO                           | XPO Logistics, Inc.                    | 47.17  | Road & Rail                                   | Industrials            | 5.47                  |
| ZWS                           | Zurn Elkay Water Solutions Corporation | 26.08  | Industrial Machinery                          | Industrials            | 4.74                  |
| <b>Information Technology</b> |  |        |   |                        |                       |
| ACHR                          | Archer Aviation Inc Class A            | 3.01   | Aerospace & Defense                           | Information Technology | 0.73                  |
| ACN                           | Accenture Plc Class A                  | 272.68 | IT Services                                   | Information Technology | 173.90                |
| AFRM                          | Affirm Holdings, Inc. Class A          | 22.3   | Internet Software/Services                    | Information Technology | 6.51                  |
| AKAM                          | Akamai Technologies, Inc.              | 87.16  | IT Services                                   | Information Technology | 14.10                 |
| ALTR                          | Altair Engineering Inc. Class A        | 47.06  | Packaged Software                             | Information Technology | 3.75                  |
| AMBA                          | Ambarella, Inc.                        | 64.93  | Semiconductors                                | Information Technology | 2.49                  |
| AMD                           | Advanced Micro Devices, Inc.           | 76.51  | Semiconductors & Semiconductor Equipment      | Information Technology | 124.32                |
| AMPL                          | Amplitude Inc Class A                  | 15.77  | Packaged Software                             | Information Technology | 1.82                  |
| APPS                          | Digital Turbine, Inc.                  | 16.48  | Software                                      | Information Technology | 1.68                  |
| AVID                          | Avid Technology, Inc.                  | 24.05  | Technology Hardware Storage & Peripherals     | Information Technology | 1.06                  |
| BASE                          | Couchbase, Inc.                        | 14.55  | Packaged Software                             | Information Technology | 0.67                  |
| BLND                          | Blend Labs, Inc. Class A               | 2.73   | Information Technology Services               | Information Technology | 0.61                  |
| BMBL                          | Bumble, Inc. Class A                   | 23.56  | Packaged Software                             | Information Technology | 4.41                  |
| CGNX                          | Cognex Corporation                     | 42.3   | Electronic Equipment Instruments & Components | Information Technology | 7.24                  |
| CRM                           | Salesforce, Inc.                       | 151.51 | Software                                      | Information Technology | 152.69                |
| DASH                          | DoorDash, Inc. Class A                 | 59.13  | Internet Software/Services                    | Information Technology | 22.85                 |
| DDOG                          | Datadog Inc Class A                    | 91.25  | Packaged Software                             | Information Technology | 29.60                 |
| DH                            | Definitive Healthcare Corp. Class A    | 18.27  | Packaged Software                             | Information Technology | 2.70                  |
| DNB                           | Dun & Bradstreet Holdings Inc          | 14.31  | Packaged Software                             | Information Technology | 6.04                  |
| DOCS                          | Doximity, Inc. Class A                 | 31.45  | Internet Software/Services                    | Information Technology | 6.05                  |
| ENTG                          | Entegris, Inc.                         | 92.8   | Semiconductors                                | Information Technology | 14.07                 |
| EVLV                          | Evolv Technologies Holdings, Inc.      | 2.28   | Electronic Equipment/Instruments              | Information Technology | 0.32                  |
| EVTC                          | EVERTEC, Inc.                          | 33.03  | IT Services                                   | Information Technology | 2.21                  |
| FIVN                          | Five9, Inc.                            | 81.78  | Information Technology Services               | Information Technology | 5.82                  |
| FLT                           | FLEETCOR Technologies, Inc.            | 202.56 | IT Services                                   | Information Technology | 15.25                 |
| GWRE                          | Guidewire Software, Inc.               | 64.72  | Information Technology Services               | Information Technology | 5.28                  |
| HUBS                          | HubSpot, Inc.                          | 291.57 | Information Technology Services               | Information Technology | 14.02                 |
| INFN                          | Infinera Corporation                   | 4.94   | Telecommunications Equipment                  | Information Technology | 1.07                  |
| JAMF                          | Jamf Holding Corp                      | 22.84  | Packaged Software                             | Information Technology | 2.76                  |

Source: Worth Charting, Bloomberg, FactSet

# MONEY IN MOTION

## Sell List – By Sector – Page 8 of 9

| Ticker | Company                                   | Price  | Sub Industry Group                            | Sector                 | Market Cap (billions) |
|--------|---|--------|---|------------------------|-----------------------|
| LRCX   | Lam Research Corporation                  | 409.22 | Semiconductors & Semiconductor Equipment      | Information Technology | 56.33                 |
| MDB    | MongoDB, Inc. Class A                     | 220.58 | Packaged Software                             | Information Technology | 15.19                 |
| MRVL   | Marvell Technology, Inc.                  | 46.35  | Semiconductors                                | Information Technology | 39.50                 |
| MSFT   | Microsoft Corporation                     | 244.74 | Software                                      | Information Technology | 1827.71               |
| MSTR   | MicroStrategy Incorporated Class A        | 206.34 | Internet Software/Services                    | Information Technology | 2.32                  |
| MU     | Micron Technology, Inc.                   | 52.85  | Semiconductors & Semiconductor Equipment      | Information Technology | 57.91                 |
| MXL    | MaxLinear, Inc.                           | 34.53  | Semiconductors & Semiconductor Equipment      | Information Technology | 2.74                  |
| NLOK   | NortonLifeLock Inc.                       | 21.26  | Software                                      | Information Technology | 14.24                 |
| NOW    | ServiceNow, Inc.                          | 425.8  | Software                                      | Information Technology | 86.07                 |
| NSIT   | Insight Enterprises, Inc.                 | 84.54  | Electronic Equipment Instruments & Components | Information Technology | 2.99                  |
| OLED   | Universal Display Corporation             | 101.69 | Semiconductors & Semiconductor Equipment      | Information Technology | 4.92                  |
| ONTO   | Onto Innovation, Inc.                     | 68.3   | Semiconductors & Semiconductor Equipment      | Information Technology | 3.42                  |
| PATH   | UiPath, Inc. Class A                      | 14.03  | Packaged Software                             | Information Technology | 7.76                  |
| PD     | PagerDuty, Inc.                           | 23.56  | Packaged Software                             | Information Technology | 2.15                  |
| PLTR   | Palantir Technologies Inc. Class A        | 7.78   | Packaged Software                             | Information Technology | 16.20                 |
| POWW   | AMMO Inc                                  | 3.47   | Aerospace & Defense                           | Information Technology | 0.41                  |
| QTWO   | Q2 Holdings, Inc.                         | 37.68  | Information Technology Services               | Information Technology | 2.12                  |
| SNX    | TD SYNNEX Corporation                     | 90.09  | Electronic Equipment Instruments & Components | Information Technology | 8.78                  |
| SPOT   | Spotify Technology SA                     | 100.34 | Internet Software/Services                    | Information Technology | 19.31                 |
| SPR    | Spirit AeroSystems Holdings, Inc. Class A | 25.8   | Aerospace & Defense                           | Information Technology | 2.66                  |
| SQ     | Block, Inc. Class A                       | 64.89  | Information Technology Services               | Information Technology | 37.78                 |
| SQSP   | Squarespace, Inc. Class A                 | 20.98  | Information Technology Services               | Information Technology | 3.08                  |
| ST     | Sensata Technologies Holding PLC          | 40.05  | Electronic Equipment/Instruments              | Information Technology | 6.36                  |
| SUMO   | Sumo Logic, Inc.                          | 8.16   | Packaged Software                             | Information Technology | 0.96                  |
| SYNA   | Synaptics Incorporated                    | 107.93 | Semiconductors & Semiconductor Equipment      | Information Technology | 4.26                  |
| TENB   | Tenable Holdings, Inc.                    | 37.21  | Packaged Software                             | Information Technology | 4.30                  |
| U      | Unity Software, Inc.                      | 35.54  | Packaged Software                             | Information Technology | 11.08                 |
| UCTT   | Ultra Clean Holdings, Inc.                | 27.56  | Semiconductors & Semiconductor Equipment      | Information Technology | 1.25                  |
| UPWK   | Upwork, Inc.                              | 16     | Packaged Software                             | Information Technology | 2.00                  |
| V      | Visa Inc. Class A                         | 193.3  | IT Services                                   | Information Technology | 400.17                |
| YOU    | Clear Secure, Inc. Class A                | 23.26  | Packaged Software                             | Information Technology | 3.59                  |
| Z      | Zillow Group, Inc. Class C                | 34.16  | Information Technology Services               | Information Technology | 7.95                  |
| ZBRA   | Zebra Technologies Corporation Class A    | 288.52 | Electronic Equipment Instruments & Components | Information Technology | 15.09                 |

Source: Worth Charting, Bloomberg, FactSet

# MONEY IN MOTION

## Sell List – By Sector – Page 9 of 9

| Ticker             | Company                             | Price  | Sub Industry Group                           | Sector      | Market Cap (billions) |
|--------------------|-------------------------------------|--------|--|-------------|-----------------------|
| <b>Materials</b>   |                                     |        |  |             |                       |
| AA                 | Alcoa Corporation                   | 42.46  | Metals & Mining                              | Materials   | 8.08                  |
| ASIX               | Advansix, Inc.                      | 33.68  | Chemicals                                    | Materials   | 0.98                  |
| AVNT               | Avient Corporation                  | 36.78  | Chemicals                                    | Materials   | 3.43                  |
| CLF                | Cleveland-Cliffs Inc                | 15     | Metals & Mining                              | Materials   | 7.82                  |
| DD                 | DuPont de Nemours, Inc.             | 53.98  | Chemicals                                    | Materials   | 27.84                 |
| EXP                | Eagle Materials Inc.                | 111.43 | Construction Materials                       | Materials   | 4.35                  |
| FUL                | H.B. Fuller Company                 | 59.8   | Chemicals                                    | Materials   | 3.28                  |
| LPX                | Louisiana-Pacific Corporation       | 52.52  | Paper & Forest Products                      | Materials   | 4.02                  |
| SHW                | Sherwin-Williams Company            | 221.56 | Chemicals                                    | Materials   | 57.83                 |
| SXT                | Sensient Technologies Corporation   | 74.3   | Chemicals                                    | Materials   | 3.18                  |
| VVV                | Valvoline, Inc.                     | 27.26  | Chemicals                                    | Materials   | 4.89                  |
| <b>Real Estate</b> |                                     |        |  |             |                       |
| AHH                | Armada Hoffler Properties, Inc.     | 12.59  | Equity Real Estate Investment Trusts (REITs) | Real Estate | 1.12                  |
| AIRC               | Apartment Income REIT Corp          | 41.21  | Equity Real Estate Investment Trusts (REITs) | Real Estate | 6.28                  |
| AKR                | Acadia Realty Trust                 | 15.33  | Equity Real Estate Investment Trusts (REITs) | Real Estate | 1.51                  |
| ALEX               | Alexander & Baldwin, Inc.           | 17.5   | Equity Real Estate Investment Trusts (REITs) | Real Estate | 1.29                  |
| CPT                | Camden Property Trust               | 129    | Equity Real Estate Investment Trusts (REITs) | Real Estate | 13.62                 |
| EGP                | EastGroup Properties, Inc.          | 156.46 | Equity Real Estate Investment Trusts (REITs) | Real Estate | 6.83                  |
| EQIX               | Equinix, Inc.                       | 624.75 | Equity Real Estate Investment Trusts (REITs) | Real Estate | 56.87                 |
| GNL                | Global Net Lease Inc                | 13.27  | Equity Real Estate Investment Trusts (REITs) | Real Estate | 1.37                  |
| HOUS               | Anywhere Real Estate Inc.           | 9.02   | Real Estate Management & Development         | Real Estate | 1.05                  |
| JLL                | Jones Lang LaSalle Incorporated     | 162.73 | Real Estate Management & Development         | Real Estate | 7.89                  |
| MAA                | Mid-America Apartment Communities   | 165.95 | Equity Real Estate Investment Trusts (REITs) | Real Estate | 19.55                 |
| MAC                | Macerich Company                    | 9.08   | Equity Real Estate Investment Trusts (REITs) | Real Estate | 3.85                  |
| NSA                | National Storage Affiliates Trust   | 46.72  | Equity Real Estate Investment Trusts (REITs) | Real Estate | 5.97                  |
| PCH                | PotlatchDeltic Corporation          | 43.54  | Equity Real Estate Investment Trusts (REITs) | Real Estate | 3.59                  |
| REG                | Regency Centers Corporation         | 58.99  | Equity Real Estate Investment Trusts (REITs) | Real Estate | 10.10                 |
| REXR               | Rexford Industrial Realty, Inc.     | 58.51  | Equity Real Estate Investment Trusts (REITs) | Real Estate | 9.92                  |
| RPT                | RPT Realty                          | 9.28   | Equity Real Estate Investment Trusts (REITs) | Real Estate | 0.78                  |
| SAFE               | Safehold Inc.                       | 36.09  | Equity Real Estate Investment Trusts (REITs) | Real Estate | 2.26                  |
| SITC               | SITE Centers Corp.                  | 12.83  | Equity Real Estate Investment Trusts (REITs) | Real Estate | 2.72                  |
| SKT                | Tanger Factory Outlet Centers, Inc. | 15.2   | Equity Real Estate Investment Trusts (REITs) | Real Estate | 1.59                  |
| UDR                | UDR, Inc.                           | 44.64  | Equity Real Estate Investment Trusts (REITs) | Real Estate | 22.27                 |

Source: Worth Charting, Bloomberg, FactSet



Source: Worth Charting, Bloomberg, FactSet

Worth Charting LLC (“Worth”) is a provider of financial publications of general circulation offering impersonal advice, not tailored to individual needs of a specific client or group. Reports are distributed for general informational and educational purposes only and is not intended to constitute legal, tax, accounting or investment advice. Worth is an independent research company and is not a registered investment adviser and is not acting as a broker dealer under any federal or state securities laws. Worth does not act as a fiduciary or an investment adviser. Comments or statements made herein do not constitute investment advice. Views, opinions and judgments expressed are of Worth.

The analyses and observations contained in this report (the “Report”) are statements of opinion as of the date they are expressed and not statements of fact or recommendations to purchase, hold, or sell any securities or make any investment decisions. Recipients of the Report should not rely on any of it in making any investment decision. You should obtain independent investment advice before buying or selling any security discussed in the Report. [Worth and/or its employees may hold positions in or purchase or sell such securities contrary to views expressed in the Report.] Worth does not guarantee the accuracy, adequacy, completeness or availability of any information contained herein and is not responsible for any errors or omissions or for results obtained from the use of such information. The Report does not take into account the investment objectives, financial situation, restrictions, particular needs or financial, legal, or tax situation of any particular person and should not be viewed as addressing the recipients’ particular investment needs. Opinions and analyses offered in the Report does not address the suitability of any security. The Report is not an offer or solicitation for the purchase or sale of any security, investment, or other product and should not be construed as such. Investing in securities and other financial products entails certain risks, including the possible loss of the entire principal amount invested. You should obtain advice from your tax, financial, legal, and other advisors and only make investment decisions on the basis of your own objectives, experience, and resources.

Information contained herein is current as of the date appearing herein and has been obtained from sources believed to be reliable, but accuracy and completeness are not guaranteed and should not be relied upon as such. Worth does not perform an audit and undertakes no duty of due diligence or independent verification of any information it receives. Worth has no duty to update the information contained herein, and the opinions, estimates, projections, assessments and other views expressed in the Report may change without notice due to many factors including but not limited to: fluctuating market conditions and economic factors. The Report is based on a number of assumptions. Worth makes no representations as to the reasonableness of such assumptions or the likelihood that such assumptions will coincide with actual events and this information should not be relied upon for that purpose. Changes in such assumptions could produce materially different results. Past performance is not a guarantee or indication of future results, and no representation or warranty, express or implied, is made regarding future performance of any security mentioned in this publication. Worth accepts no liability for any loss (whether direct, indirect or consequential) occasioned to any person acting or refraining from action as a result of any material contained in or derived from this publication, except to the extent (but only to the extent) that such liability may not be waived, modified or limited under applicable law.

All materials are disseminated and available to all subscribers simultaneously through electronic publication via email and to our internal client website. The Report is licensed for use by authorized subscribers, and may not be reproduced, distributed, forwarded, posted, published, transmitted, uploaded or otherwise made available to others for commercial purposes without written authorization from Worth.

Source: Worth Charting, Bloomberg, FactSet